



PRODUCT: JL Wrangler Front Pro Hoop

REV: A | 11-10-2020 | R75000

**READ INSTRUCTIONS IN FULL BEFORE INSTALLATION.
QUESTIONS? CALL 916-760-4575 M-F 7:00 AM – 5:00 PM PST**

The ARS experience includes the ease of installation of our products. We design for most contingencies, but installation may be different based on different Jeep condition, configuration and/or year.

We are continually trying to improve our products and instructions – please help us by providing feedback and pictures if you find any part of the instructions that do not match your Jeep or are not easily understandable.

If you have any difficulties at all, please give us a call. Thank you and enjoy your ARS Products!

IMPORTANT NOTE: We use Stainless Steel Hardware where possible. Therefore, a tube of Silver Anti-seize is provided and should be used on all bolts—only a small amount is needed.

WARRANTY INFORMATION: This article is sold without warranty expressed or implied. No warranty or representation is made as to this products ability to protect the user from injury or death. The user assumes that risk. The effectiveness, warranty and longevity of this equipment are directly related to the way it is INSTALLED, USED and/or MAINTAINED. THE USER ASSUMES ALL RISK. By purchasing this product and opening the packaging, purchasers expressly acknowledge, understand and agree that they take, select and purchase these ARS products from Armored Works, LLC, its affiliates and distributors and agents as is and with all faults. The entire risk as to the quality and performance of these ARS products is with the purchaser. Working on your vehicle can be a dangerous activity. If you are unsure of what you are doing, please leave mechanical or safety critical work to a skilled mechanic. We take no responsibility for the incorrect use and/or installation of ARS products.

Section 1: Tools & Notes on Installation



Tools Required: This list is the recommended tools for ease of installation. Other versions of the same tool can be used. For example, Allen Wrenches instead of Allen Drive Sockets.



Socket Wrench

5mm Allen Wrench
7/32" Allen Wrench



T40 Torx Socket

1/2" Socket 9/16" Socket
1/2" Wrench 11/16" Wrench



Drill

13/32" Bit 17/32" Bit
5/16 Bit



Dremel & Cut-Off Wheel

Cutters



Blue Lock Tight

Clamps



HOW TO USE THIS GUIDE: The installation guide contains ALL steps for installation. Please read and follow the instructions in order of each page top to bottom and left to right.

Jeep Model: Instructions may apply to multiple Jeep models but are labeled separately where appropriate (i.e. TJ vs. LJ).

Options: Because of the number of component options we offer, these instructions may contain steps that will not match your configuration. You can skip these steps.

Images: Pictures are provided, and parts are labeled throughout the instructions. Each text box contains guidance based on the pictures next to it. The text will refer to alphabetical labels (A, B, etc.) found in the images.

Installation Notes: Terms may be used in the body of the instructions that you may not be familiar with, if you have any questions feel free to contact us at the number below, or email techhelp@metalcloak.com

QUESTIONS: Any questions or comments about the instructions? Call us at 916-760-4575 M-F 7:00 AM – 5:00 PM PST.

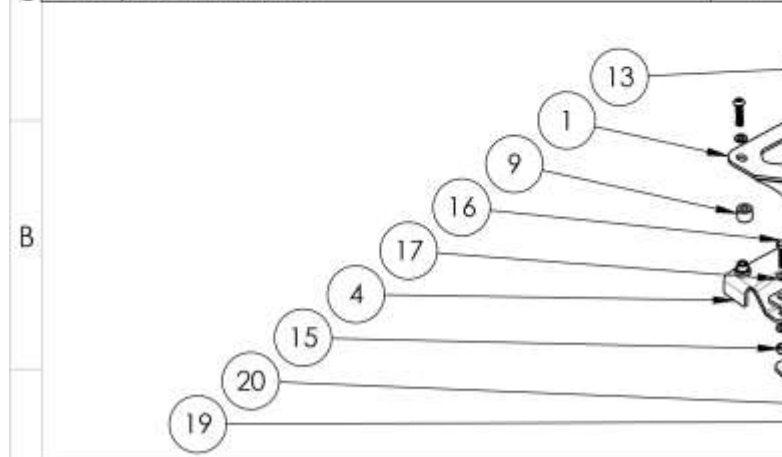
Section 2: Product Components



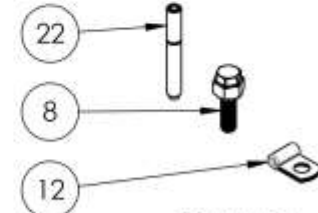
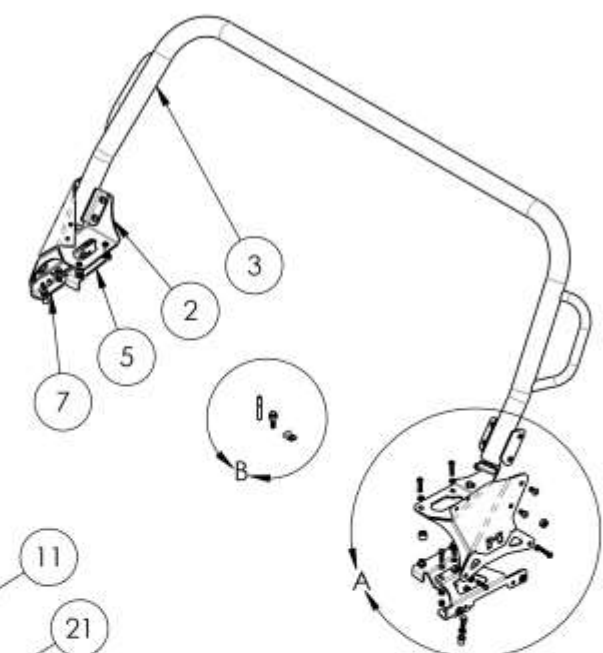
DC-0001 REV A

SHEET 1 OF 1

ITEM	PART NUMBER/DESCRIPTION	QTY.
1	WM-7040 WELDMENT, FRONT MOUNTING BASE, JL	1
2	WM-7040-P WELDMENT, FRONT MOUNTING BASE, JL	1
3	WM-7041 WELDMENT, FRONT HOOP, JL	1
4	WM-7043 WELDMENT, FRONT INNER BASE SUPPORT UPPER, JL	1
5	WM-7043-P WELDMENT, FRONT INNER BASE SUPPORT UPPER, JL	1
6	WM-7044 WELDMENT, FRONT INNER BASE SUPPORT LOWER, JL	1
7	WM-7044-P WELDMENT, FRONT INNER BASE SUPPORT LOWER, JL	1
8	8999 INSTALLATION TOOL, 0.38-16 RIVET NUT	1
9	CS-0158 BILLET, FRONT INNER SPACER, JL	4
10	CS-0170 BILLET, FRONT HOOP BASE OUTER SPACER, JL	4
11	FA-2001 HOLE PLUG, 2.00 X 0.50H PLASTIC BLACK	2
12	FA-2020 CLAMP, 0.188X1.375 VINYL LOOP, ZINC	1
13	FM-08278 SBHCS, M8-1.25 X 35L SS 18-8 PLAIN	8
14	FM-08269 WASHER, 8.4ID X 15.0OD X 1.6TH SS 18-8 PLAIN	8
15	FS-05047 NYLOCK NUT, 0.31-18 X 0.34H STL GF ZINC	6
16	FS-05194 HHCS, 0.31-18 X 1.25L STL G5 ZINC	6
17	FS-05242 WASHER, 0.33ID X 0.63OD X 0.05TH STL ZINC	12
18	FS-06031 HHCS, 0.38-16 X 1.0L STL G5 ZINC	2
19	FS-06033 RIVET NUT, 0.38-16 X 0.15GRIP STL G5 GOLD ZINC	2
20	FS-06231 LOCK WASHER SPLIT, 0.39ID X 0.68OD X 0.10TH STL ZINC	2
21	FS-06258 SBHCS, 0.38-24 X 0.75L STL 18-8 SS	8
22	SP-0105 ANTI-SEIZE TUBE	1



DETAIL A
SCALE 1 : 8



DETAIL B
SCALE 1 : 4

THE INFORMATION CONTAINED ON THIS DRAWING IS THE EXCLUSIVE PROPERTY OF ARMORED WORKS, LLC. UNAUTHORIZED REPRODUCTION IS PROHIBITED.
DO NOT SCALE DRAWING



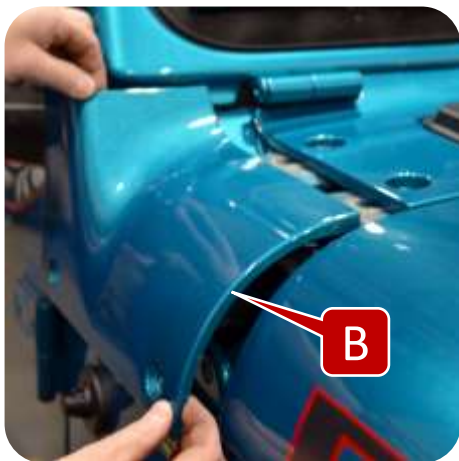
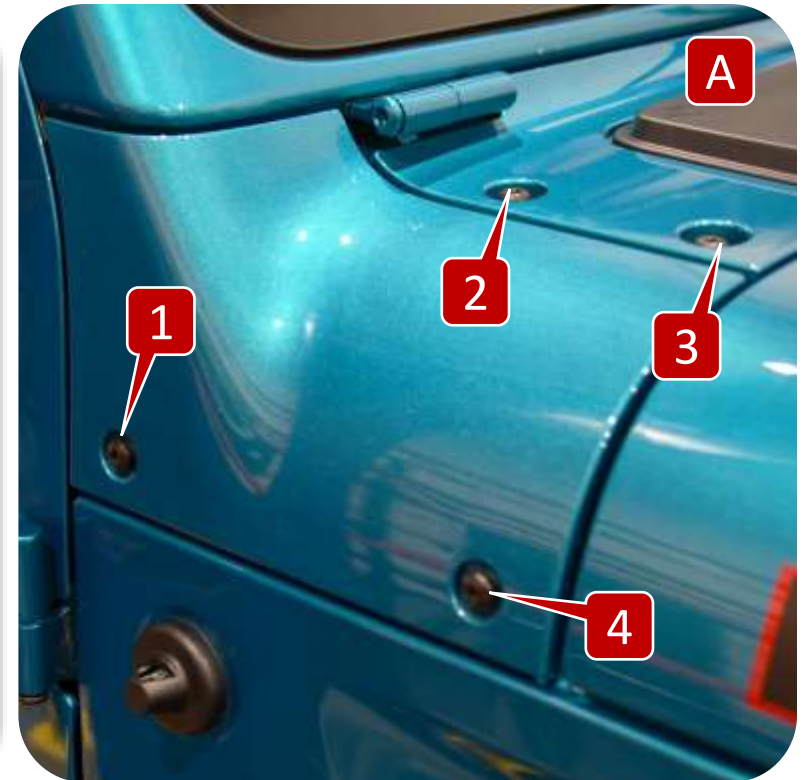
PART NUMBER/DESCRIPTION
R75000 PRO FRONT HOOP WITH HANDLES, JL

Section 3: Installation Instructions



Step 1: Front Hoop Bracket Installation

- A. Using a T40 torx wrench remove the four stock torx bolts from the side panel and hood cowl.
- B. Remove the side panel.
- C. Using cutters remove the plastic tab underneath the hood cowl.
- D. Using a dremel enlarge the T40 torx holes on the hood cowl making sure they are large enough to fit the upper bracket's 1/2" standoffs. Do NOT use a drill to open the holes.



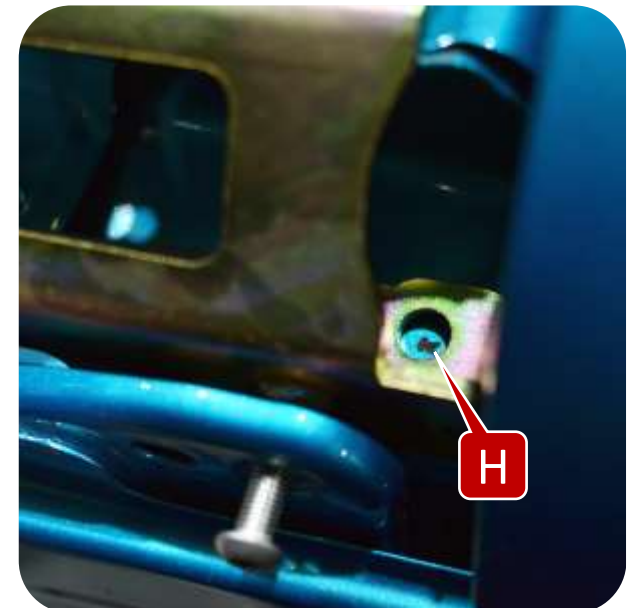
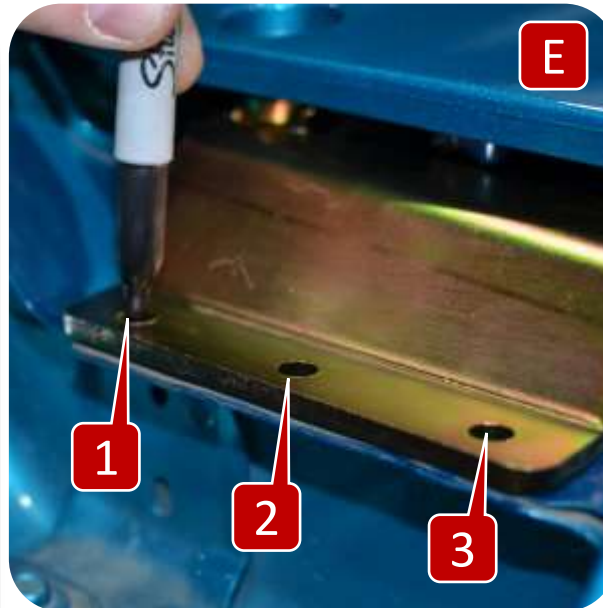
Section 3: Installation Instructions



Step 1: Front Hoop Bracket Installation

- E. Mark the three upper bracket holes.
- F. Drill the two stock bolt holes to $13/32$ ".
- G. Install the side bracket and hold into place with the provided bolts.
- H. Mark the side bracket hole in preparation for drilling.
- I. Remove both the upper and side brackets.

Note: *The side bracket bolt hole that requires drilling on the passenger side should align with a pre-existing hole that will need to be expanded to $17/32$ ".*



Section 3: Installation Instructions



Step 1: Front Hoop Bracket Installation

- J. Drill a pilot hole on the three upper bracket marked locations and step up to a 5/16 drill bit.
- K. Drill a pilot hole on the one side bracket marked location and step up to a 17/32 drill bit. We recommend opening the hood to gain better access to the marked location.
- L. Paint any exposed metal to prevent rusting.
- M. Using the provided installation tool install the rivet nut into the 17/32 hole. Use a 9/16 socket and 11/16 wrench for the installation tool.



Section 3: Installation Instructions



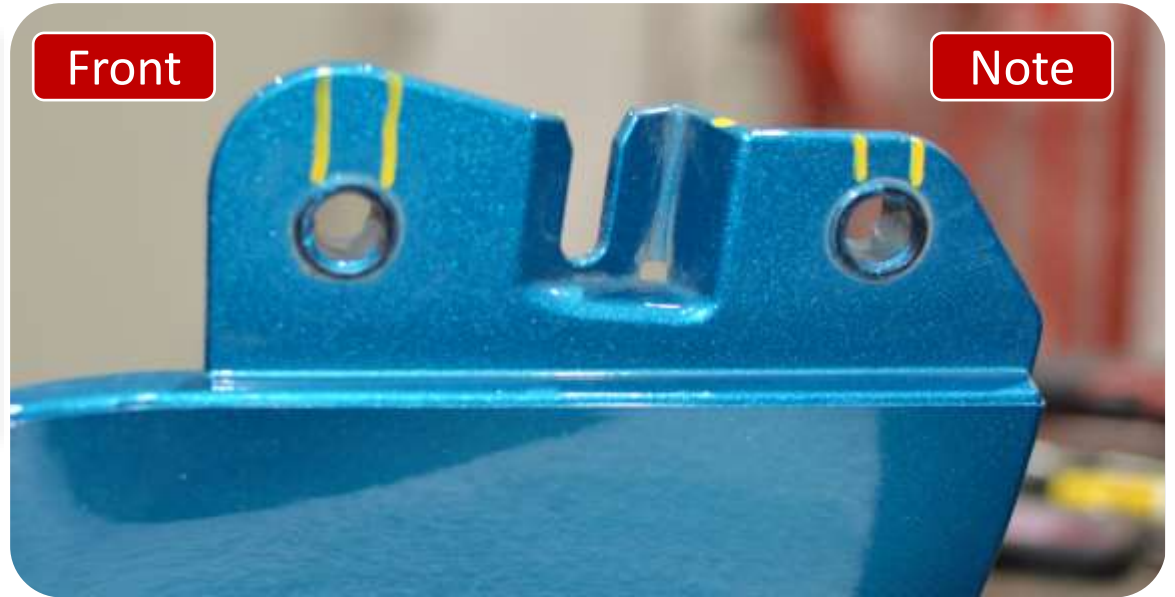
Step 1: Front Hoop Bracket Installation

N. Using a clamp hold the side panel securely to help prevent movement when cutting.

Note: *The marked locations are the parts that will need to be removed from the side panel.*

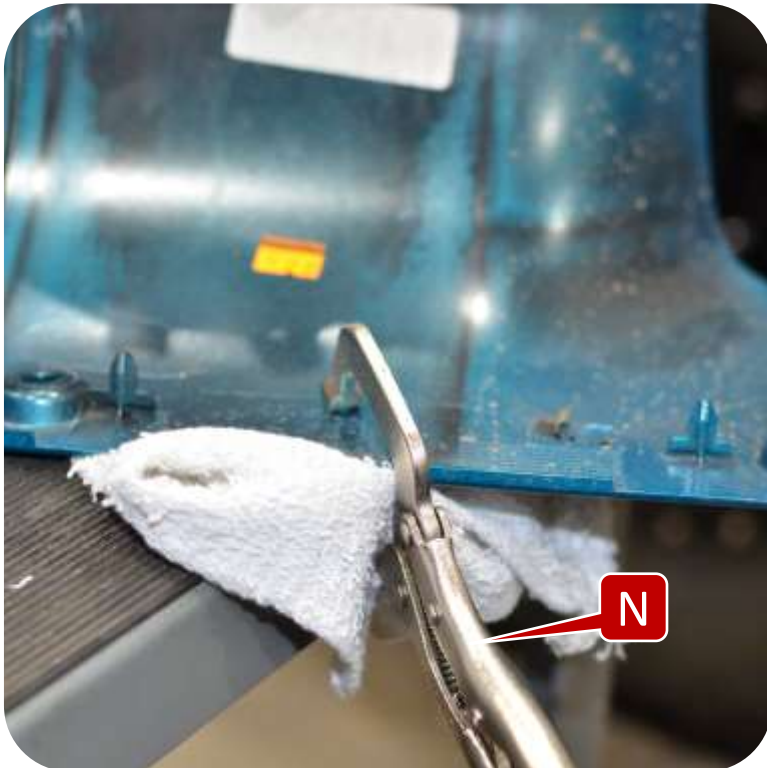
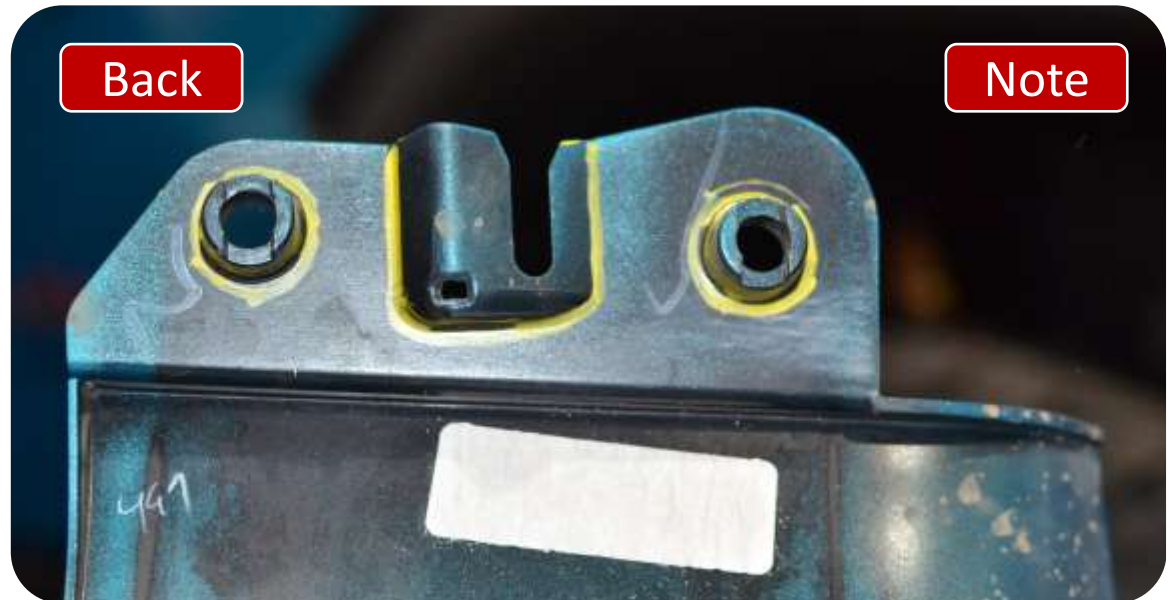
Front

Note



Back

Note

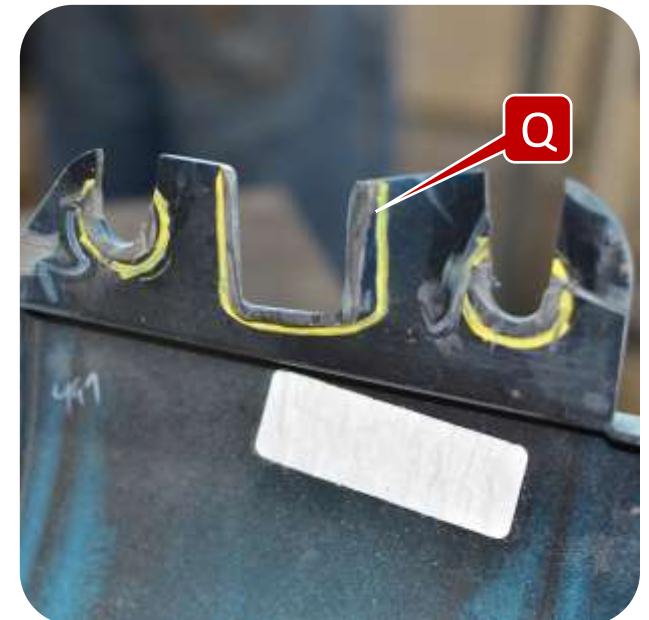
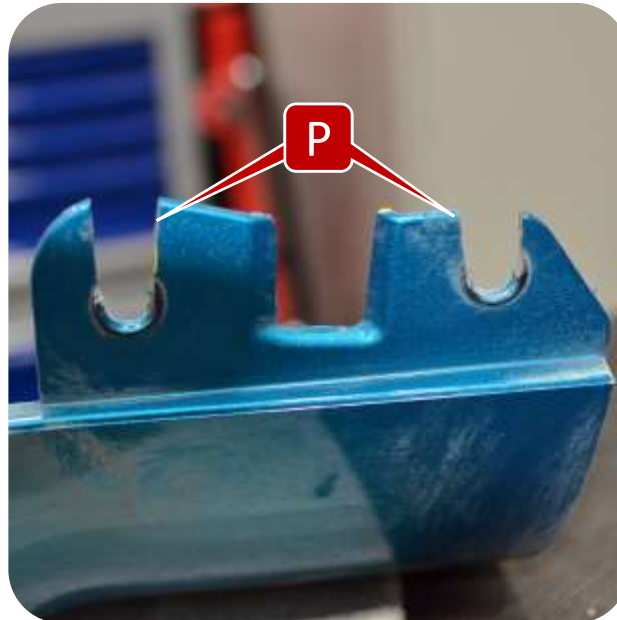


Section 3: Installation Instructions



Step 1: Front Hoop Bracket Installation

- O. Using a cut off wheel cut off the standoffs on the back of the side panel.
- P. Using the cut off wheel cut the notches on the front of the side panel. The notches need to be wide enough to fit around the bracket standoffs.
- Q. Using a cut off wheel cut off the previously marked center bracket.

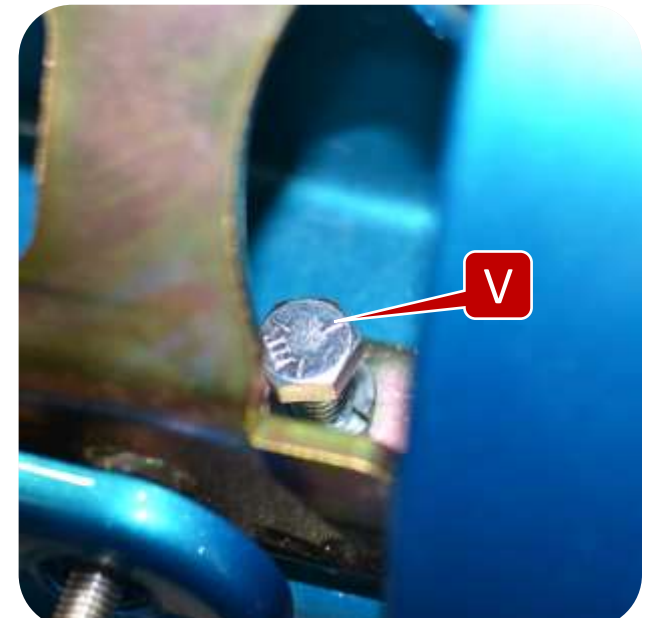
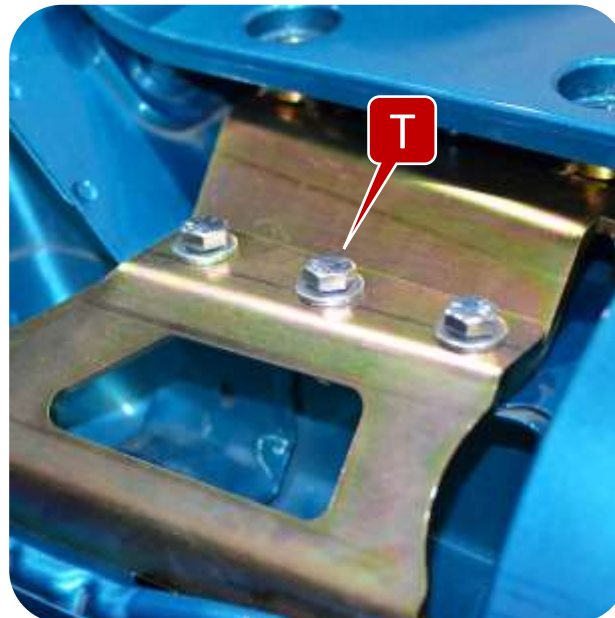
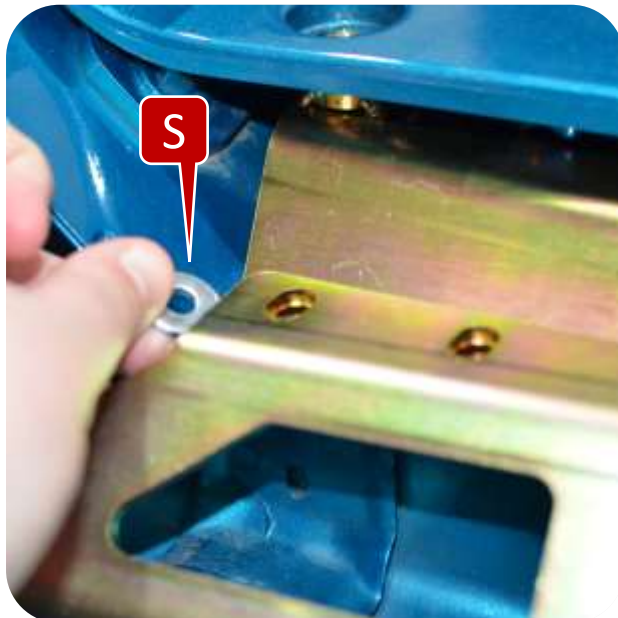
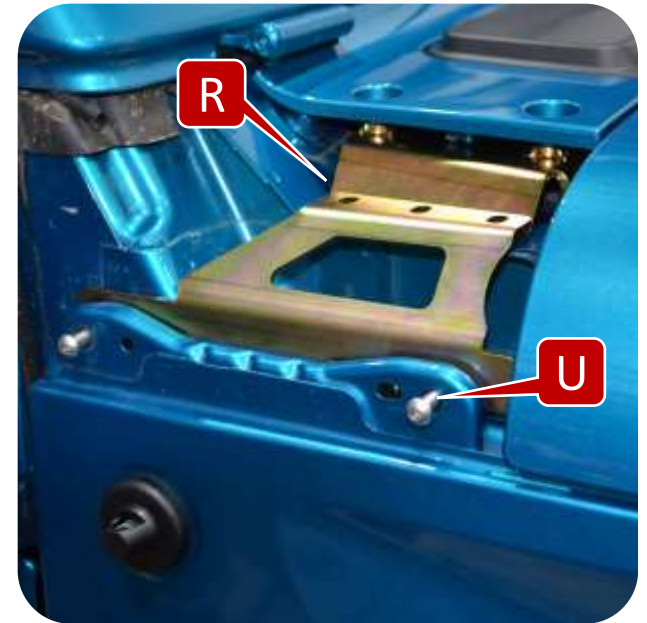


Section 3: Installation Instructions



Step 1: Front Hoop Bracket Installation

- R. Install the upper and side brackets. The side bracket sits on top of the upper bracket.
- S. Place a spacer washer between each of the three holes of the two brackets.
- T. Loosely install the provided bolts, washers and nuts into the three bolt holes.
- U. Install two of the provided allen bolts into the drilled-out stock locations to hold the side bracket into place.
- V. Install the provided bolt and split washer into the rivet nut.

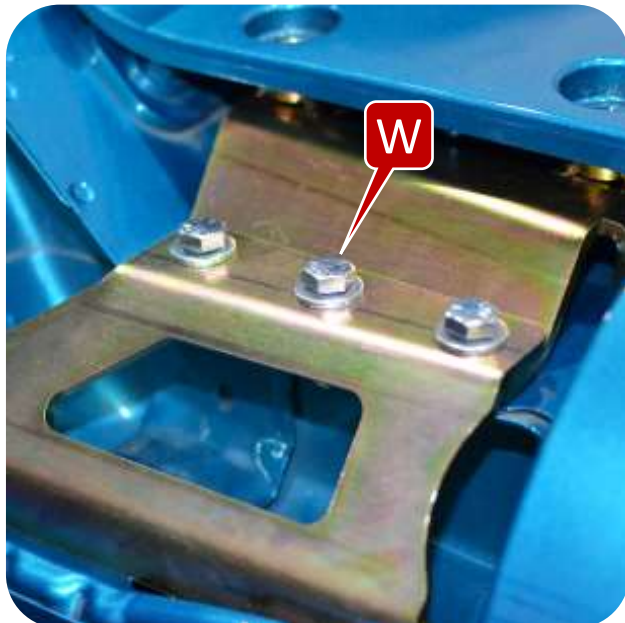




Section 3: Installation Instructions

Step 1: Front Hoop Bracket Installation

- W. Using a 1/2" socket and wrench tighten the three bracket bolts.
- X. Using a 9/16" socket tighten the rivet nut bolt.
- Y. If the allen head bolts do not move freely you must unbolt and readjust the bracket. Once the allen head bolts move freely remove the two bolts and reinstall the hood cowl.

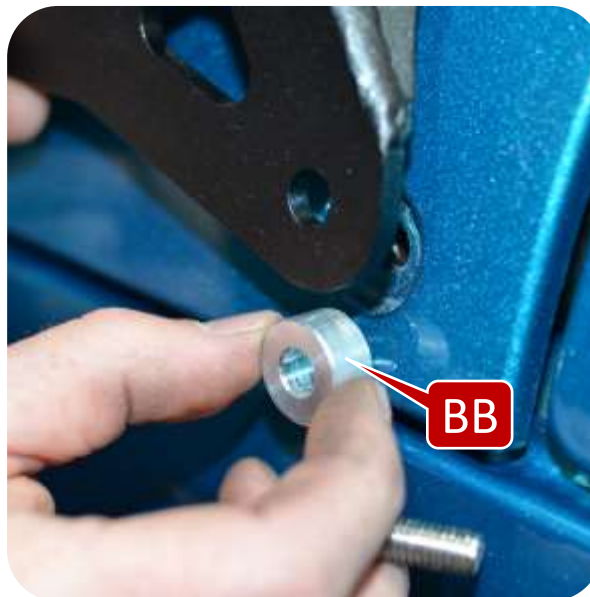
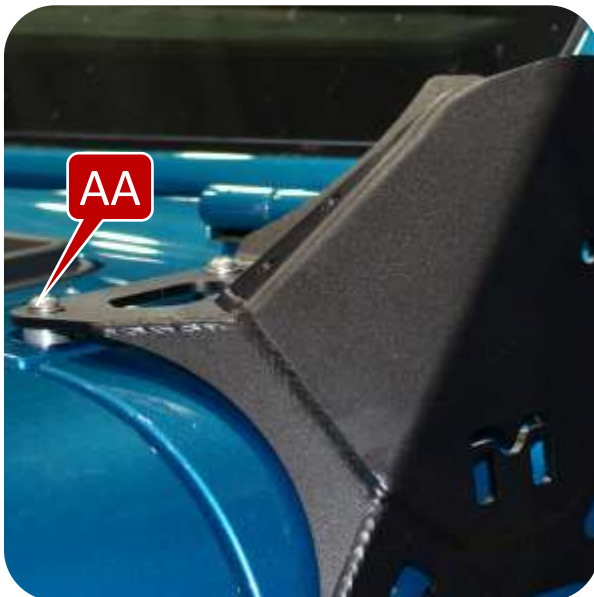
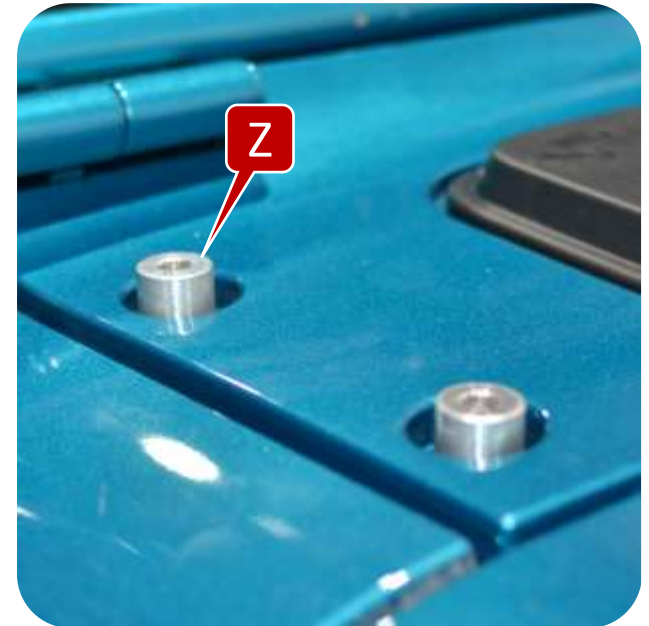


Section 3: Installation Instructions

Step 2: Front Hoop Mounting Base Installation

Note: MetalCloak highly recommends using blue lock tight on the four allen head bolts when installing the front hoop mounting base.

- Z. Place the larger provided spacers into the top T40 bolt locations.
- AA. Loosely install the hoop mounting base into the top spacers using the provided longer allen bolts.
- BB. Place the provided smaller spacers into the stock T40 bolt locations.
- CC. Loosely install the mounting base into the side spacers using the provided longer allen bolts.
- DD. Using a 5mm allen wrench tighten the 4 allen bolts. Repeat on other side.



Section 3: Installation Instructions



Step 3: Front Hoop Installation

- EE. Install the finishing caps into the front hoop.
- FF. MetalCloak recommends having a second pair of hands help install the front hoop.
- GG. Using the provided allen head bolts attach the hoop to the mounting brackets.
- HH. On the passenger side insert the antenna into the provided antenna clamp and secure to the mounting bracket using the provided hoop allen bolt. Tighten with a 7/32" allen wrench.

