



PRODUCT: Tub Mount Tire Carrier

REV: B | 10-09-2020 | II-2840

READ INSTRUCTIONS IN FULL BEFORE INSTALLATION.
QUESTIONS? CALL 916-631-8071 M-F 7:00 AM – 5:00 PM PST

The MetalCloak experience includes the ease of installation of our products. We design for most contingencies, but installation may be different based on different Jeep condition, configuration and/or year.

We are continually trying to improve our products and instructions – please help us by providing feedback and pictures if you find any part of the instructions that do not match your particular Jeep or are not easily understandable.

If you have any difficulties at all, please give us a call. Thank you and enjoy your MetalCloak Products!

IMPORTANT NOTE: We use Stainless Steel Hardware where possible. Therefore, a tube of Silver Anti-seize is provided and should be used on all bolts—only a small amount is needed.

WARRANTY INFORMATION: This article is sold without warranty expressed or implied. No warranty or representation is made as to this products ability to protect the user from injury or death. The user assumes that risk. The effectiveness, warranty and longevity of this equipment are directly related to the manner in which it is INSTALLED, USED and/or MAINTAINED. THE USER ASSUMES ALL RISK. By purchasing this product and opening the packaging, purchasers expressly acknowledge, understand and agree that they take, select and purchase these MetalCloak products from Armored Works, LLC, its affiliates and distributors and agents as is and with all faults. The entire risk as to the quality and performance of these MetalCloak products is with the purchaser. Working on your vehicle can be a dangerous activity. If you are unsure of what you are doing, please leave mechanical or safety critical work to a skilled mechanic. We take no responsibility for the incorrect use and/or installation of MetalCloak products.

Section 1: Tools & Notes on Installation

Tools Required: This list is the recommended tools for ease of installation. Other versions of the same tool can be used. For example, Allen Wrenches instead of Allen Drive Sockets.



Socket & Ratchet Wrench

7/32" Allen Wrench or Socket



9/16" Wrench
3/4" Wrench

9/16" Socket
3/4" Socket



1/8" up to 3/8" Drill Bits
or
3/8" Step Up Bit

Drill



Center Punch

Crescent Wrench



HOW TO USE THIS GUIDE: The installation guide contains ALL steps for installation. Please read and follow the instructions in order of each page top to bottom, and left to right.

Jeep Model: Instructions may apply to multiple Jeep models, but are labeled separately where appropriate (i.e. TJ vs. LJ).

Options: Because of the number of component options we offer, these instructions may contain steps that will not match your particular configuration. You can skip these steps.

Images: Pictures are provided and parts are labeled throughout the instructions. Each text box contains guidance based on the pictures next to it. The text will refer to alphabetical labels (A, B, etc.) found in the images.

Installation Notes: Terms may be used in the body of the instructions that you may not be familiar with, if you have any questions feel free to contact us at the number below, or email techhelp@metalcloak.com

QUESTIONS: Any questions or comments about the instructions? Call us at 916-631-8071 M-F 7:00 AM – 5:00 PM PST.

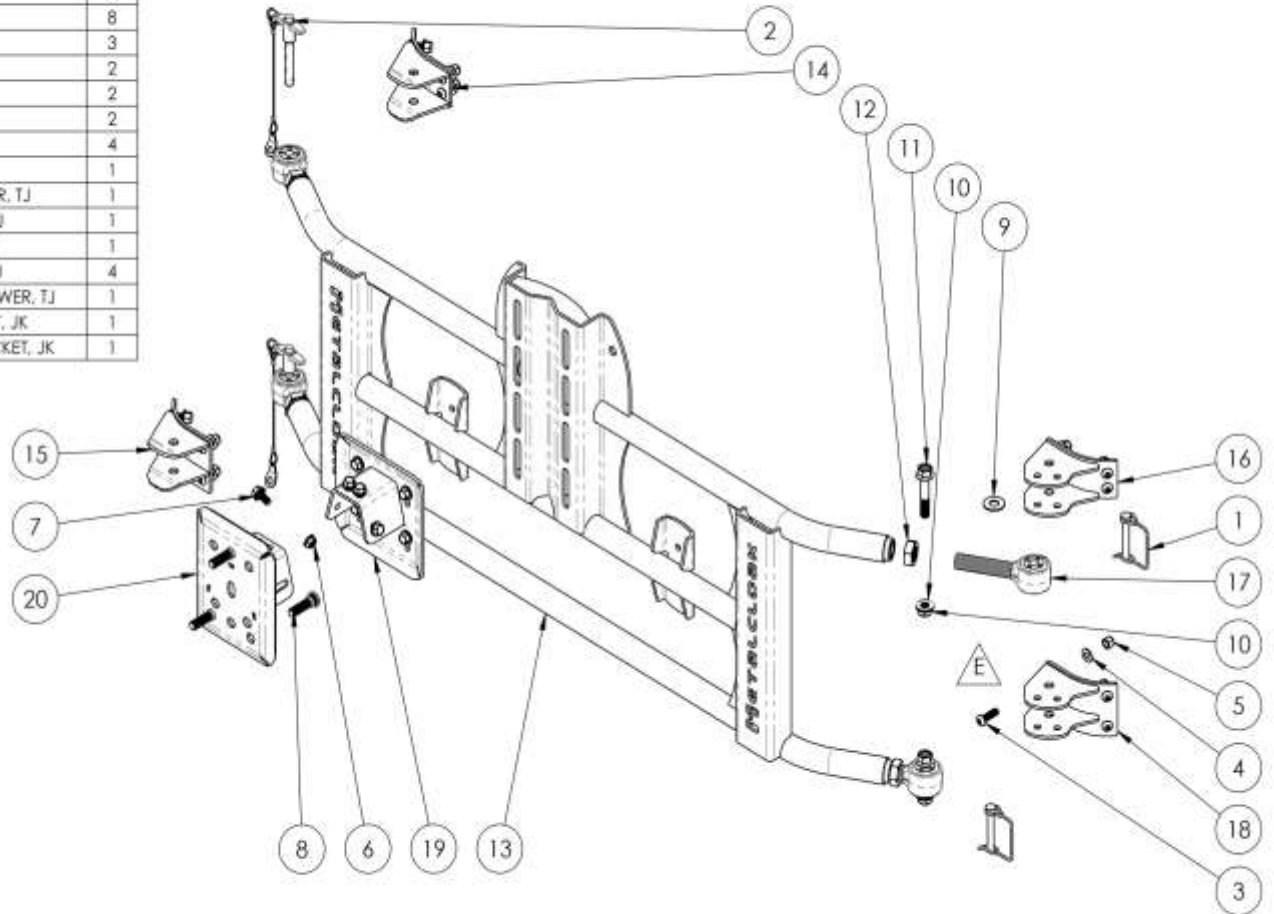
Section 2: Product Components



DC-0035 RevA

SHEET 1 OF 1
8

ITEM	PART NUMBER/DESCRIPTION	QTY.
1	FA-0069 CLEVIS PIN, WIRE LOCK, .38OD X 2.5L STL	2
2	FA-6101 T-HANDLE LOCKING PIN, 0.50 X 2.50 UL SS	2
3	FS-06002 SBHCS, 0.38-16 X 1.25L SS 18-8 PLAIN	16
E 4	FS-06004 WASHER, 0.41ID X 0.81OD X 0.05TH SS 18-8	16
5	FS-06030 NYLOCK NUT, 0.38-16 X 0.45H STL GF ZINC	16
6	FS-06053 SERRATED FLANGE LOCK NUT, 0.38-16 X 0.34H STL GF ZINC	6
7	FS-06104 HHCS SERRATED FLANGE, 0.38-16 X 0.75L STL G5 ZINC	8
8	FS-08062 WHEEL STUD, 0.5-20 X 1.63L STL G8 ZINC	3
9	FS-08091 WASHER, 0.566ID X 1.25OD X 0.08TH PTFE	2
10	FS-08127 NYLOCK FLANGE NUT, 0.5-13 X 0.56H STL GF ZINC	2
11	FS-08220 HHCS FLANGE, 0.5-13 X 2.75L STL G8 ZINC	2
12	FS-14120 JAM NUT, 0.88-14 X 0.48 STL G5 ZINC	4
13	WM-0840 WELDMENT, TUB-MOUNT TIRE CARRIER, TJ	1
D 14	WM-0841 WELDMENT, TUB-MOUNT TIRE CARRIER, SIDE BRACKET UPPER, TJ	1
15	WM-0842 WELDMENT, TUB-MOUNT CARRIER, SIDE BRACKET LOWER, TJ	1
16	WM-0843 WELDMENT, TUB-MOUNT TIRE CARRIER, HINGE BRACKET, TJ	1
17	WM-0844 SLEEVED DUROTRAK BUSHING, TUB MOUNT TIRE CARRIER, TJ	4
18	WM-0845 WELDMENT, TUB-MOUNT TIRE CARRIER, HINGE BRACKET LOWER, TJ	1
19	WM-3941 WELDMENT, LOW PROFILE VERTICAL ADJUSTMENT BRACKET, JK	1
20	WM-3942 WELDMENT, LOW PROFILE HORIZONTAL ADJUSTMENT BRACKET, JK	1



THE INFORMATION CONTAINED ON THIS DRAWING IS THE EXCLUSIVE PROPERTY OF ARMORED WORKS, LLC. UNAUTHORIZED REPRODUCTION IS PROHIBITED.
DO NOT SCALE DRAWING
Metal Cloak
 A DIVISION OF ARMORED WORKS, LLC
PART NUMBER/DESCRIPTION
 2840 TUB-MOUNT TIRE CARRIER, TJ

Section 3: Installation Instructions

Step 1: Bracket Orientation

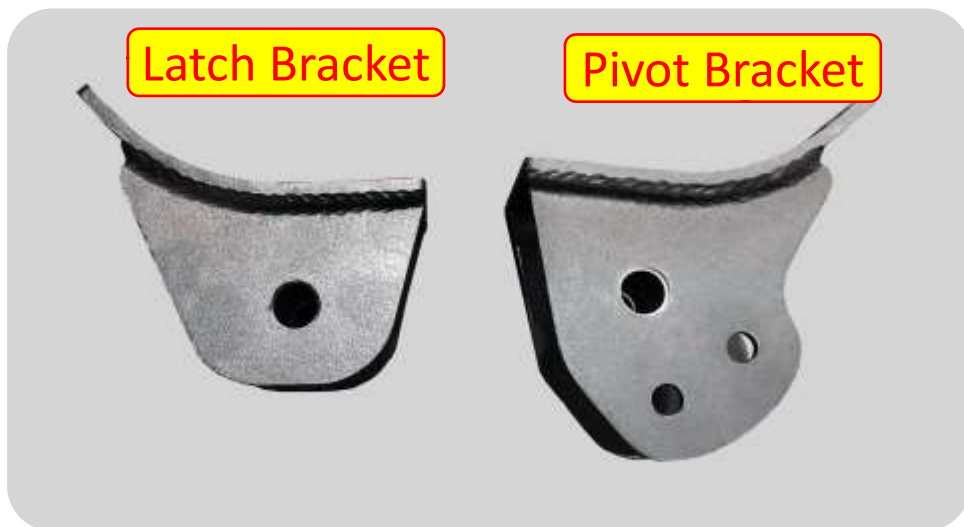
Important Note: To install the tub mount tire carrier you MUST have corner guard protection. The tire carrier will not mount directly to the Jeep tub.

Important Note: The tub mount tire carrier was specifically designed for MetalCloak's corner guards but will work with other manufactures corner guards. If you do not have MetalCloak corner guards align the tire carrier brackets by measuring approximately 7" from the tailgate edge.

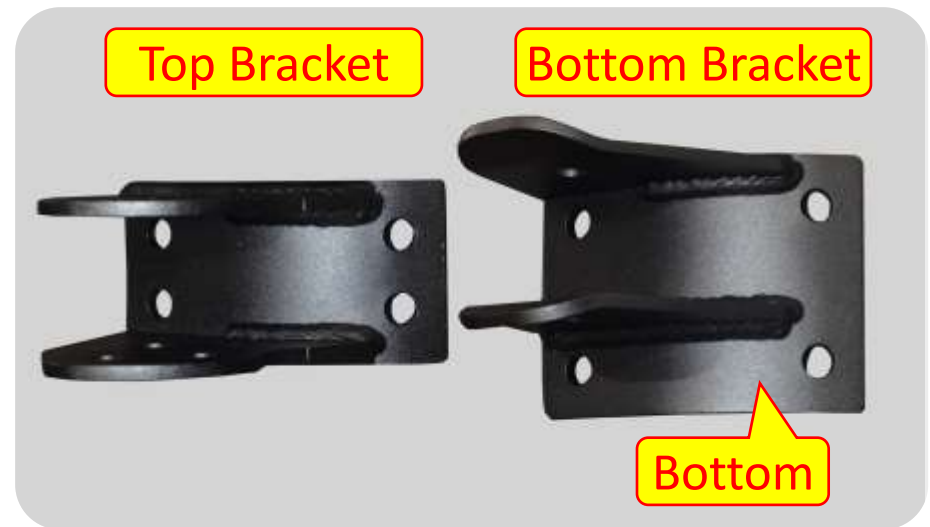
Important Note: the pivot brackets will work on either side of the Jeep allowing you to choose which way you would like the tire carrier to swing.



Top View



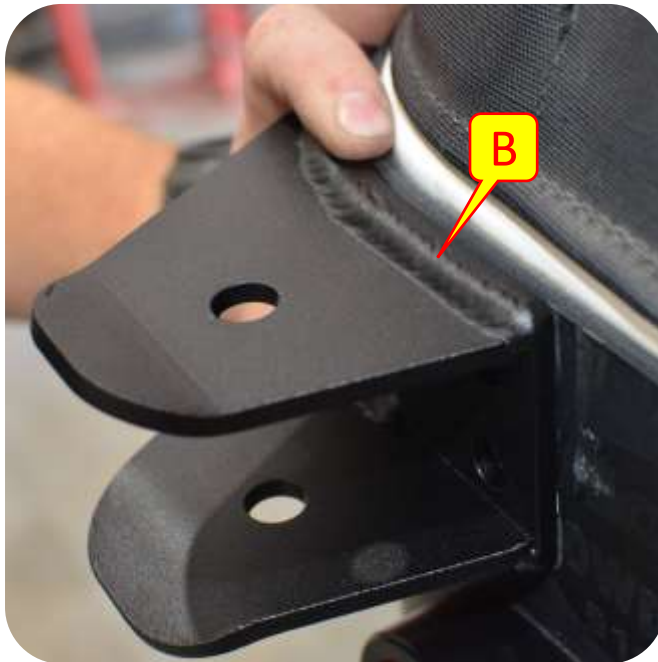
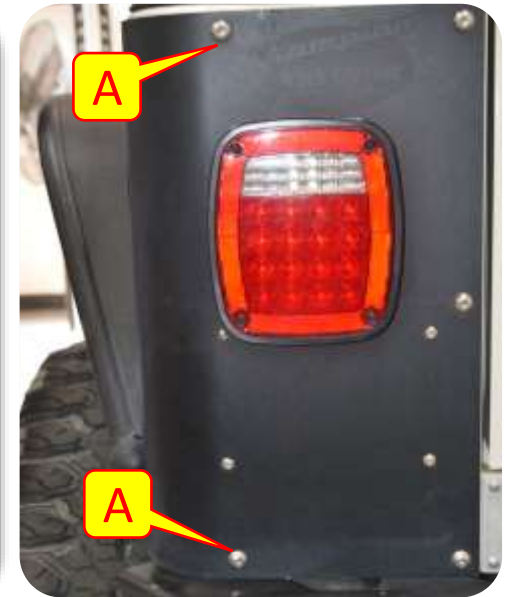
Side View



Section 3: Installation Instructions

Step 2: Tire Carrier Upper Bracket Installation

- A. Using a 7/32" allen wrench remove the corner guard bolts that will interfere with the tire mount brackets on each side.
- B. Align the top brackets to be flush with the top of the corner guards.
- C. Mark the holes for drilling.
- D. Center punch the center of the hole and use a step-up bit to drill the holes up to 3/8".
- E. Paint the holes to help prevent rust.

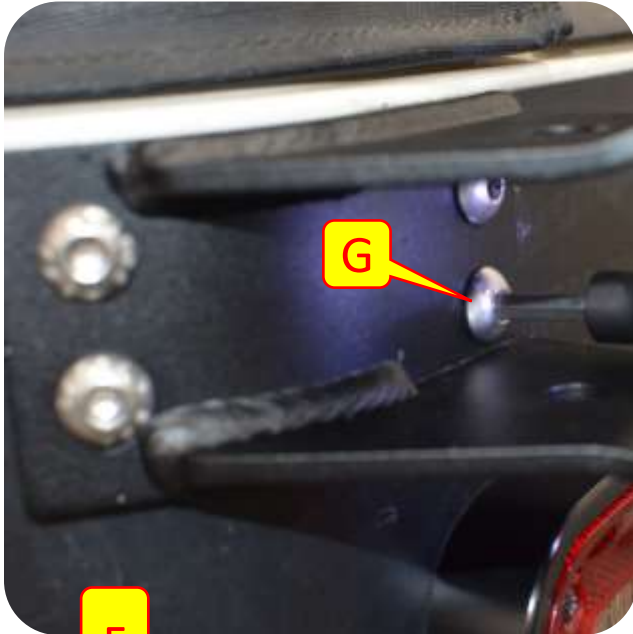


Note: MetalCloak recommends pulling back the carpet on the inside of the tub at the corners to prevent drilling through the carpet.

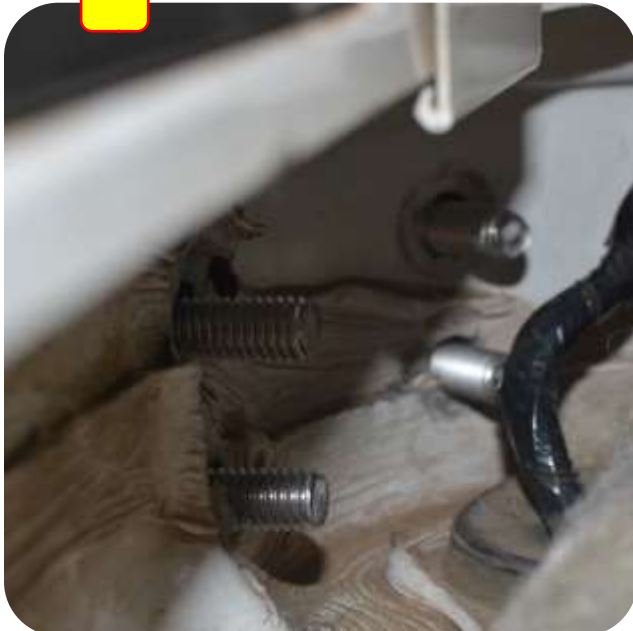


Section 3: Installation Instructions

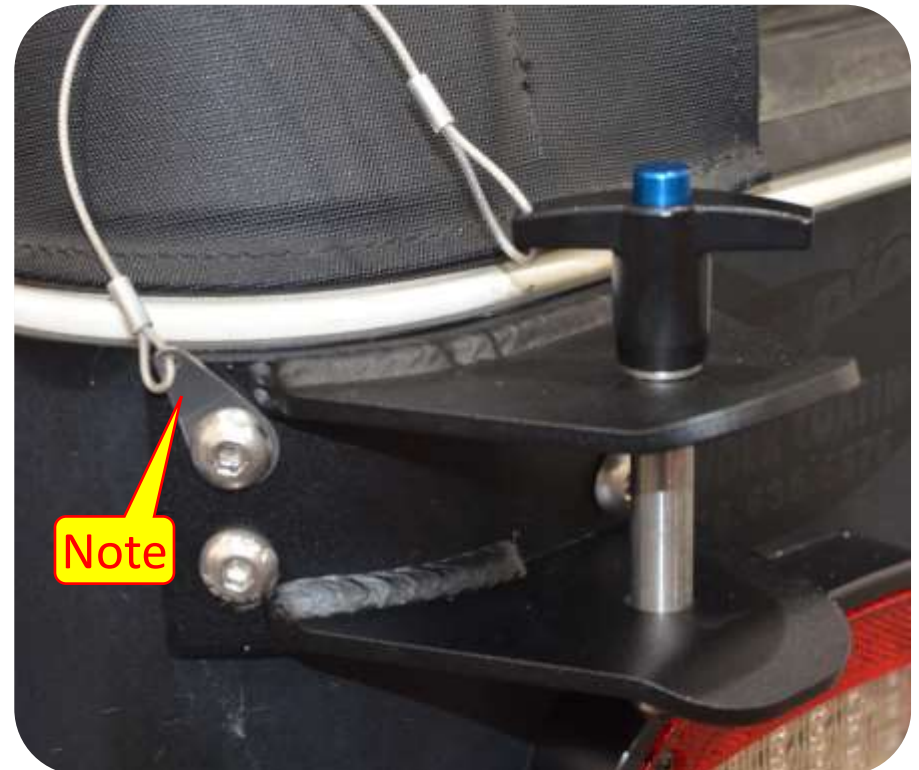
Step 2: Tire Carrier Upper Bracket Installation



- F. Loosely install the provided bolts into the brackets and install the provided nuts on the interior of the tub.
- G. Using a 7/32" allen socket and 9/16" wrench install and tighten the provided hardware .



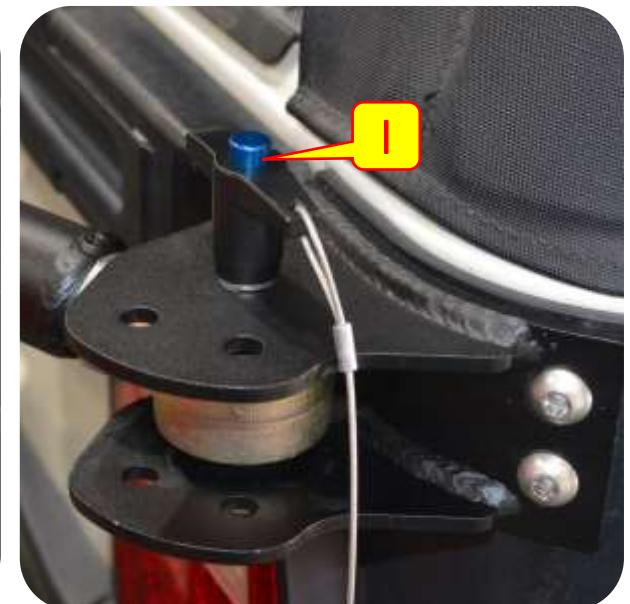
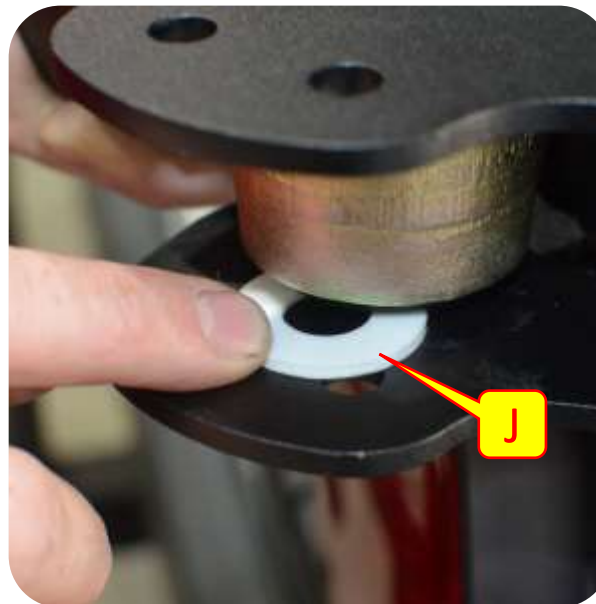
Note: When installing the upper latch side bracket place the t-handle pin lanyard mounting bracket to desired bolt on the latch end.



Section 3: Installation Instructions

Step 3: Tire Carrier Lower Bracket Installation

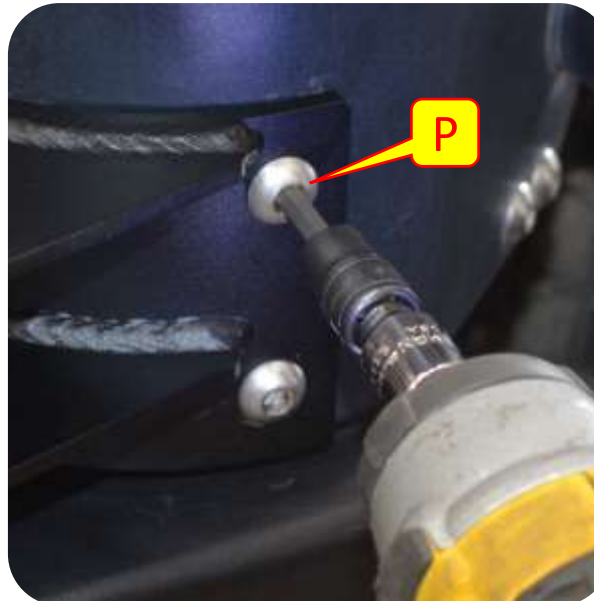
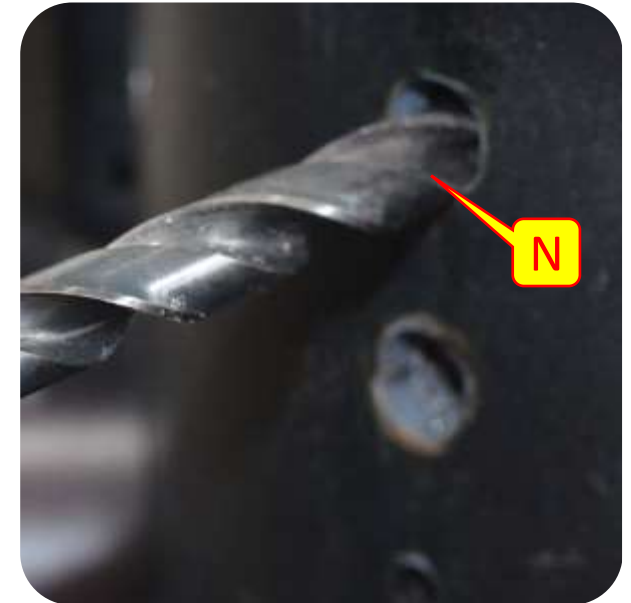
- H. Install the durotrak joints on the ends of the tire carrier (leaving 3-5 threads still exposed) making sure to apply anti-seize to the housing before installation.
- I. Install the tire carrier into the upper brackets and install the T-Handle pins to help hold the carrier into place.
- J. When installing the pivot end of the tire carrier insert the provided plastic washer underneath the durotrak joint.
- K. Place the lower bracket into place and align with durotrak bushing, Place bolt to help align and hold the bracket into place.



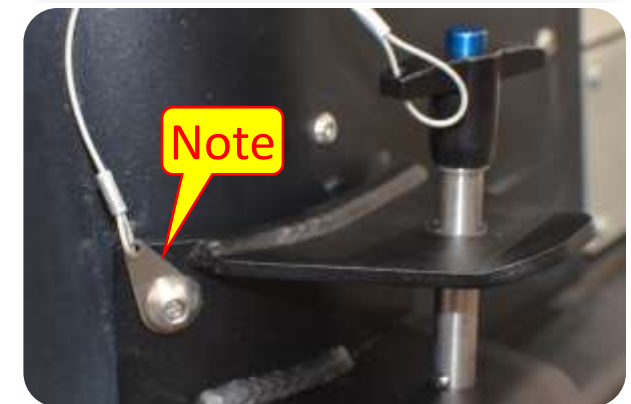
Section 3: Installation Instructions

Step 3: Tire Carrier Lower Bracket Installation

- L. Mark the holes for drilling.
- M. Remove the bolts or T-handles holding the tire carrier into place and remove the tire carrier.
- N. Center punch the center of the hole and use a step-up bit to drill the holes up to 3/8".
- O. Paint the holes to help prevent rust.
- P. Install the lower brackets using a 7/32" allen socket and a 9/16" wrench.



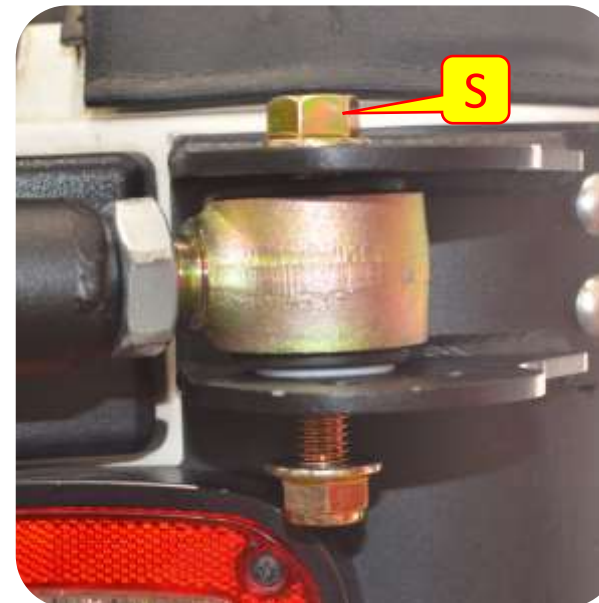
Note: When installing the lower latch side bracket place the t-handle pin lanyard mounting bracket to desired bolt on the latch end.



Section 3: Installation Instructions

Step 4: Tire Carrier Installation

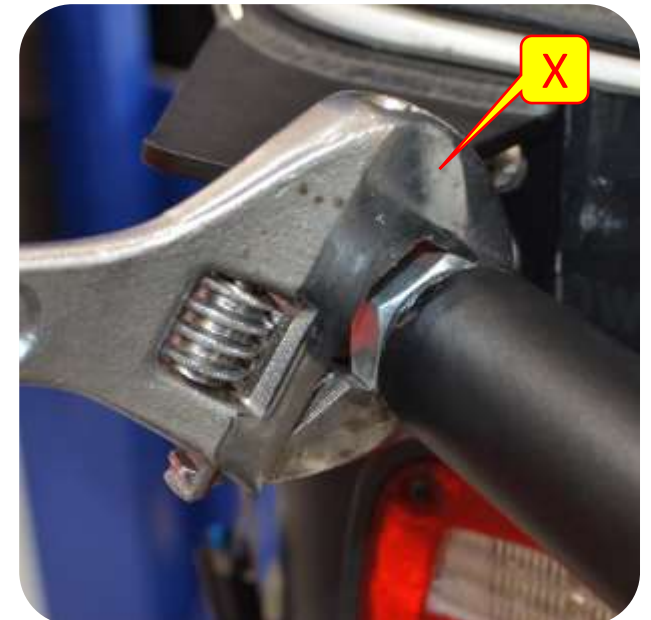
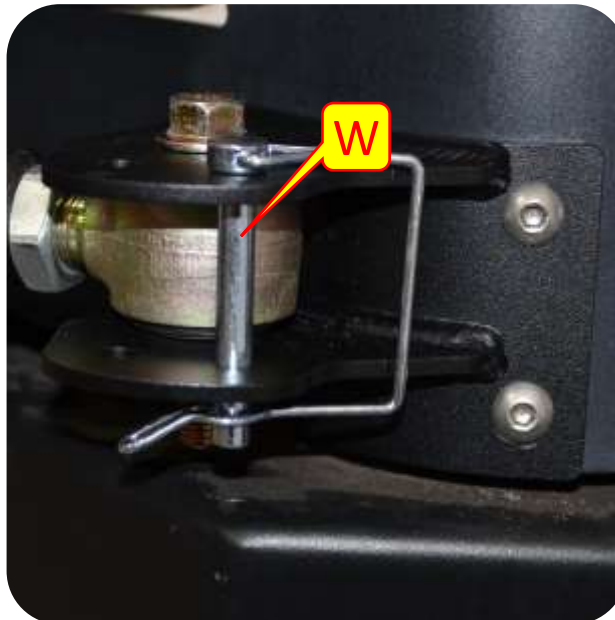
- Q. Reinstall the tire carrier into the mounting brackets.
- R. Install the pivot ends of the tire carrier and insert the provided plastic washers underneath the durotrak joints.
- S. Install the provided bolt and flange nuts into the pivot end of the tire carrier.
- T. Adjust the bushings on the latch end of the tire carrier making sure the bushing aligns for t-handle insertion.
- U. Install T-handles.



Section 3: Installation Instructions

Step 4: Tire Carrier Installation

- V. Using a 3/4" socket and wrench tighten the pivot end nuts and bolts.
- W. Install the clevis pins on the pivot end (*Top & Bottom*) of the tire carrier.
- X. Using a crescent wrench tighten the bushing lock nuts.

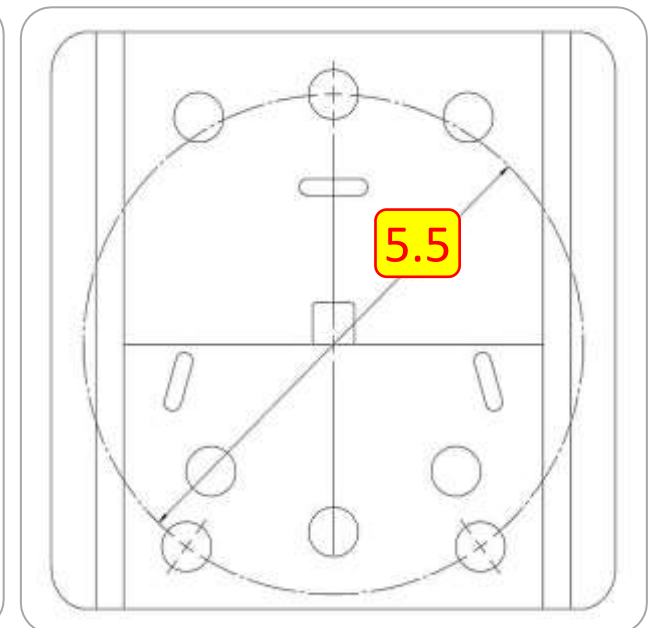
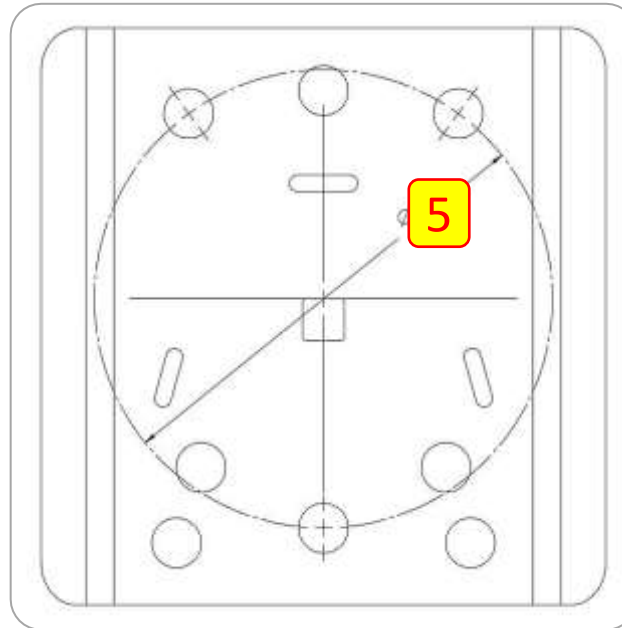
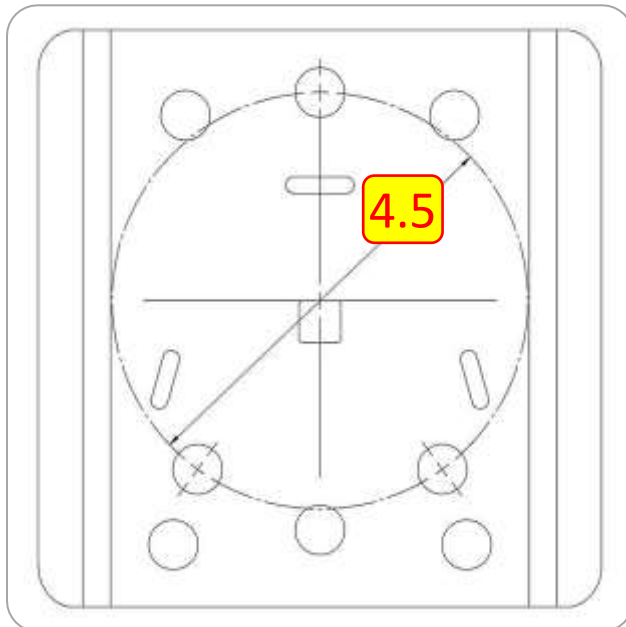


Section 2: Installation Instructions

Step 5: Spare Tire Installation



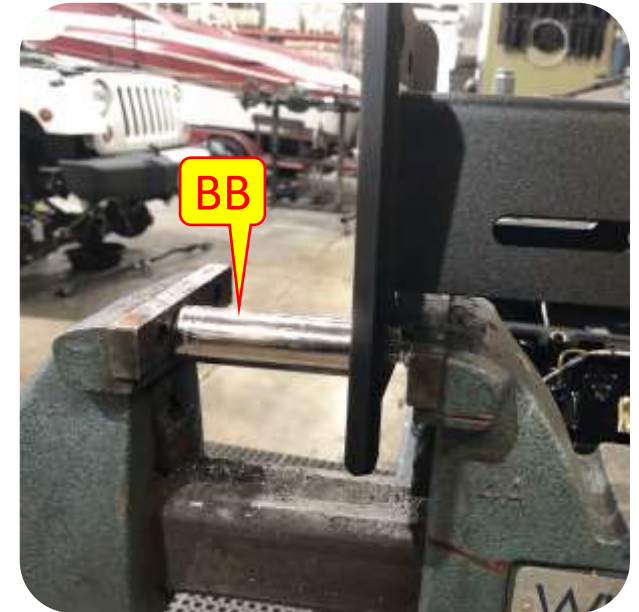
- Y. Press the Wheel Studs (yellow) into the Horizontal Adjustment Bracket (orange) prior to installation. The images provided below show which holes are intended for the most common bolt patterns.



Section 2: Installation Instructions

Step 5: Spare Tire Installation

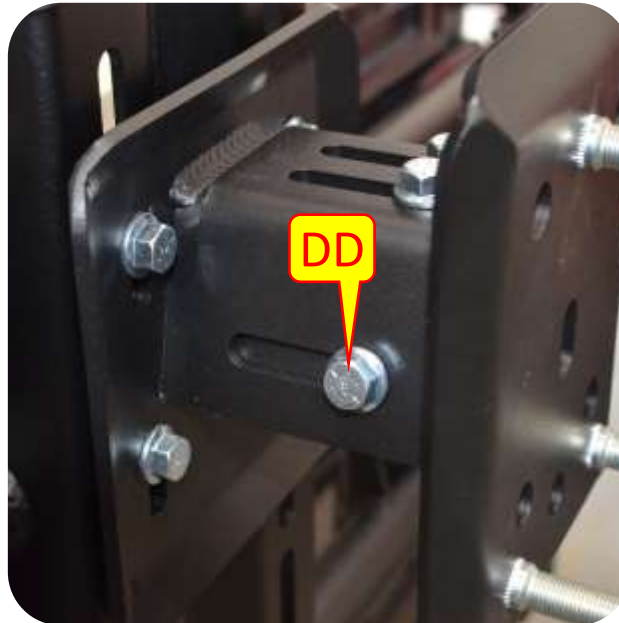
- Z. To press the wheel stud into place. Place the wheel stud into the Adjustment bracket in the chosen wheelbase location.
- AA. Place a long socket on the other end of the adjustment bracket. Make sure the socket has enough room for the wheel stud to be pressed in fully.
- BB. Place the wheel stud and socket inside a vice and tighten the vice until the wheel stud is completely pressed in. repeat process for remaining wheel studs.



Section 2: Installation Instructions

Step 5: Spare Tire Installation

- CC. Install the vertical wheel adjuster to the desired height and tighten the provided nuts and bolts using a 9/16" socket and wrench.
- DD. Install the horizontal wheel adjuster to the vertical wheel adjuster. Tighten the hardware hand tight.
- EE. Install the spare tire and hold into place with the tire lug nuts. MetalCloak recommends having two people lift the spare tire onto the wheel adjuster.
- FF. Adjust the horizontal wheel bracket to the appropriate backspacing for your tire, fully tighten hardware with a 9/16" socket and wrench.



Section 2: Installation Instructions



Step 6: Final Adjustments

Important Note: *The additional weight of the tire can cause the need for adjustments. Open and close the swing out to make sure the bushings align properly, and the pins install smoothly. If you require adjustments make sure to adjust the bushings evenly (top and bottom) on the pivot side of the tire carrier. Once you are satisfied with the alignment make sure ALL hardware is fully tightened.*