



Installation Instructions



PRODUCT: JK ARB Twin Compressor Mounting Kit

REV: B | 02-03-2017 | II-3152

**READ INSTRUCTIONS IN FULL BEFORE INSTALLATION.
QUESTIONS? CALL 916-631-8071 M-F 7:00 AM – 5:00 PM PST**

The MetalCloak experience includes the ease of installation of our products. We design for most contingencies, but installation may be different based on different Jeep condition, configuration and/or year.

We are continually trying to improve our products and instructions – please help us by providing feedback and pictures if you find any part of the instructions that do not match your particular Jeep or are not easily understandable.

If you have any difficulties at all, please give us a call. Thank you and enjoy your MetalCloak Products!

IMPORTANT NOTE: We use Stainless Steel Hardware where possible. Therefore, a tube of Silver Anti-seize is provided and should be used on all bolts—only a small amount is needed.

WARRANTY INFORMATION: This article is sold without warranty expressed or implied. No warranty or representation is made as to this products ability to protect the user from injury or death. The user assumes that risk. The effectiveness, warranty and longevity of this equipment are directly related to the manner in which it is INSTALLED, USED and/or MAINTAINED. THE USER ASSUMES ALL RISK. By purchasing this product and opening the packaging, purchasers expressly acknowledge, understand and agree that they take, select and purchase these MetalCloak products from Armored Works, LLC, its affiliates and distributors and agents as is and with all faults. The entire risk as to the quality and performance of these MetalCloak products is with the purchaser. Working on your vehicle can be a dangerous activity. If you are unsure of what you are doing, please leave mechanical or safety critical work to a skilled mechanic. We take no responsibility for the incorrect use and/or installation of MetalCloak products.

Section 1: Tools & Notes on Installation



Tools Required: This list is the recommended tools for ease of installation. Other versions of the same tool can be used. For example, Allen Wrenches instead of Allen Drive Sockets.



Ratchet

10mm Socket or Wrench
13mm Socket or Wrench
14mm Socket or Wrench



Drill

17/32" Drill Bit



9/64" Allen Wrench

11/16" Box Wrench



HOW TO USE THIS GUIDE: The installation guide contains ALL steps for installation. Please read and follow the instructions in order of each page top to bottom, and left to right.

Jeep Model: Instructions may apply to multiple Jeep models, but are labeled separately where appropriate (i.e. TJ vs. LJ).

Options: Because of the number of component options we offer, these instructions may contain steps that will not match your particular configuration. You can skip these steps.

Images: Pictures are provided and parts are labeled throughout the instructions. Each text box contains guidance based on the pictures next to it. The text will refer to alphabetical labels (A, B, etc.) found in the images.

Installation Notes: Terms may be used in the body of the instructions that you may not be familiar with, if you have any questions feel free to contact us at the number below, or email techhelp@metalcloak.com

QUESTIONS: Any questions or comments about the instructions? Call us at 916-631-8071 M-F 7:00 AM – 5:00 PM PST.

Section 2: Product Components

DC-0001 REV A

SHEET 1 OF 1

ITEM	PART NUMBER/DESCRIPTION	QTY
1	CP-0089 INSTALLATION TOOL, M8-1.25 RIVET NUT	1
2	CP-3501 BRACKET, ARB TWIN COMPRESSOR MOUNT, JK	1
3	CP-3502 GUSSET, ARB TWIN COMPRESSOR MOUNT, JK	1
4	FA-0086 FLANGE HEX NYL LOCKNUT, M6-1.0 X .56FLG ZNC PLTD	1
5	FA-0136 HHCS, M8-1.25 X 25L 18-8 SS	1
6	FA-0137 RIVET NUT, M8-1.25 X 6MM ZNC PLT STL	1
7	FA-0138 FHSC, M6-1 X 25L 18-8 SS	1

THE INFORMATION CONTAINED ON THIS DRAWING IS THE EXCLUSIVE PROPERTY OF ARMORED WORKS, LLC. UNAUTHORIZED REPRODUCTION IS PROHIBITED.

DO NOT SCALE DRAWING

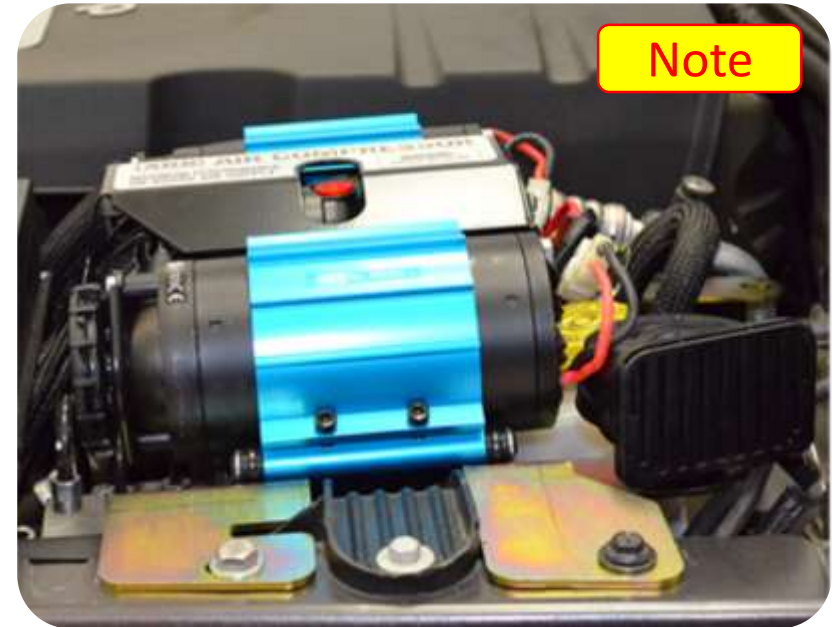
Metal Cloak
A DIVISION OF ARMORED WORKS, LLC

PART NUMBER/DESCRIPTION
3152 ARB TWIN COMPRESSOR MOUNT KIT, JK

Section 3: Installation Instructions

Important Note

Note: Before installing the MetalCloak ARB Twin Compressor Mounting Kit you must install the ARB Compressor onto the Mount. All Installation instructions are shown without the ARB Compressor mounted to better show the mounts installation process.



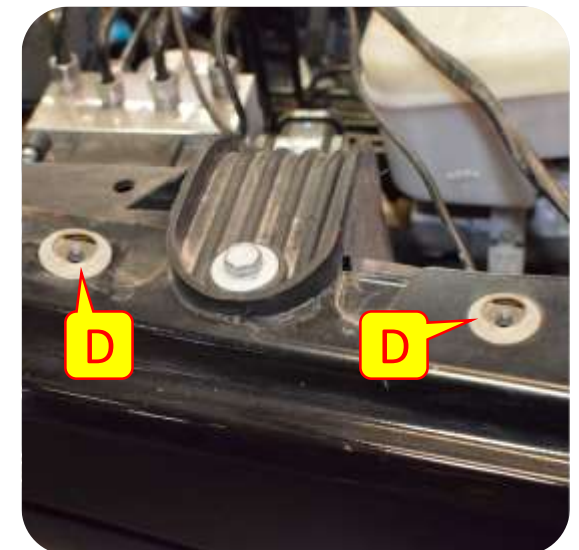
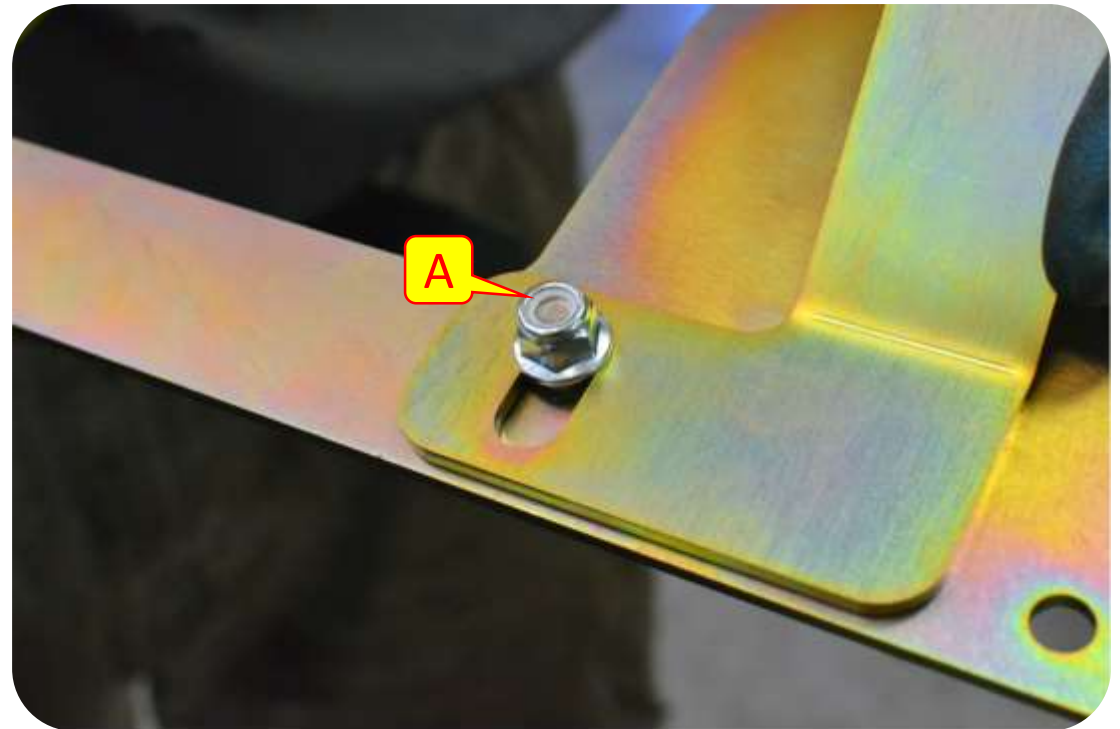
Note: On 2012 or later you may need to nudge the AC lines out of the way for the Mount to fit.



Section 3: Installation Instructions

Step 1: ARB Twin Compressor Mounting Kit Installation

- A. Install the Gusset to the Compressor mount in the tapered bolt location. Use a 10mm socket and a 9/64" Allen wrench to tighten the bolt.
- B. Install the ARB Twin Compressor to the compressor mount so that the filters are facing towards the front of the vehicle.
- C. Remove the horn from the horn mount
- D. Remove the two bolts from the top driver side Jeep fender using a 10mm socket.



Section 3: Installation Instructions

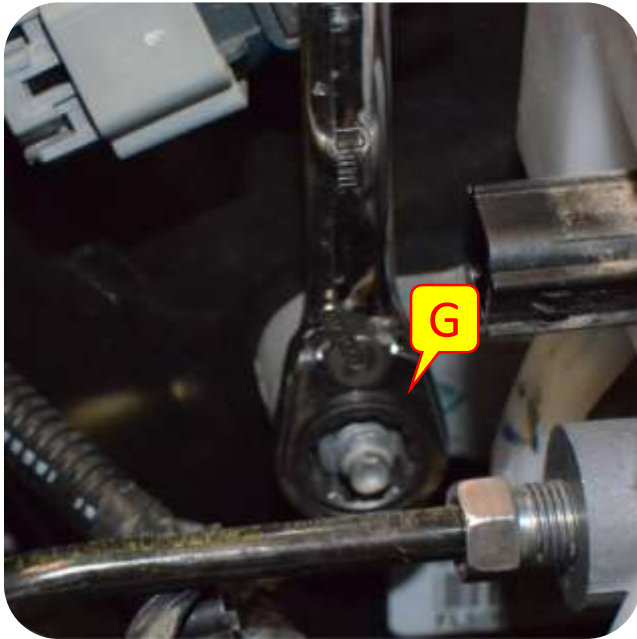
Step 1: ARB Twin Compressor Mounting Kit Installation

- E. Using a 17/32" drill bit drill the left hole on the driver side fender.
- F. Using the provided installation tool and using a 11/16" end wrench and 13mm socket on a ratchet to install the provided rivet nut.

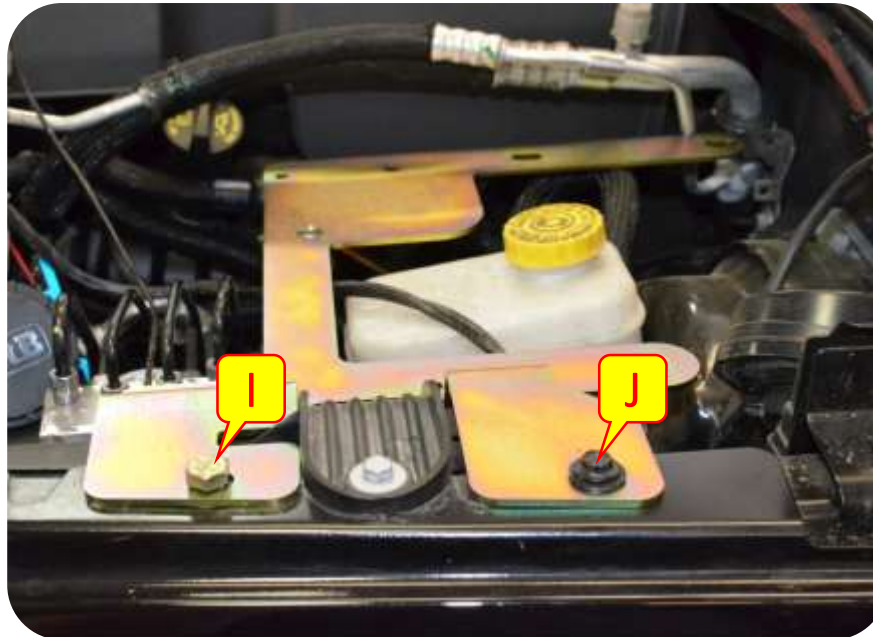
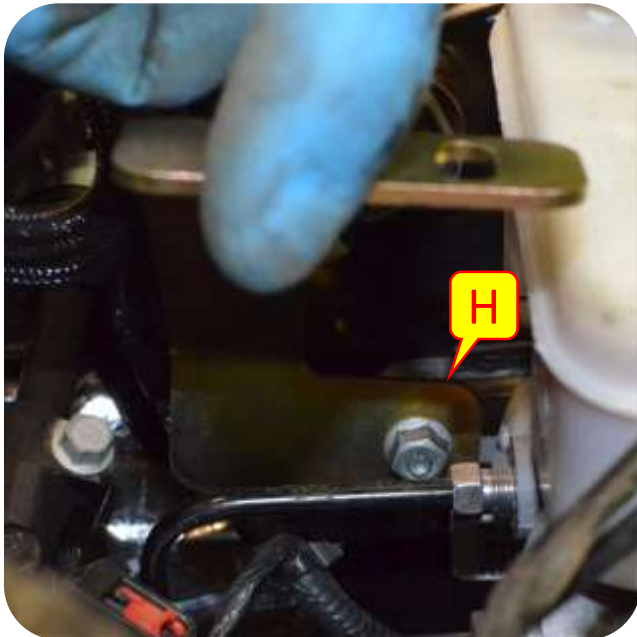


Section 3: Installation Instructions

Step 1: ARB Twin Compressor Mounting Kit Installation



- G. Loosen the Master cylinder nut closest to the passenger side using a 13mm wrench (*do not remove the nut*).
- H. Using the slotted end of the gusset slide the gusset onto the Master cylinder bolt.
- I. Align the compressor Mount and install the provided bolt into the rivet nut hand tight.
- J. Install the stock fender bolt hand tight.



Section 3: Installation Instructions

Step 1: ARB Twin Compressor Mounting Kit Installation

- K. Using a 13mm wrench tighten down the Master cylinder nut.
- L. Using a 10mm socket tighten down the stock fender bolt.
- M. Tighten down the rivet nut bolt using a 14mm socket.
- N. Install the horn to the Compressor mount.

