



PRODUCT: HOW TO TRIM YOUR JK REAR FENDER WELLS

REV: A | 07-23-2014 | II-fender wells

READ INSTRUCTIONS IN FULL BEFORE INSTALLATION.

QUESTIONS? CALL 916-631-8071 M-F 7:00 AM – 5:00 PM PST

The MetalCloak experience includes the ease of installation of our products. We design for most contingencies, but installation may be different based on different Jeep condition, configuration and/or year.

We are continually trying to improve our products and instructions – please help us by providing feedback and pictures if you find any part of the instructions that do not match your particular Jeep or are not easily understandable.

If you have any difficulties at all, please give us a call. Thank you and enjoy your MetalCloak Products!

IMPORTANT NOTE: We use Stainless Steel Hardware where possible. Therefore, a tube of Silver Anti-seize is provided and should be used on all bolts—only a small amount is needed.

WARRANTY INFORMATION: This article is sold without warranty expressed or implied. No warranty or representation is made as to this products ability to protect the user from injury or death. The user assumes that risk. The effectiveness, warranty and longevity of this equipment are directly related to the manner in which it is INSTALLED, USED and/or MAINTAINED. THE USER ASSUMES ALL RISK. By purchasing this product and opening the packaging, purchasers expressly acknowledge, understand and agree that they take, select and purchase these MetalCloak products from Armored Works, LLC, its affiliates and distributors and agents as is and with all faults. The entire risk as to the quality and performance of these MetalCloak products is with the purchaser. Working on your vehicle can be a dangerous activity. If you are unsure of what you are doing, please leave mechanical or safety critical work to a skilled mechanic. We take no responsibility for the incorrect use and/or installation of MetalCloak products.

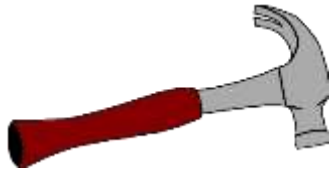
Section 1: Tools & Notes on Installation

Tools Required: This list is the recommended tools for ease of installation. Other versions of the same tool can be used. For example, Allen Wrenches instead of Allen Drive Sockets.



Safety Glasses

Black Spray Paint



Hammer

Making Tape



Grinder

Marker



HOW TO USE THIS GUIDE: The installation guide contains ALL steps for installation. Please read and follow the instructions in order of each page top to bottom, and left to right.

Jeep Model: Instructions may apply to multiple Jeep models, but are labeled separately where appropriate (i.e. TJ vs. LJ).

Options: Because of the number of component options we offer, these instructions may contain steps that will not match your particular configuration. You can skip these steps.

Images: Pictures are provided and parts are labeled throughout the instructions. Each text box contains guidance based on the pictures next to it. The text will refer to alphabetical labels (A, B, etc) found in the images.

Installation Notes: Terms may be used in the body of the instructions that you may not be familiar with, if you have any questions feel free to contact us at the number below, or email techhelp@metalcloak.com

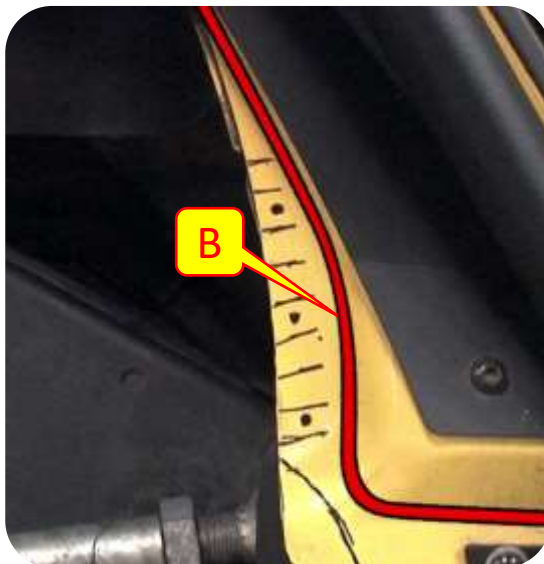
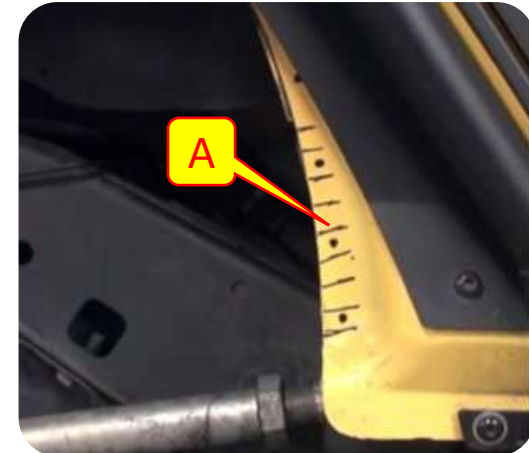
QUESTIONS: Any questions or comments about the instructions? Call us at 916-631-8071 M-F 7:00 AM – 5:00 PM PST.

Section 2: Installation Instructions

Step 1: Preparing Fender Well for Best Tire Clearance

After Installing your rear JK fenders you may choose to trim the excess stock metal in the fender well. This trimming will allow for the best tire clearance for your JK Jeep.

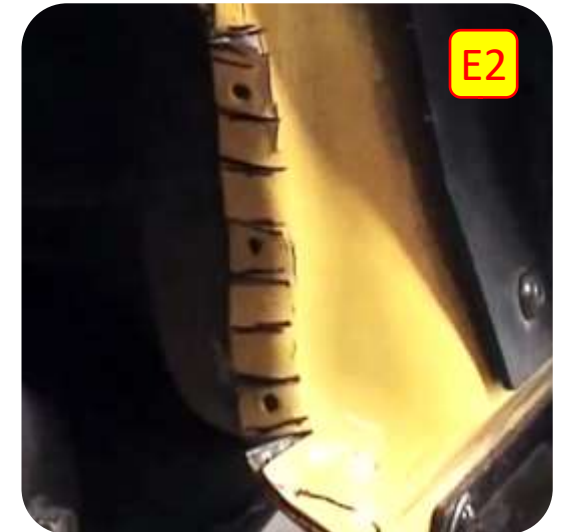
- A. Use a Marker and mark 9 areas to notch in $\frac{1}{2}$ " sections.
- B. These marks should stop right before the pinch seam in the body.
- C. Use a Marker to Mark the Lower Corner at an angle that avoids the pinch stream



Section 2: Installation Instructions

Step 2: Cutting Fender Well

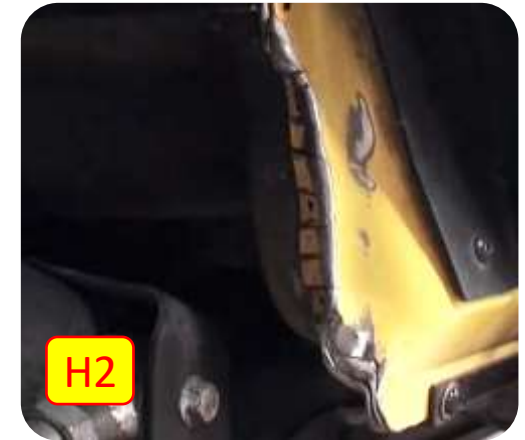
- D. Use a cut off wheel to notch the body.
- E. Pound notched sections flat into fender well.
- F. Cut corner section off.
- G. Use hammer to pound notched sections as even as possible.



Section 2: Installation Instructions

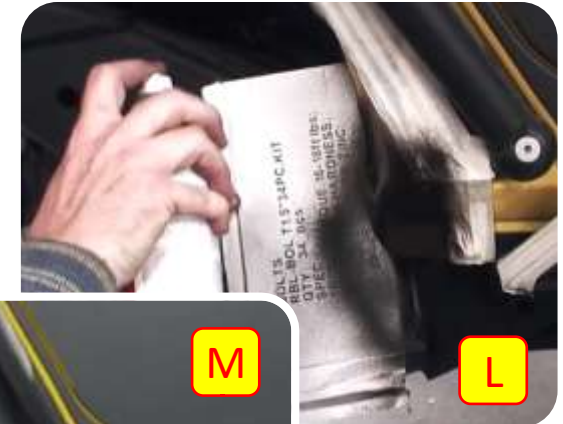
Step 3: Cutting Fender Well

H. Use grinder to smooth cut edges of fender well.



Step 4: Paint

- I. Use masking tape to cover areas that you do not want to paint.
- L. Paint with black paint and allow paint to dry.
- M. When dry peel off masking tape.



Enjoy Your Newly Added Tire Clearance!



Remember to post your pic of your Cloaked JEEP on your favorite forum and at [Facebook.com/metalcloak](https://www.facebook.com/metalcloak).