



Installation Instructions



PRODUCT: JK Rocker Rails

REV: B | 06/29/2015 | II-3310-3315

READ INSTRUCTIONS IN FULL BEFORE INSTALLATION.

QUESTIONS? CALL 916-631-8071 M-F 7:00 AM – 5:00 PM PST

The MetalCloak experience includes the ease of installation of our products. We design for most contingencies, but installation may be different based on different Jeep condition, configuration and/or year.

We are continually trying to improve our products and instructions – please help us by providing feedback and pictures if you find any part of the instructions that do not match your particular Jeep or are not easily understandable.

If you have any difficulties at all, please give us a call. Thank you and enjoy your MetalCloak Products!

IMPORTANT NOTE: We use Stainless Steel Hardware where possible. Therefore, a tube of Silver Anti-seize is provided and should be used on all bolts—only a small amount is needed.

WARRANTY INFORMATION: This article is sold without warranty expressed or implied. No warranty or representation is made as to this products ability to protect the user from injury or death. The user assumes that risk. The effectiveness, warranty and longevity of this equipment are directly related to the manner in which it is INSTALLED, USED and/or MAINTAINED. THE USER ASSUMES ALL RISK. By purchasing this product and opening the packaging, purchasers expressly acknowledge, understand and agree that they take, select and purchase these MetalCloak products from Armored Works, LLC, its affiliates and distributors and agents as is and with all faults. The entire risk as to the quality and performance of these MetalCloak products is with the purchaser. Working on your vehicle can be a dangerous activity. If you are unsure of what you are doing, please leave mechanical or safety critical work to a skilled mechanic. We take no responsibility for the incorrect use and/or installation of MetalCloak products.

Section 1: Tools & Notes on Installation

Tools Required: This list is the recommended tools for ease of installation. Other versions of the same tool can be used. For example, Allen Wrenches instead of Allen Drive Sockets.



Socket & Ratchet Wrench

9/16" Drive Socket
10mm Drive Socket
13mm Drive Sockets



25/64" or 'X' Drill
17/32" Drill

7/32" Allen Drive Socket or Wrench



Center Punch

9/16" Crescent and/or Box Wrench



Plastic Rivet Removal Tool

HOW TO USE THIS GUIDE: The installation guide contains ALL steps for installation. Please read and follow the instructions in order of each page top to bottom, and left to right.

Jeep Model: Instructions may apply to multiple Jeep models, but are labeled separately where appropriate (i.e. TJ vs. LJ).

Options: Because of the number of component options we offer, these instructions may contain steps that will not match your particular configuration. You can skip these steps.

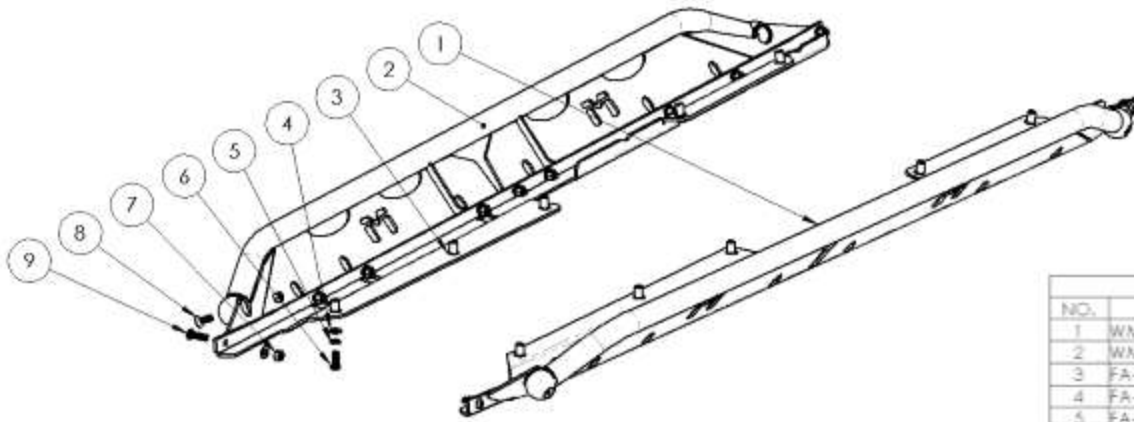
Images: Pictures are provided and parts are labeled throughout the instructions. Each text box contains guidance based on the pictures next to it. The text will refer to alphabetical labels (A, B, etc.) found in the images.

Installation Notes: Terms may be used in the body of the instructions that you may not be familiar with, if you have any questions feel free to contact us at the number below, or email techhelp@metalcloak.com

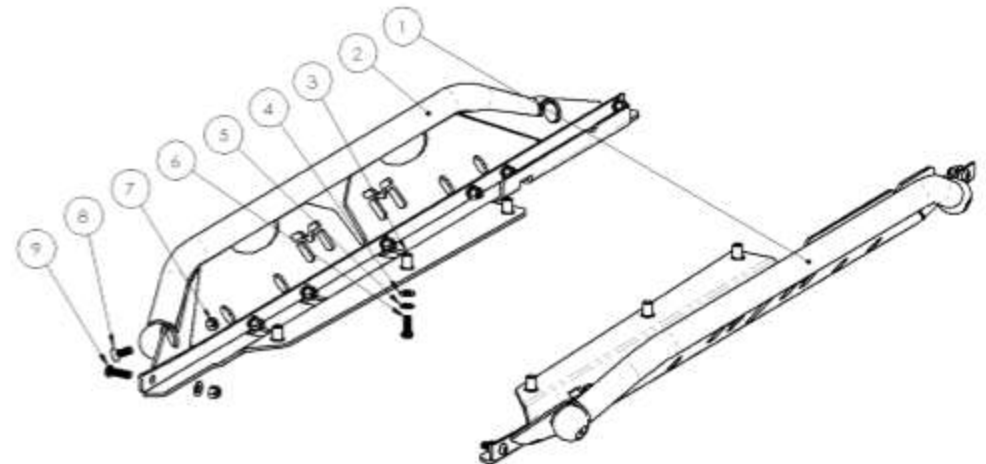
QUESTIONS: Any questions or comments about the instructions? Call us at 916-631-8071 M-F 7:00 AM – 5:00 PM PST.

Section 2: Product Components

| 3315 ROCKER RAIL, JK UNLIMITED | | |
|--------------------------------|---|------|
| NO. | PART NUMBER/DESCRIPTION | QTY. |
| 1 | WM-3000 WELDMENT, ROCKER STEP, JK UNL | 1 |
| 2 | WM-3000-P WELDMENT, ROCKER STEP, JK UNL | 1 |
| 3 | FA-0057 RIVET NUT, .375-16 OPEN END ZYC PLTD | 10 |
| 4 | FA-0009 WASHER, .41ID X .81OD X .051TH 18-8 SS SAE | 28 |
| 5 | FA-0059 LOCK WASHER, .375 INT TOOTH ZNC PLTD | 10 |
| 6 | FA-0018-BZ SBHCSCREW, .375-16x1.0L GR 8 BLACK ZINC | 26 |
| 7 | FA-0053 HEX NYL LOCKNUT .375-16 .45TH ZNC PLT STL | 22 |
| 8 | FA-0040 SFHCSCREW .375-16 x 1L 18-8 SS | 4 |
| 9 | FA-0005-BZ SBHCSCREW, .375-16x1.25L GR 8 BLACK ZINC | 2 |



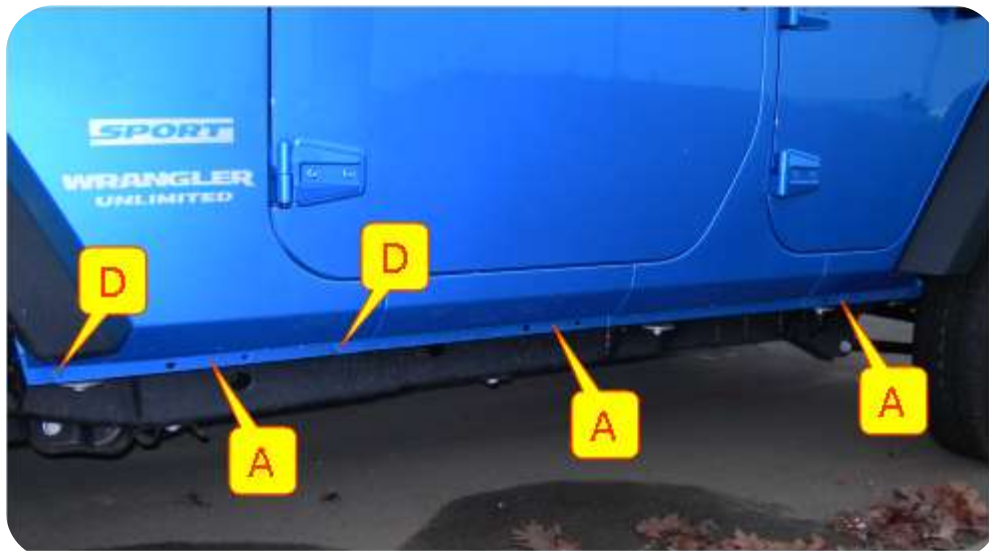
| 3310 ROCKER RAIL, JK | | |
|----------------------|---|------|
| NO. | PART NUMBER/DESCRIPTION | QTY. |
| 1 | WM-3001 WELDMENT, ROCKER STEP, JK | 1 |
| 2 | WM-3001-P WELDMENT, ROCKER STEP, JK | 1 |
| 3 | FA-0057 RIVET NUT, .375-16 OPEN END ZYC PLTD | 6 |
| 4 | FA-0009 WASHER, .41ID X .81OD X .051TH 18-8 SS SAE | 20 |
| 5 | FA-0059 LOCK WASHER, .375 INT TOOTH ZNC PLTD | 6 |
| 6 | FA-0018-BZ SBHCSCREW, .375-16x1.0L GR 8 BLACK ZINC | 18 |
| 7 | FA-0053 HEX NYL LOCKNUT .375-16 .45TH ZNC PLT STL | 18 |
| 8 | FA-0040 SFHCSCREW .375-16 x 1L 18-8 SS | 4 |
| 9 | FA-0005-BZ SBHCSCREW, .375-16x1.25L GR 8 BLACK ZINC | 2 |



Section 3: Installation Instruction

Step 1: Remove Stock Fender and Inner Fender Well

If your JK or JK Unlimited has a stock rocker, remove the rocker. You will need a 10MM Socket for the M6 Nuts, and a 13MM Socket for the M8 Screws. On the JK there are 2 positions with 2-M6 Nuts and 1-M8 Screw, and on the Unlimited there is a 3rd location [A]. *SAVE ALL HARDWARE.* On Jeep models that do not come with a stock rocker (as shown below) the underside holes may be covered.



Step 2: Mark and Drill Tub

If your Jeep did not come with a stock rocker, you will first need to install the provided 3/8"-16 Rivet Nuts in the stock holes on the underside of the tub [I]. Drill the front stock holes [B] open to 17/32". On the Unlimited, drill the stock threaded nut [C] in the rear and replace it with a 3/8" Rivet Nut (start with a smaller drill and step up to 17/32").

If your Jeep did not come with a stock rocker, you will first need to install the provided 3/8"-16 Rivet Nuts in the stock holes on the underside of the tub [●]. Drill the front stock holes [B] open to 17/32". On the Unlimited, drill the stock threaded nut [C] in the rear and replace it with a 3/8" Rivet Nut (start with a smaller drill and step up to 17/32").

Section 3: Installation Instruction

Step 2: Mark and Drill Tub

Using just the stock locations [B, C, D from previous page] loosely bolt the MetalCloak Rocker in place. Re-use the stock hardware where desired, or use 3/8"-16 x 1" Socket Button Screws in the installed Rivet Nuts. *IMPORTANT NOTE: we also recommend that you use a hydraulic jack and/or clamps to firmly press the Rocker against the tub and stock rail.* Once in position, mark all holes that need to be drilled with a permanent marker or Sheet Metal Punch. Don't forget the locations on the underside of the tub for additional Rivet Nuts [●].

Drill open all locations on the stock rail to 25/64" [■], and the bottom locations to 17/32" [●]. STEP UP IN DRILL SIZE when drilling the underside locations for the additional Rivet Nuts; do not start with a 17/32" drill as the large drill can catch and tear the sheet metal, causing your final hole location to be off-center.



Completely remove the Rocker. Install the additional 3/8" Rivet Nuts on the underside of the tub. Paint any exposed metal with an automotive grade primer or touch-up paint matched to your paint color.

OPTIONAL STEP: if desired, you can also paint all stock rocker surfaces with an automotive, rubberized sealant prior to final installation—this will provide additional rust protection, and prevent future scratching from vibration.

Section 3: Installation Instruction

Step 3: Align Drill Template & Mark Holes to Be Drilled

IMPORTANT STEP!

While your paint is drying, use a 7/32" Hex Driver and 9/16" Socket to install the 3/8"-16 x 0.75" Socket Countersunk Screws [E] in the 'ball' features of Rocker. This hardware is solely cosmetic, so you only need the 3/8"-16 Nylon Lock Nut; no washers are necessary. **DO NOT SKIP THIS STEP! YOU CANNOT INSTALL THIS HARDWARE ONCE THE ROCKER IS INSTALLED.**



Use 7/32" Hex Driver and 9/16" Wrench to install Rocker using the 3/8"-16 x 1" Socket Button Screws. On the stock rail, the Screws are backed by 3/8" Washers and Nylon Lock Nuts [■]. A 3/8"-16 x 1.25" Socket Button Screw is provided for the furthest forward location [F] in case you drilled the stock M6 nut, and are installing the MetalCloak Overline Fenders. On the underside re-use the stock hardware where desired, but an additional 3/8" Lock Washer is included for use with the Screws in all positions where a Rivet Nut was potentially installed [●]. Fully tighten all hardware.

