



Installation Instructions



PRODUCT: JK UnderCloak Integrated Armor System

REV: D | 08-11-2021 | II-3365-3368

READ INSTRUCTIONS IN FULL BEFORE INSTALLATION.

QUESTIONS? CALL 916-631-8071 M-F 7:00 AM – 5:00 PM PST

The MetalCloak experience includes the ease of installation of our products. We design for most contingencies, but installation may be different based on different Jeep condition, configuration and/or year.

We are continually trying to improve our products and instructions – please help us by providing feedback and pictures if you find any part of the instructions that do not match your particular Jeep or are not easily understandable.

If you have any difficulties at all, please give us a call. Thank you and enjoy your MetalCloak Products!

IMPORTANT NOTE: We use Stainless Steel Hardware where possible. Therefore, a tube of Silver Anti-seize is provided and should be used on all bolts—only a small amount is needed.

WARRANTY INFORMATION: This article is sold without warranty expressed or implied. No warranty or representation is made as to this products ability to protect the user from injury or death. The user assumes that risk. The effectiveness, warranty and longevity of this equipment are directly related to the manner in which it is INSTALLED, USED and/or MAINTAINED. THE USER ASSUMES ALL RISK. By purchasing this product and opening the packaging, purchasers expressly acknowledge, understand and agree that they take, select and purchase these MetalCloak products from Armored Works, LLC, its affiliates and distributors and agents as is and with all faults. The entire risk as to the quality and performance of these MetalCloak products is with the purchaser. Working on your vehicle can be a dangerous activity. If you are unsure of what you are doing, please leave mechanical or safety critical work to a skilled mechanic. We take no responsibility for the incorrect use and/or installation of MetalCloak products.

Section 1: Tools & Notes on Installation

Tools Required: This list is the recommended tools for ease of installation. Other versions of the same tool can be used. For example, Allen Wrenches instead of Allen Drive Sockets.



Socket & Ratchet Wrench

16mm Socket/Wrench
18mm Socket/Wrench
19mm Socket/Wrench
9/16" Socket/Wrench



Drill

3/8" Drill Bit
11/16" Drill Bit



5/16" Allen Socket or wrench

HOW TO USE THIS GUIDE: The installation guide contains ALL steps for installation. Please read and follow the instructions in order of each page top to bottom, and left to right.

Jeep Model: Instructions may apply to multiple Jeep models, but are labeled separately where appropriate (i.e. TJ vs. LJ).

Options: Because of the number of component options we offer, these instructions may contain steps that will not match your particular configuration. You can skip these steps.

Images: Pictures are provided and parts are labeled throughout the instructions. Each text box contains guidance based on the pictures next to it. The text will refer to alphabetical labels (A, B, etc.) found in the images.

Installation Notes: Terms may be used in the body of the instructions that you may not be familiar with, if you have any questions feel free to contact us at the number below, or email techhelp@metalcloak.com

QUESTIONS: Any questions or comments about the instructions? Call us at 916-631-8071 M-F 7:00 AM – 5:00 PM PST.

Section 2: Product Components

DC-0001 REV A

SHEET 1 OF 1

ITEM	PART NUMBER/DESCRIPTION	QTY.
1	3359 CROSSMEMBER KIT, JK	1
2	3360 MOTOR SKID PLATE KIT, EARLY JK	1
3	3362 TRANSMISSION SKID PLATE KIT, JK	1
4	3363 GAS TANK SKID PLATE KIT, JK	1

THE INFORMATION CONTAINED ON THIS DRAWING IS THE EXCLUSIVE PROPERTY OF ARMORED WORKS, LLC. UNAUTHORIZED REPRODUCTION IS PROHIBITED.
DO NOT SCALE DRAWING

METAL CLOAK
 A DIVISION OF ARMORED WORKS, LLC

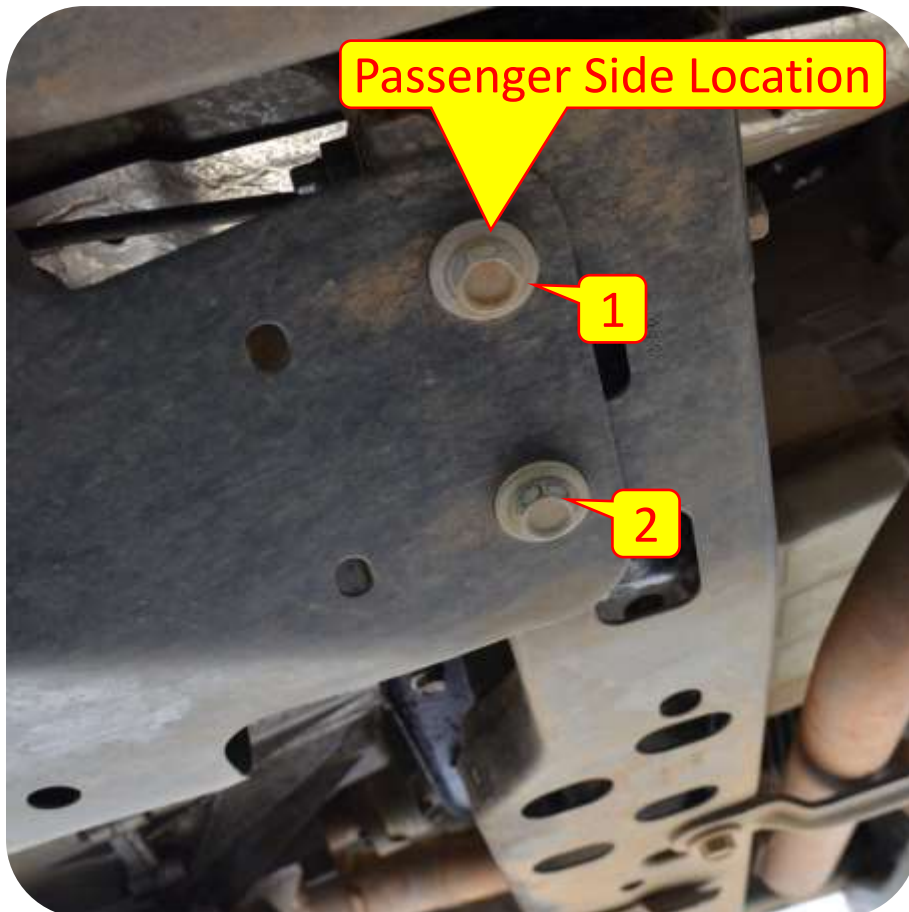
PART NUMBER/DESCRIPTION 3365 SKID PLATE SYSTEM, EARLY JK

Section 3: Installation Instructions



Step 1: Cross Member

Important Note: *If you do not have a Rubicon model. Hang on to these 2 bolts. Depending on year and model you may need to install them into the MetalCloak skid plate system. One goes on the Driver Side one on the passenger side. In some cases.*

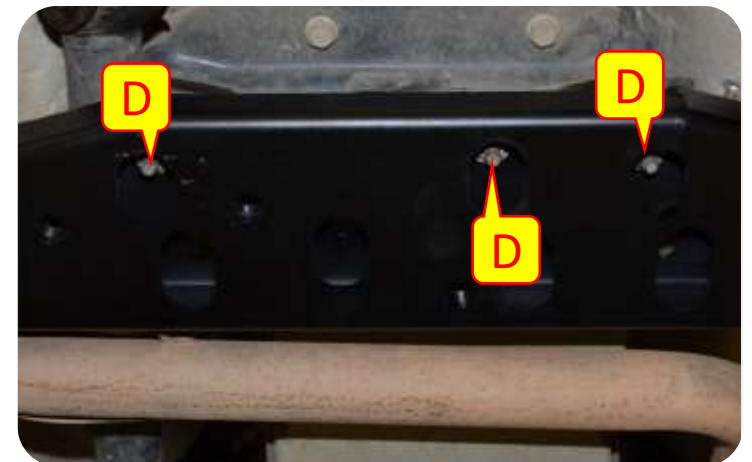
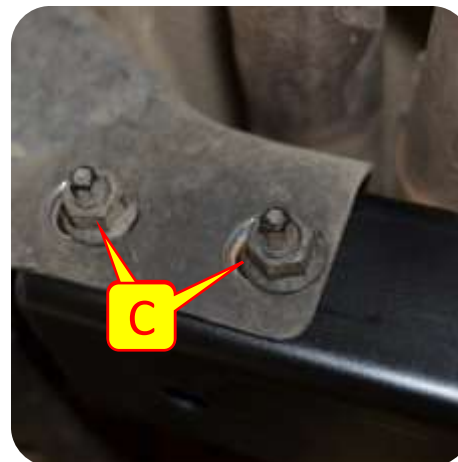


Section 3: Installation Instructions

Step 1: Cross Member

Important Note: *Support the transfer case before unbolting the factory cross member.*

- A. Detach factory cross member from the frame using a 18mm socket. **Keep all hardware.**
- B. Disconnect the cross member from the transmission using a 16mm socket. **Keep all hardware.**
- C. Install the new MetalCloak cross member at the frame using the factory bolts and a 18mm socket.
- D. Install the factory bolts into the transmission using a 16mm socket into the new MetalCloak cross member.
- E. Tighten down all bolts



Section 3: Installation Instructions

Step 2: Gas Tank Skid Plate

F. Align the gas tank skid plate holes with the frame and install the gas tank skid using the stock gas tank skid liner hardware (18mm). **Keep factory gas tank liner installed.**

G. Drill out the 3 holes on the gas tank skid through the factory gas tank skid liner using a 3/8" drill bit.

Note: For easier access to drill out the hole and install a bolt by the rear drive shaft. Use a jack stand and push the gas tank skid plate up to clear the rear drive shaft.

H. Install the provided nuts and bolts into the drilled out holes and tighten using a 9/16" wrench and socket.



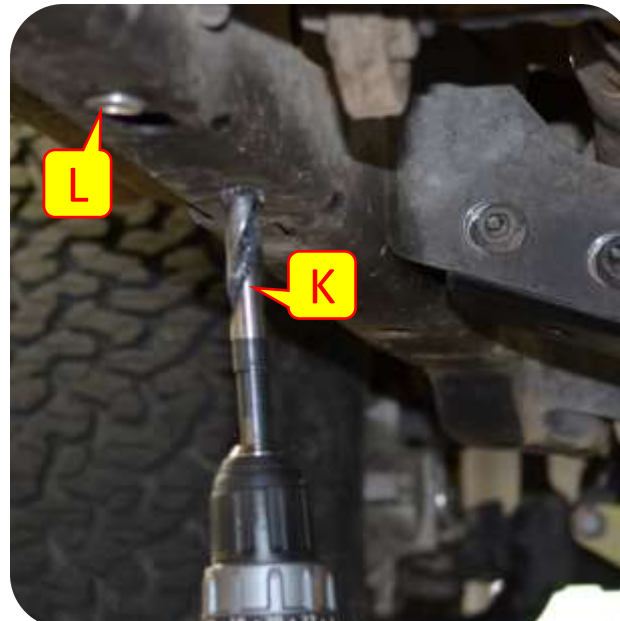
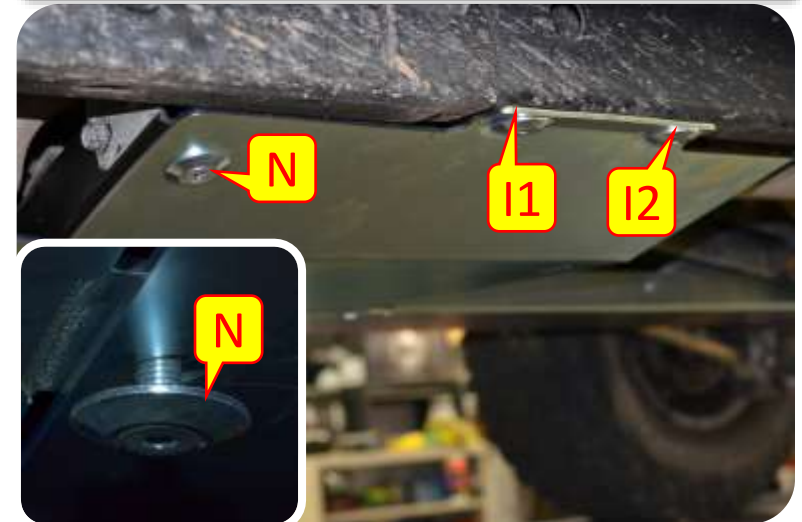
Note: For easier access when drilling out the hole on the passenger side of the gas tank skid: Remove the rear passenger tire. (This is not necessary)

Section 3: Installation Instructions

Step 3: Transmission & Transfer Case Skid Plate

- I. Install the transmission & transfer case skid plate aligning the holes on the driver side frame rail and mark holes for drilling.
- J. Remove the clip on the driver side frame rail.
- K. Drill out the driver side frame rail stepping up to a 11/16" drill bit.
- L. Install the rivet nuts with the provided installation tool.
- M. Install the provided tapered bolts and washers into the rivet nuts. **DO NOT TIGHTEN.**
- N. Install a tapered bolt and washer into the MetalCloak Cross member and connect the Transfer case skid to the gas tank skid using tapered washers and bolts. **DO NOT TIGHTEN.**

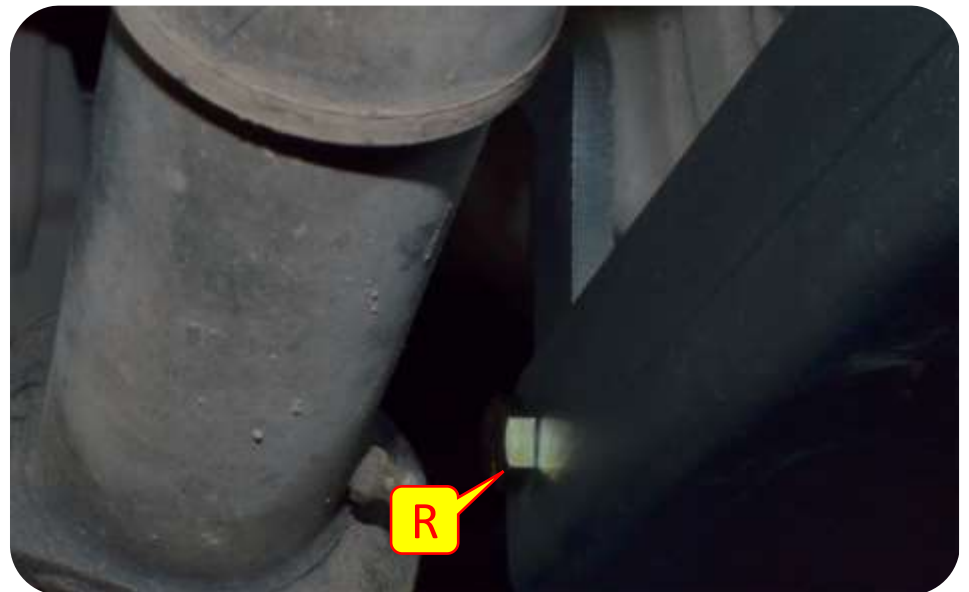
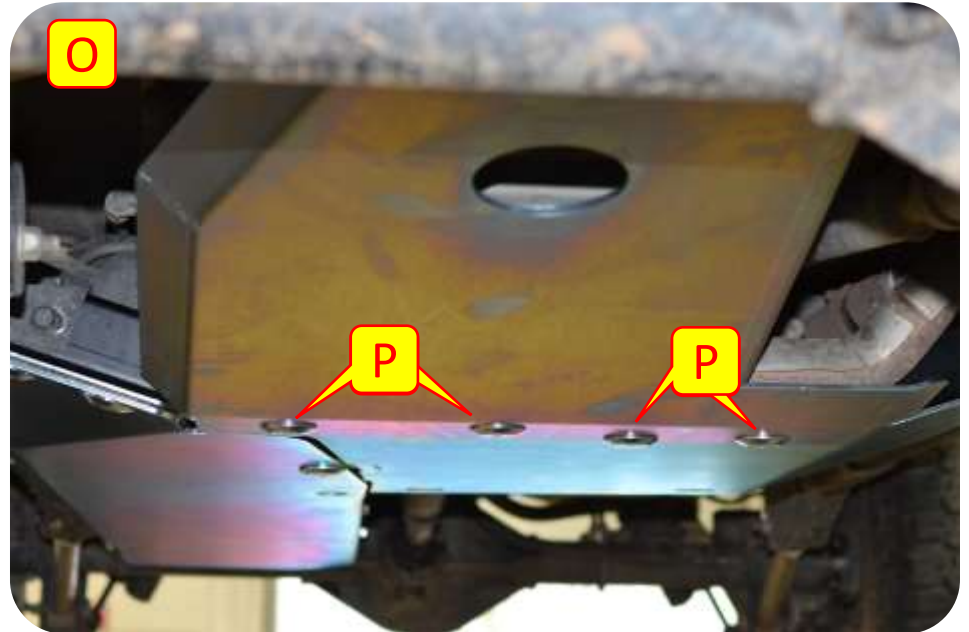
Note: Some models come with a built-in nut (I2). If you have a built-in nut (I2), there is no need to drill out the hole as we provide a M12 bolt.



Section 3: Installation Instructions

Step 4: Oil Pan and Motor Skid Plate

- O. Install the oil pan and motor skid plate aligning the back holes with the transmission and transfer case skid.
- P. Install the 4 tapered bolts and washers in the back holes. **DO NOT TIGHTEN.**
- Q. Install the rounded end of the gusset straps (*front upper*) on top of the motor mount bracket with the provided hardware. **DO NOT TIGHTEN.**
- R. Install the square end (*front lower*) of the gusset. Depending on clearance you may install the support brackets to the outside of the oil pan skid or to the inside; be sure to check for driveshaft clearance.



Section 3: Installation Instructions

Step 4: Oil Pan and Motor Skid Plate

- S. Using a 19mm wrench and socket tighten the gusset straps.
- T. Install the remaining tapered bolts and washers on the gas tank skid plate into the cross member.
- U. Tighten down the tapered bolts using a 5/16" allen socket.
- V. Make sure all bolts are tight.

