



Installation Instructions



PRODUCT: JK Hardline Rear Flares

REV: B | 08-21-2015 | II-3405

**READ INSTRUCTIONS IN FULL BEFORE INSTALLATION.
QUESTIONS? CALL 916-631-8071 M-F 7:00 AM – 5:00 PM PST**

The MetalCloak experience includes the ease of installation of our products. We design for most contingencies, but installation may be different based on different Jeep condition, configuration and/or year.

We are continually trying to improve our products and instructions – please help us by providing feedback and pictures if you find any part of the instructions that do not match your particular Jeep or are not easily understandable.

If you have any difficulties at all, please give us a call. Thank you and enjoy your MetalCloak Products!

IMPORTANT NOTE: We use Stainless Steel Hardware where possible. Therefore, a tube of Silver Anti-seize is provided and should be used on all bolts—only a small amount is needed.

WARRANTY INFORMATION: This article is sold without warranty expressed or implied. No warranty or representation is made as to this products ability to protect the user from injury or death. The user assumes that risk. The effectiveness, warranty and longevity of this equipment are directly related to the manner in which it is INSTALLED, USED and/or MAINTAINED. THE USER ASSUMES ALL RISK. By purchasing this product and opening the packaging, purchasers expressly acknowledge, understand and agree that they take, select and purchase these MetalCloak products from Armored Works, LLC, its affiliates and distributors and agents as is and with all faults. The entire risk as to the quality and performance of these MetalCloak products is with the purchaser. Working on your vehicle can be a dangerous activity. If you are unsure of what you are doing, please leave mechanical or safety critical work to a skilled mechanic. We take no responsibility for the incorrect use and/or installation of MetalCloak products.

Section 1: Tools & Notes on Installation

Tools Required: This list is the recommended tools for ease of installation. Other versions of the same tool can be used. For example, Allen Wrenches instead of Allen Drive Sockets.



Socket & Ratchet Wrench

10mm Hex Drive Socket



1/4" Drill Bit
7/16" Drill Bit
17/32" Drill Bit

7/32" Allen Drive Socket or Wrench



Center Punch

7/16" Box Wrench



Plastic Rivet Removal Tool
or Flat-head Screwdriver

Needle-nose Pliers



HOW TO USE THIS GUIDE: The installation guide contains ALL steps for installation. Please read and follow the instructions in order of each page from top to bottom, and left to right.

Jeep Model: Instructions may apply to multiple Jeep models, but are labeled separately where appropriate (i.e. TJ vs. LJ).

Options: Because of the number of component options we offer, these instructions may contain steps that will not match your particular configuration. You can skip these steps.

Images: Pictures are provided and parts are labeled throughout the instructions. Each text box contains guidance based on the pictures next to it. The text will refer to alphabetical labels (A, B, etc.) found in the images.

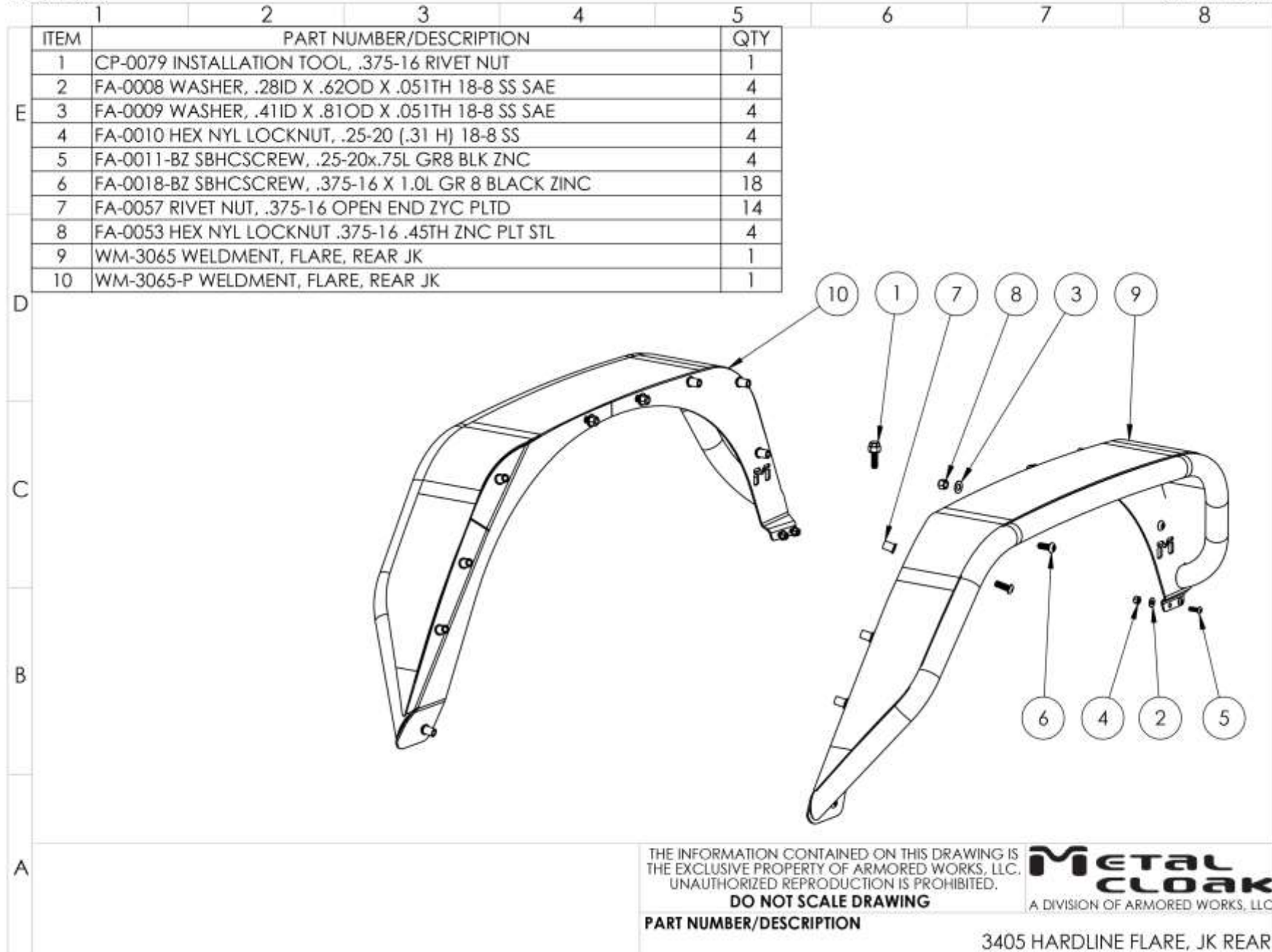
Installation Notes: Terms may be used in the body of the instructions that you may not be familiar with, if you have any questions feel free to contact us at the number below, or email techhelp@metalcloak.com

QUESTIONS: Any questions or comments about the instructions? Call us at 916-631-8071 M-F 7:00 AM – 5:00 PM PST.

Section 2: Product Components

DC-0001 REV A

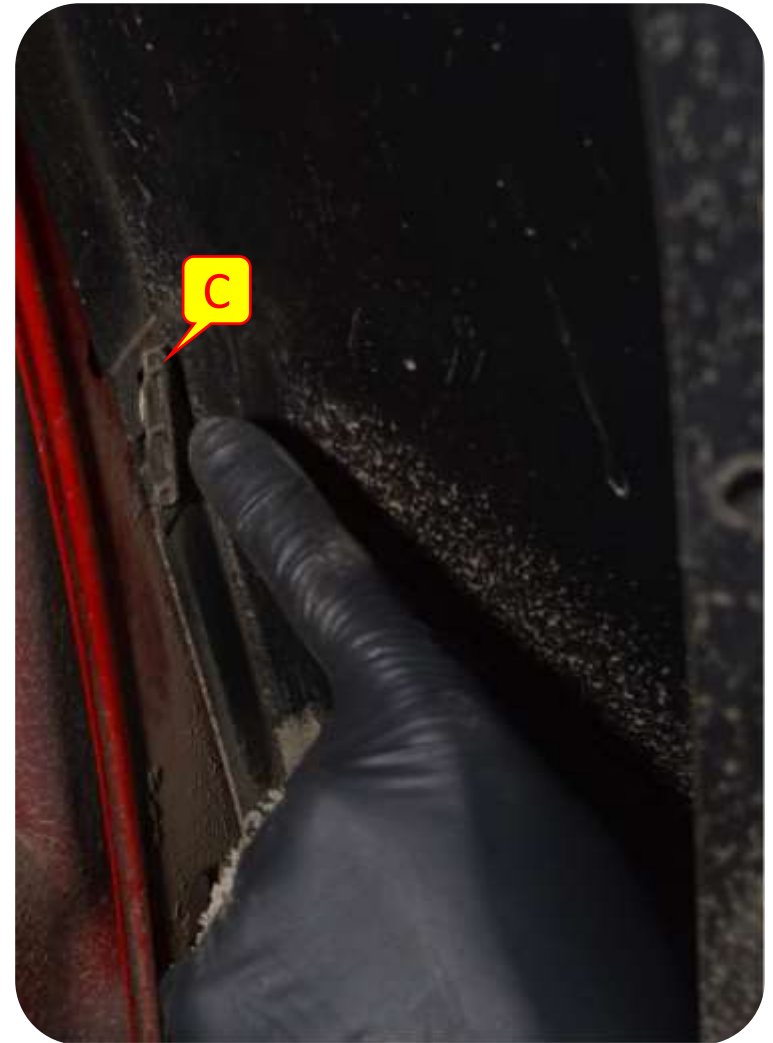
SHEET 1 OF 1



Section 3: Installation Instructions

Step 1: Remove Rear Stock Fender and Inner Fender Well

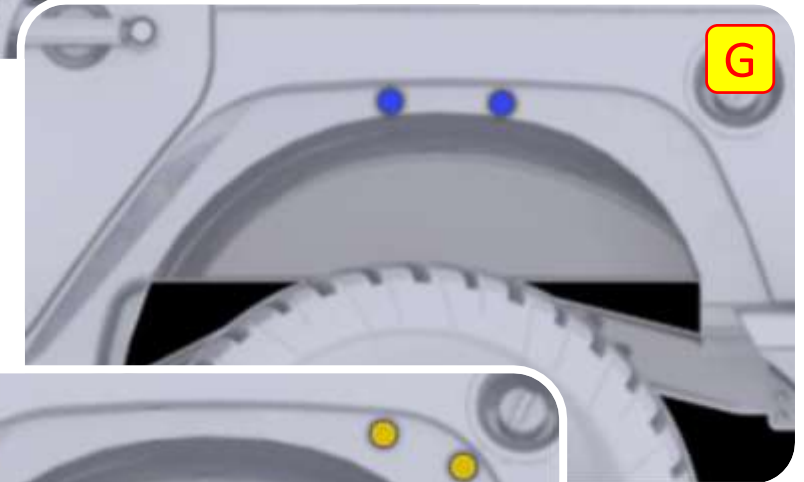
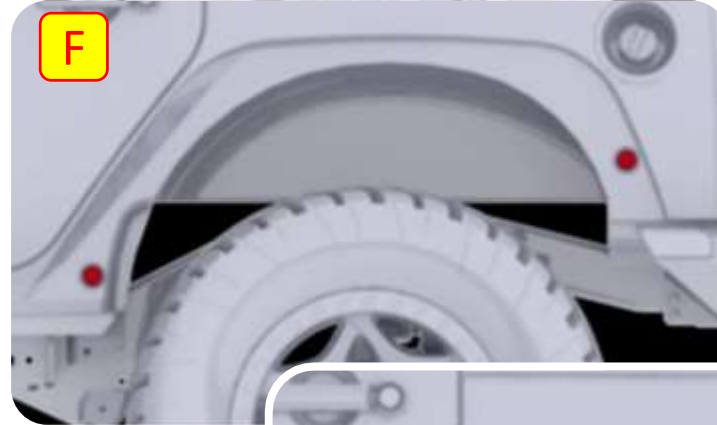
- A. Remove the plastic rivets. You may choose to cut these off if you do not have a Plastic Rivet Removal Tool readily available.
- B. Pull the flares up and away from the jeep, working from one end of the flare to the other.
- C. Remove the remaining plastic clips with a pair of needs nose pliers



Note: Do not be concerned if you break some clips in the process, you will not need them.

Section 3: Installation Instructions

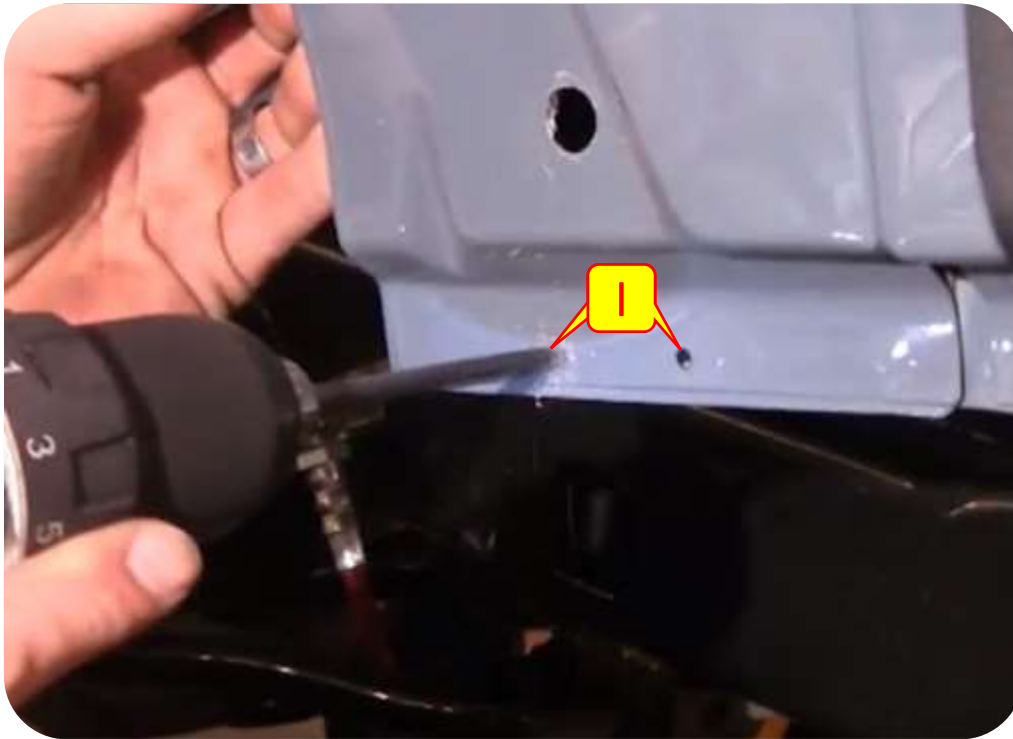
Step 2: Rear Hardline Fender Installation



- E. Align the Hardline Fender with the stock holes. Thread as many 3/8" Button Head Bolts into the stock holes as possible
- F. Mark the two new holes to be drilled for Rivet Nuts, one in front and one in the rear. Center punch these holes, start with a 1/8" drill and step up in size to 17/32".
- G. The two center holes will be backed by a Nut/Washer and can be drilled to 7/16".
- H. All other stock holes need to be drilled for a Rivet Nut using a 17/32" drill

Section 3: Installation Instructions

Step 2: Rear Hardline Fender Installation



- I. The lower two holes at the rear of the Fender need to be drilled to 1/4", and the provided hardware installed. The washer backs the nut on the inside of the sheet metal. The easiest way to do this is to pry the plastic bumper out of the way and use a long 1/4" drill to drill the holes, using the Fender holes as a guide. You can also loosen all the hardware on the bumper and pull it out of the way. This hardware is important for the strength of the product and this step should not be skipped, even if you have an aftermarket bumper that makes this area difficult to access.
- J. Install the Rivet Nuts in the holes that have been opened and created making sure that when installing the Rivet Nuts you set them exactly perpendicular to the sheet metal.

Section 3: Installation Instructions



Step 2: Rear Hardline Fender Installation

- K. Install and tighten the Fender using the provided 3/8" hardware; start all hardware before fully tightening any bolts. You may need to push and pry a little to get everything started as it is a very tight fit. An Allen Drive with a "ball-style" end is helpful for reaching a few of the bolts

