



Installation Instructions



PRODUCT: Shock Relocation & Clearance Kit

REV: B | 06-25-2015 | II-7025

READ INSTRUCTIONS IN FULL BEFORE INSTALLATION.

QUESTIONS? CALL 916-631-8071 M-F 7:00 AM – 5:00 PM PST

The MetalCloak experience includes the ease of installation of our products. We design for most contingencies, but installation may be different based on different Jeep condition, configuration and/or year.

We are continually trying to improve our products and instructions – please help us by providing feedback and pictures if you find any part of the instructions that do not match your particular Jeep or are not easily understandable.

If you have any difficulties at all, please give us a call. Thank you and enjoy your MetalCloak Products!

IMPORTANT NOTE: We use Stainless Steel Hardware where possible. Therefore, a tube of Silver Anti-seize is provided and should be used on all bolts—only a small amount is needed.

WARRANTY INFORMATION: This article is sold without warranty expressed or implied. No warranty or representation is made as to this products ability to protect the user from injury or death. The user assumes that risk. The effectiveness, warranty and longevity of this equipment are directly related to the manner in which it is INSTALLED, USED and/or MAINTAINED. THE USER ASSUMES ALL RISK. By purchasing this product and opening the packaging, purchasers expressly acknowledge, understand and agree that they take, select and purchase these MetalCloak products from Armored Works, LLC, its affiliates and distributors and agents as is and with all faults. The entire risk as to the quality and performance of these MetalCloak products is with the purchaser. Working on your vehicle can be a dangerous activity. If you are unsure of what you are doing, please leave mechanical or safety critical work to a skilled mechanic. We take no responsibility for the incorrect use and/or installation of MetalCloak products.

Section 1: Tools & Notes on Installation



Tools Required: This list is the recommended tools for ease of installation. Other versions of the same tool can be used. For example, Allen Wrenches instead of Allen Drive Sockets.



Electric Drill

17mm Hex Socket
18mm Hex Socket
19mm Hex Socket
9/16" Hex Socket



1/4" Drill Bit
7/16" Drill Bit

Socket & Ratchet Wrench



Cut-Off Disc and Grinder
(Optional)

HOW TO USE THIS GUIDE: The installation guide contains ALL steps for installation. Please read and follow the instructions in order of each page top to bottom, and left to right.

Jeep Model: Instructions may apply to multiple Jeep models, but are labeled separately where appropriate (i.e. TJ vs. LJ).

Options: Because of the number of component options we offer, these instructions may contain steps that will not match your particular configuration. You can skip these steps.

Images: Pictures are provided and parts are labeled throughout the instructions. Each text box contains guidance based on the pictures next to it. The text will refer to alphabetical labels (A, B, etc) found in the images.

Installation Notes: Terms may be used in the body of the instructions that you may not be familiar with, if you have any questions feel free to contact us at the number below, or email techhelp@metalcloak.com

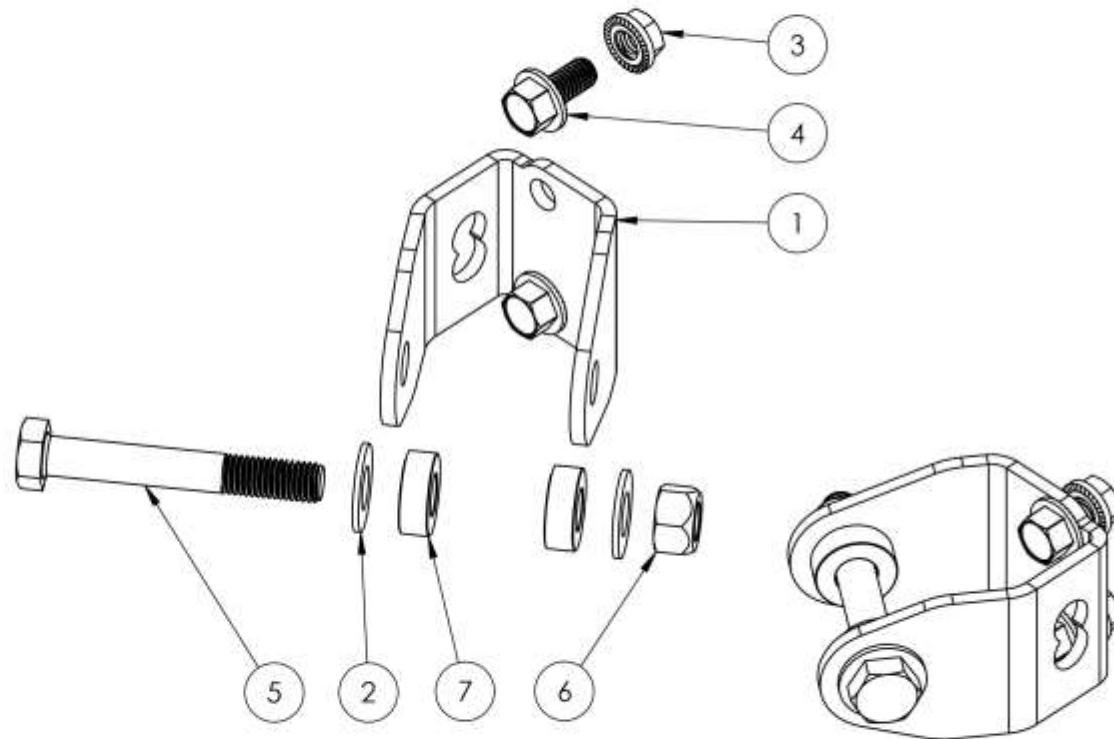
QUESTIONS: Any questions or comments about the instructions? Call us at 916-631-8071 M-F 7:00 AM – 5:00 PM PST

Section 2: Product Components

DC-0001 REV A

SHEET 1 OF 1

| ITEM | PART NUMBER/DESCRIPTION | QTY |
|------|--|-----|
| 1 | CP-3704 SHOCK MOUNT BRACKET, JK REAR | 2 |
| 2 | FA-0038 WASHER, .53ID X 1.06OD X .074TH ZNC PLT | 4 |
| 3 | FA-0090 FLANGE NUT, .375-16 SERRATED ZINC | 4 |
| 4 | FA-2009 HHCS SERRATED FLANGE, .375-16 X .75 GR 5 ZINC | 4 |
| 5 | FA-2045 HHCS, M12-1.75 X 85L CLASS 10.9 ZINC PLTD | 2 |
| 6 | FA-2046 HEX LOCK NUT, M12-1.75 X 12TH CLASS 10.9 ZINC PLTD | 2 |
| 7 | FA-2055 SPACER, TUBE .51D X 1.00D X .35TH ZNC PLT STL | 4 |



THE INFORMATION CONTAINED ON THIS DRAWING IS THE EXCLUSIVE PROPERTY OF ARMORED WORKS, LLC. UNAUTHORIZED REPRODUCTION IS PROHIBITED. DO NOT SCALE DRAWING

Metal Cloak
A DIVISION OF ARMORED WORKS, LLC

PART NUMBER
DESCRIPTION

7025 STOCK SHOCK MOUNT KIT, JK LOWER REAR

Section 3: Installation Instructions

Important Note: To install lift components you may need to 'droop' your suspension it is strongly recommended the vehicle be placed on an automotive lift and that all appropriate safety precautions be taken to properly secure the vehicle. always use axle stands to support the axle when the suspension components are disconnected to ensure the integrity of your suspension system during the installation process.

Step 1: Remove Stock Components

- A. Remove the stock shock using a 19mm Socket and Ratchet to remove the lower bolt, and a 17mm Socket to remove the upper shock mount bolts.
- B. Use an 18mm Hex Socket and Ratchet to remove the bolt that attaches the sway-bar link to the axle.



Section 3: Installation Instructions

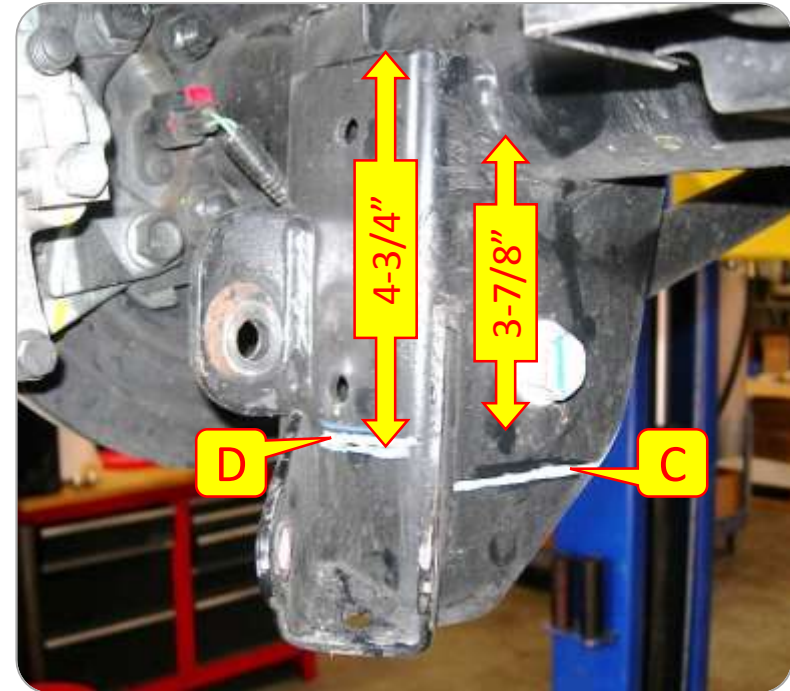


Important Note: *The following instructions are only for use with 6pak shocks. If you are not installing 6pak shocks please continue on to Step 3.*

Section 3: Installation Instructions

Step 2: Trimming Lower Stock Shock Mount Bracket.

- C. Mark the side of the Lower Stock Shock Mount Bracket **3-7/8"** from the bottom of the axle.
- D. Mark the rear of the Lower Stock Shock Mount Bracket **4-3/4"** from the top of the bracket.
- E. Use a Cut-off Disc and Grinder to trim the Stock Shock Mount Bracket, including any protruding portion above the marked locations. Blend the transition as shown and paint exposed metal.



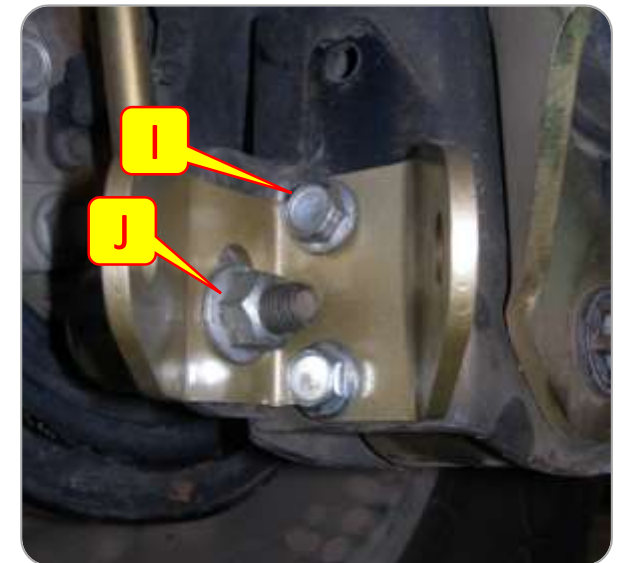
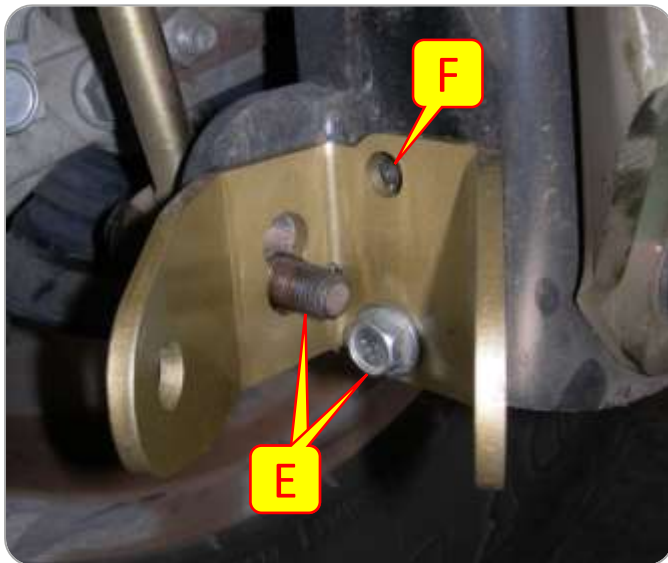
Section 3: Installation Instructions



Step 3: Install Shock Mount Bracket

- F. Locate the MetalCloak Lower Shock Mount Bracket (Bracket is symmetrical and can be reversed for Driver and Passenger Side) using the stock holes. The lower hole of the “figure 8” opening of the Shock Mount Bracket aligns with the stock sway bar link hole as shown.
- G. Mark the upper hole on the Shock Mount Bracket to be drilled.
- H. Remove Shock Mount Bracket and drill marked hole with a 7/16” Drill. The axel mount is made from a very hard steel, and we recommend drilling a 1/4” (or similar) pilot hole first.
- I. Install the 3/8”-16 Flange Hex Head Screws and Nuts using a 9/16” Socket and Wrench.
- J. Reinstall the stock sway bar link bolt. Fully tighten all hardware.

Important Note: Depending on your suspension setup, you may need to leave the sway bar links disconnected until after the shock installation.



Section 3: Installation Instructions

Step 3: Install Shock

- K. Install the rear shock to the new shock mount using the provided bolt.
- L. Slip on a washer.
- M. Slide bolt through one side of the bracket.
- N. Add first spacer.
- O. Slide shock onto bolt.
- P. Add second spacer.
- Q. Slip bolt through second part of bracket.
- R. Add second washer and nut.
- S. Tighten bolt.

