



PRODUCT: TJ Front Track Bar

REV: F | 01-16-2020 | II-7035

**READ INSTRUCTIONS IN FULL BEFORE INSTALLATION.
QUESTIONS? CALL 916-631-8071 M-F 7:00 AM – 5:00 PM PST**

The MetalCloak experience includes the ease of installation of our products. We design for most contingencies, but installation may be different based on different Jeep condition, configuration and/or year.

We are continually trying to improve our products and instructions – please help us by providing feedback and pictures if you find any part of the instructions that do not match your particular Jeep or are not easily understandable.

If you have any difficulties at all, please give us a call. Thank you and enjoy your MetalCloak Products!

IMPORTANT NOTE: We use Stainless Steel Hardware where possible. Therefore, a tube of Silver Anti-seize is provided and should be used on all bolts—only a small amount is needed.

WARRANTY INFORMATION: This article is sold without warranty expressed or implied. No warranty or representation is made as to this products ability to protect the user from injury or death. The user assumes that risk. The effectiveness, warranty and longevity of this equipment are directly related to the manner in which it is INSTALLED, USED and/or MAINTAINED. THE USER ASSUMES ALL RISK. By purchasing this product and opening the packaging, purchasers expressly acknowledge, understand and agree that they take, select and purchase these MetalCloak products from Armored Works, LLC, its affiliates and distributors and agents as is and with all faults. The entire risk as to the quality and performance of these MetalCloak products is with the purchaser. Working on your vehicle can be a dangerous activity. If you are unsure of what you are doing, please leave mechanical or safety critical work to a skilled mechanic. We take no responsibility for the incorrect use and/or installation of MetalCloak products.

Section 1: Tools & Notes on Installation



Tools Required: This list is the recommended tools for ease of installation. Other versions of the same tool can be used. For example, Allen Wrenches instead of Allen Drive Sockets. Be sure to use metric on metric and SAE on SAE.



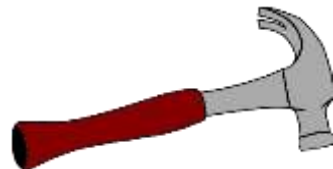
Socket & Ratchet Wrench

14mm Socket 15mm Socket
17mm Socket 15/16 Socket



Drill

5/8" Drill Bit
9/16" Drill Bit



Hammer

HOW TO USE THIS GUIDE: The installation guide contains ALL steps for installation. Please read and follow the instructions in order of each page top to bottom, and left to right.

Jeep Model: Instructions may apply to multiple Jeep models, but are labeled separately where appropriate (i.e. TJ vs. LJ).

Options: Because of the number of component options we offer, these instructions may contain steps that will not match your particular configuration. You can skip these steps.

Images: Pictures are provided and parts are labeled throughout the instructions. Each text box contains guidance based on the pictures to it. The text will refer to alphabetical labels (A, B, etc.) found in the images.

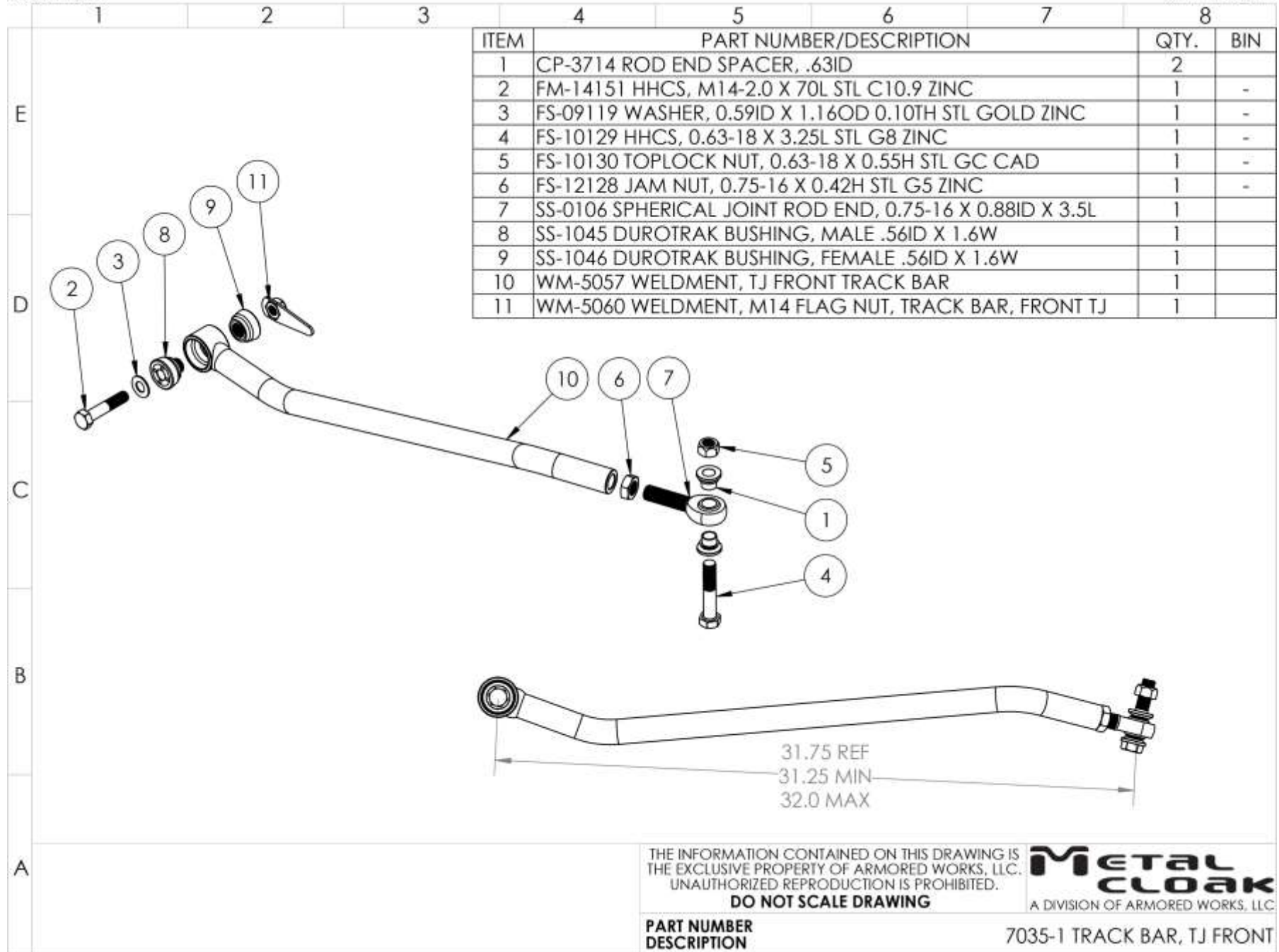
Installation Notes: Terms may be used in the body of the instructions that you may not be familiar with, if you have any questions feel free to contact us at the number below, or email techhelp@metalcloak.com

QUESTIONS: Any questions or comments about the instructions? Call us at 916-631-8071 M-F 7:00 AM – 5:00 PM PST.

Section 2: Product Components

DC-0001 REV A

SHEET 1 OF 1

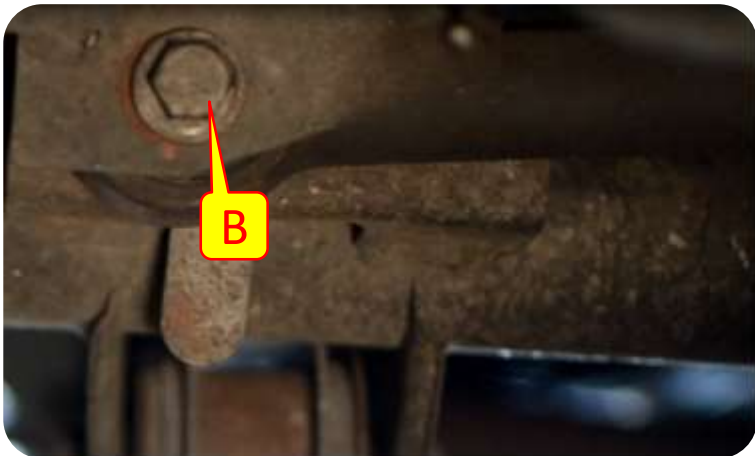


Section 3: Installation Instructions



Step 1: Remove Stock Front Track Bar

- A. Raise vehicle and support with stands.
- B. Disconnect front track bar at axle end on the passenger side using a 15mm socket.
- C. Disconnect front track bar on the driver side using a 17mm socket. Tap on the track bar with hammer or rubber mallet to release from the tapered thread.



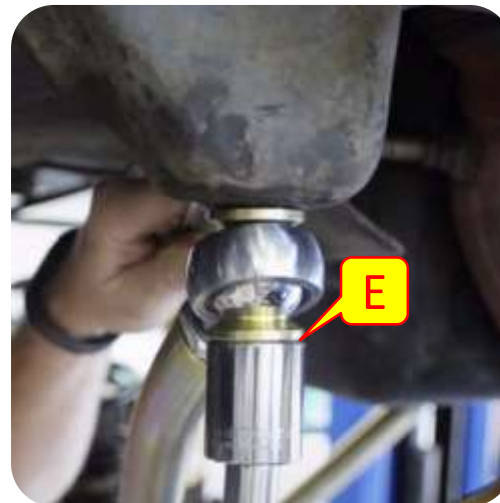
Section 3: Installation Instructions



Step 2: Install Front Tack Bar

Note: MetalCloak increased the driver and passenger side track bar frame holes to a larger diameter for additional strength.

- C. Use a 9/16 drill bit and re-drill front track bar bolt hole on the passenger side.
- D. Use a 5/8" drill bit and re-drill front track bar on driver side.
- E. Install new track on driver side using a 15/16" socket. Do not tighten track bar bolt fully.
- F. Install Passenger side of track bar. Do not tighten track bar bolt as it may need to come off to re-center axle when vehicle is lowered.
- G. Lower vehicle and re-center axle if necessary.
- H. Tighten all hardware.



Torque Specifications:

Track Bar Lower Bolt – 120-130

Track Bar Upper Bolt - 150