



PRODUCT: TJ Rear Track Bar Kit

REV: B | 06-25-2015 | II-7046

READ INSTRUCTIONS IN FULL BEFORE INSTALLATION.
QUESTIONS? CALL 916-631-8071 M-F 7:00 AM – 5:00 PM PST

The MetalCloak experience includes the ease of installation of our products. We design for most contingencies, but installation may be different based on different Jeep condition, configuration and/or year.

We are continually trying to improve our products and instructions – please help us by providing feedback and pictures if you find any part of the instructions that do not match your particular Jeep or are not easily understandable.

If you have any difficulties at all, please give us a call. Thank you and enjoy your MetalCloak Products!

IMPORTANT NOTE: We use Stainless Steel Hardware where possible. Therefore, a tube of Silver Anti-seize is provided and should be used on all bolts—only a small amount is needed.

WARRANTY INFORMATION: This article is sold without warranty expressed or implied. No warranty or representation is made as to this products ability to protect the user from injury or death. The user assumes that risk. The effectiveness, warranty and longevity of this equipment are directly related to the manner in which it is INSTALLED, USED and/or MAINTAINED. THE USER ASSUMES ALL RISK. By purchasing this product and opening the packaging, purchasers expressly acknowledge, understand and agree that they take, select and purchase these MetalCloak products from Armored Works, LLC, its affiliates and distributors and agents as is and with all faults. The entire risk as to the quality and performance of these MetalCloak products is with the purchaser. Working on your vehicle can be a dangerous activity. If you are unsure of what you are doing, please leave mechanical or safety critical work to a skilled mechanic. We take no responsibility for the incorrect use and/or installation of MetalCloak products.

Section 1: Tools & Notes on Installation

Tools Required: This list is the recommended tools for ease of installation. Other versions of the same tool can be used. For example, Allen Wrenches instead of Allen Drive Sockets.



Socket & Ratchet Wrench

15mm Socket 18mm Socket
22mm Socket 1/2" Socket



5/16 Drill Bit

Drill



T55 Torx Socket

Tape Measure



HOW TO USE THIS GUIDE: The installation guide contains ALL steps for installation. Please read and follow the instructions in order of each page top to bottom, and left to right.

Jeep Model: Instructions may apply to multiple Jeep models, but are labeled separately where appropriate (i.e. TJ vs. LJ).

Options: Because of the number of component options we offer, these instructions may contain steps that will not match your particular configuration. You can skip these steps.

Images: Pictures are provided and parts are labeled throughout the instructions. Each text box contains guidance based on the pictures next to it. The text will refer to alphabetical labels (A, B, etc.) found in the images.

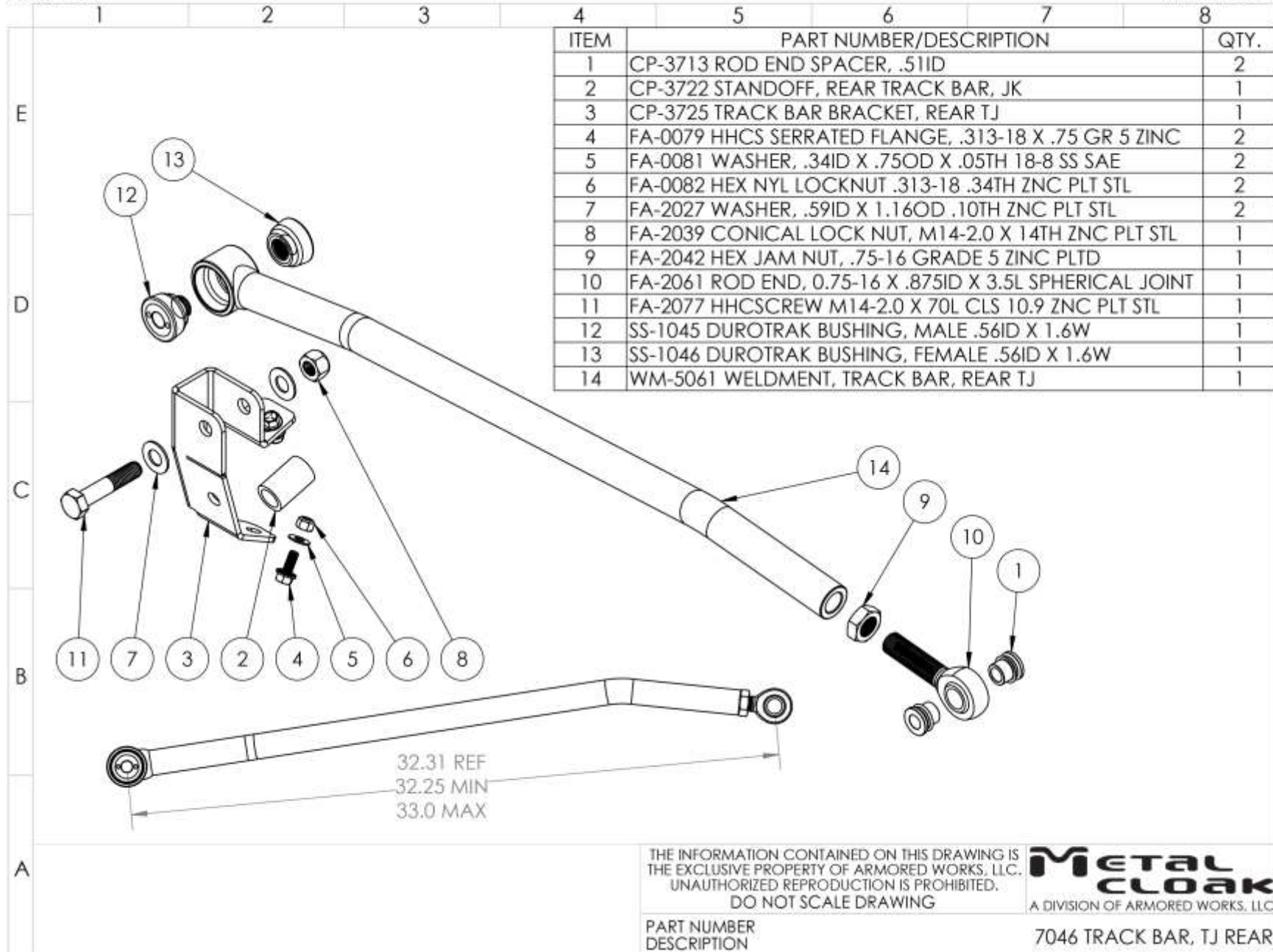
Installation Notes: Terms may be used in the body of the instructions that you may not be familiar with, if you have any questions feel free to contact us at the number below, or email techhelp@metalcloak.com

QUESTIONS: Any questions or comments about the instructions? Call us at 916-631-8071 M-F 7:00 AM – 5:00 PM PST.

Section 2: Product Components

DC-0001 REV A

SHEET 1 OF 1

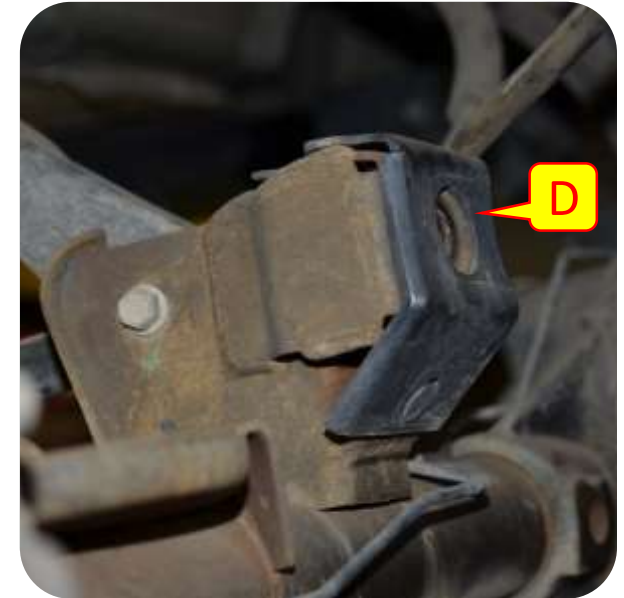
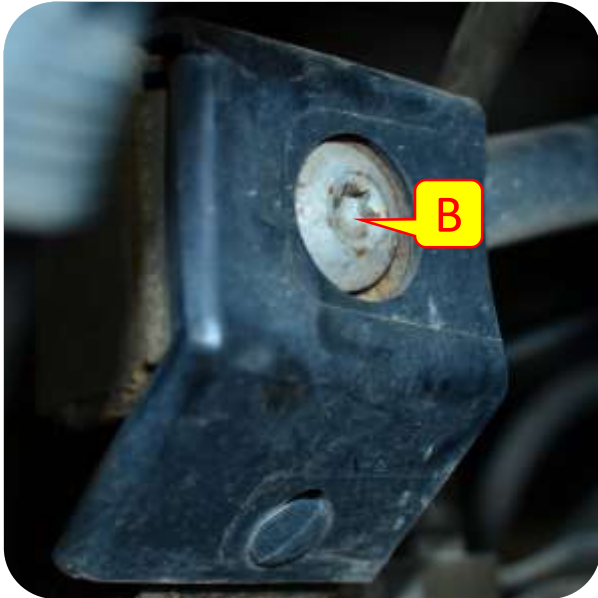


Section 3: Installation Instructions



Step 1: Remove Stock Rear Track Bar

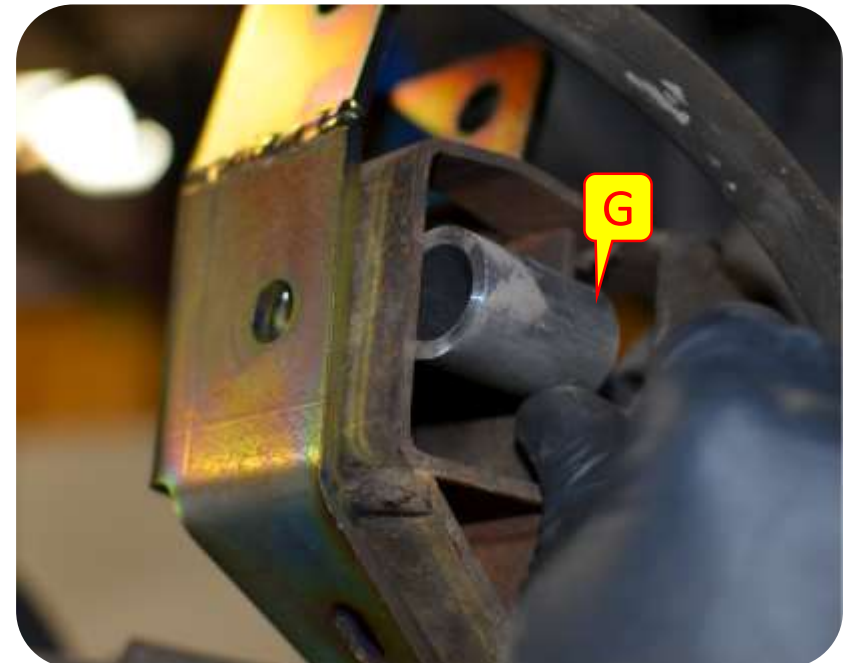
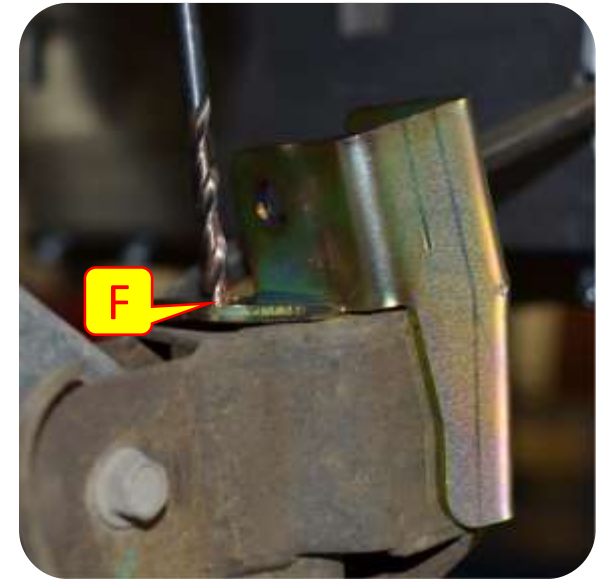
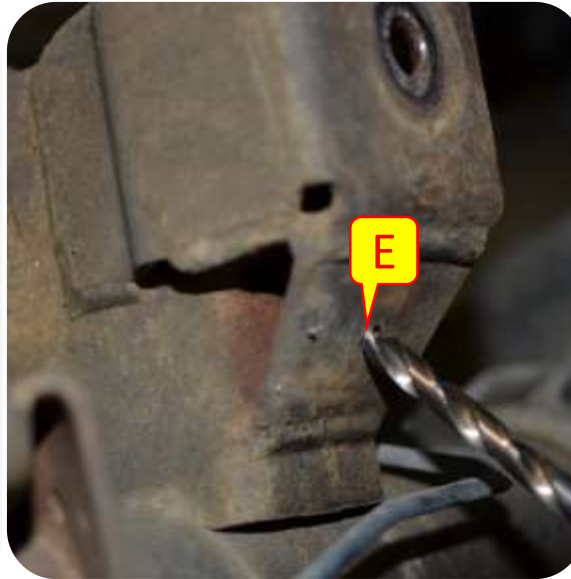
- A. Raise the rear of the vehicle and support rear axle with jack stands.
- B. Disconnect the axle side of the stock rear track bar with a T55 torx socket. Keep stock hardware.
- C. Using a 15mm socket on the bolt and a 18mm socket on the nut disconnect the stock rear track bar from the frame bracket. Keep stock hardware.
- D. Remove the rear track bar mount cover.



Section 3: Installation Instructions

Step 2: Installing Rear Track Bar

- E. Using a 5/16 drill bit drill out bottom hole in the stock track bar mount.
- F. Place the MetalCloak rear track bar relocation bracket onto the stock track bar bracket and use a 5/16 drill bit to drill out the top hole.
- G. Place the provided spacer inside the stock track bar bracket.
- H. Using the stock hardware tighten bolt using a T55 torx socket.



Section 3: Installation Instructions

Step 2: Installing Rear Track Bar

- I. Install the bottom and top bolts into the drilled out holes and tighten using a 1/2" socket.
- J. Using the provided hardware install the fixed end of the rear track bar into the upper part of the relocation bracket. Tighten bolt using a 22mm socket.
- K. Remove stands and lower Jeep onto the ground.
- L. Center vehicle over rear axle. Measuring carefully using like points on each side of the vehicle until centered.



Section 3: Installation Instructions



Step 3: Center Rear Axle



M. Adjust the frame side of the rear track bar to fit into the factory track bar bracket.

N. Using a 15mm socket on the bolt and a 18mm socket on the nut install the adjustable end of the rear track bar using the stock hardware.

O. Tighten all hardware.

