



PRODUCT: Long Arm Frame Mount System

REV: B | 06-25-2015 | II-7087

READ INSTRUCTIONS IN FULL BEFORE INSTALLATION.

QUESTIONS? CALL 916-631-8071 M-F 7:00 AM – 5:00 PM PST

The MetalCloak experience includes the ease of installation of our products. We design for most contingencies, but installation may be different based on different Jeep condition, configuration and/or year.

We are continually trying to improve our products and instructions – please help us by providing feedback and pictures if you find any part of the instructions that do not match your particular Jeep or are not easily understandable.

If you have any difficulties at all, please give us a call. Thank you and enjoy your MetalCloak Products!

IMPORTANT NOTE: We use Stainless Steel Hardware where possible. Therefore, a tube of Silver Anti-seize is provided and should be used on all bolts—only a small amount is needed.

WARRANTY INFORMATION: This article is sold without warranty expressed or implied. No warranty or representation is made as to this products ability to protect the user from injury or death. The user assumes that risk. The effectiveness, warranty and longevity of this equipment are directly related to the manner in which it is INSTALLED, USED and/or MAINTAINED. THE USER ASSUMES ALL RISK. By purchasing this product and opening the packaging, purchasers expressly acknowledge, understand and agree that they take, select and purchase these MetalCloak products from Armored Works, LLC, its affiliates and distributors and agents as is and with all faults. The entire risk as to the quality and performance of these MetalCloak products is with the purchaser. Working on your vehicle can be a dangerous activity. If you are unsure of what you are doing, please leave mechanical or safety critical work to a skilled mechanic. We take no responsibility for the incorrect use and/or installation of MetalCloak products.

Section 1: Tools & Notes on Installation



This is an advanced suspension install for experienced technicians; If you are not competent with advanced automotive mechanics, cutting, drilling, and welding it is recommended to have this system installed by a MetalCloak Authorized Installer.

Safety Warning: *Suspension systems or components that enhance the off-road performance of a vehicle may cause it to handle differently on or off-road than it did from the factory. Care must be taken to maintain control of modified vehicles during sudden maneuvers. Failure to drive the vehicle safely may result in serious injury or death to driver and passengers. MetalCloak recommends always wearing a safety belt, driving safely trying to avoid sudden maneuvers. As with any vehicle maintenance is required to keep it operating safely. Thoroughly inspect your vehicle before and after every off-road use.*

Installation Warning: *MetalCloak recommends that certified technicians perform the installations of MetalCloak products. These instructions only cover the installation of our products and may not include factory procedures for disassembly and reassembly of factory components.*

Read instructions from start to finish and be sure all parts are present before disassembling the vehicle. These instructions are only guidelines for installation and in no way meant as definitive. The installer is responsible to insure that the vehicle is safe for use after performing modifications.

Slip yoke eliminator and CV driveshaft is required for this Long Arm System.

Exhaust modifications are required for this Long Arm System.

Section 1: Tools & Notes on Installation

Tools Required: This list is the recommended tools for ease of installation. Other versions of the same tool can be used. For example, Allen Wrenches instead of Allen Drive Sockets.



Socket & Ratchet Wrench

Safety Glasses



Grinder

Drill



1/2" Drill Bit
1" Hole Saw

Gas Welder



Socket Set

HOW TO USE THIS GUIDE: The installation guide contains ALL steps for installation. Please read and follow the instructions in order of each page top to bottom, and left to right.

Jeep Model: Instructions may apply to multiple Jeep models, but are labeled separately where appropriate (i.e. TJ vs. LJ).

Options: Because of the number of component options we offer, these instructions may contain steps that will not match your particular configuration. You can skip these steps.

Images: Pictures are provided and parts are labeled throughout the instructions. Each text box contains guidance based on the pictures next to it. The text will refer to alphabetical labels (A, B, etc) found in the images.

Installation Notes: Terms may be used in the body of the instructions that you may not be familiar with, if you have any questions feel free to contact us at the number below, or email techhelp@metalcloak.com

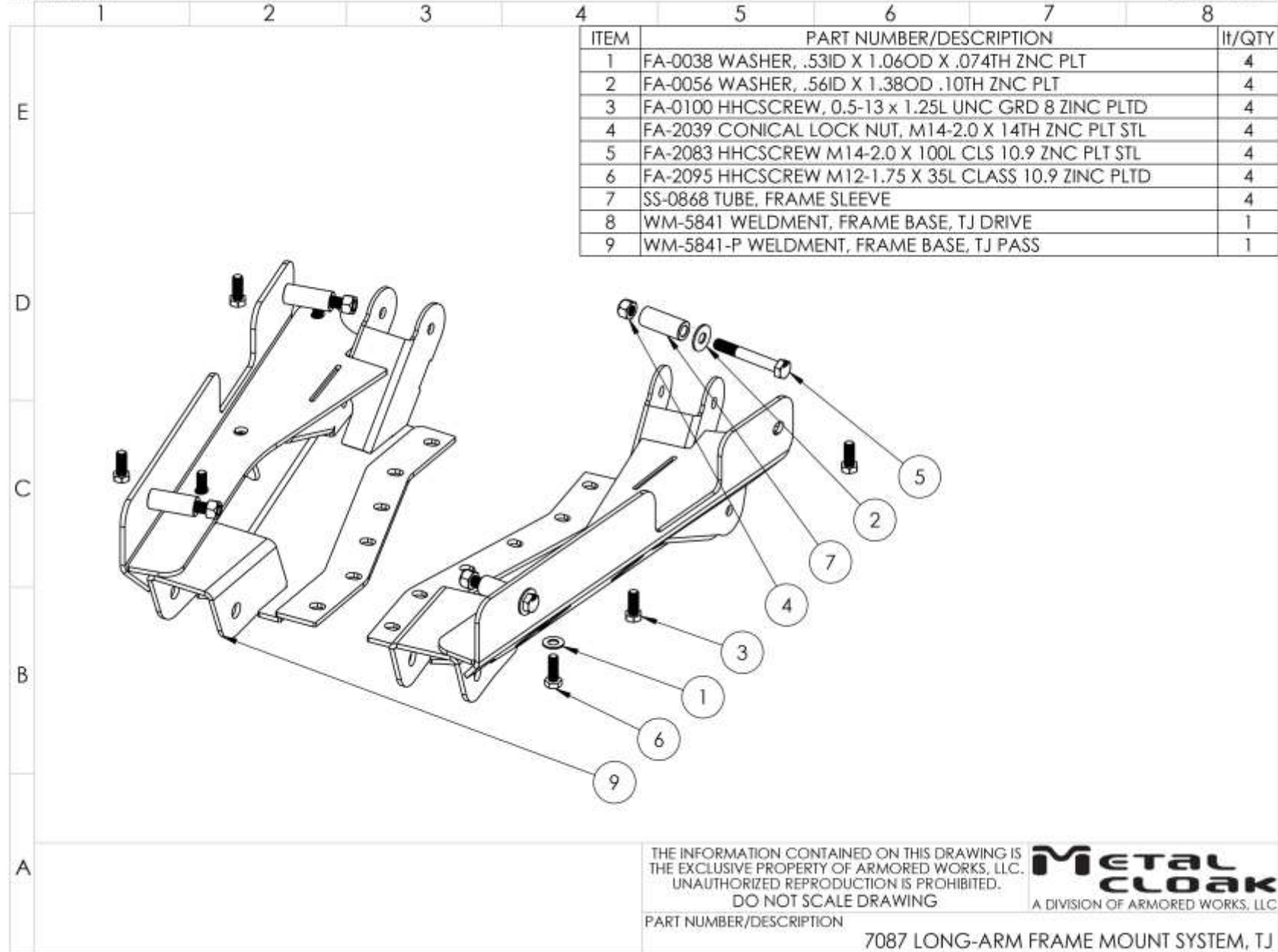
QUESTIONS: Any questions or comments about the instructions? Call us at 916-631-8071 M-F 7:00 AM – 5:00 PM PST.

Section 2: Product Components



DC-0001 REV A

SHEET 1 OF 1



Section 2: Installation Instructions



Step 1: Removal of Factory Lower Control Arm Mounts on Frame

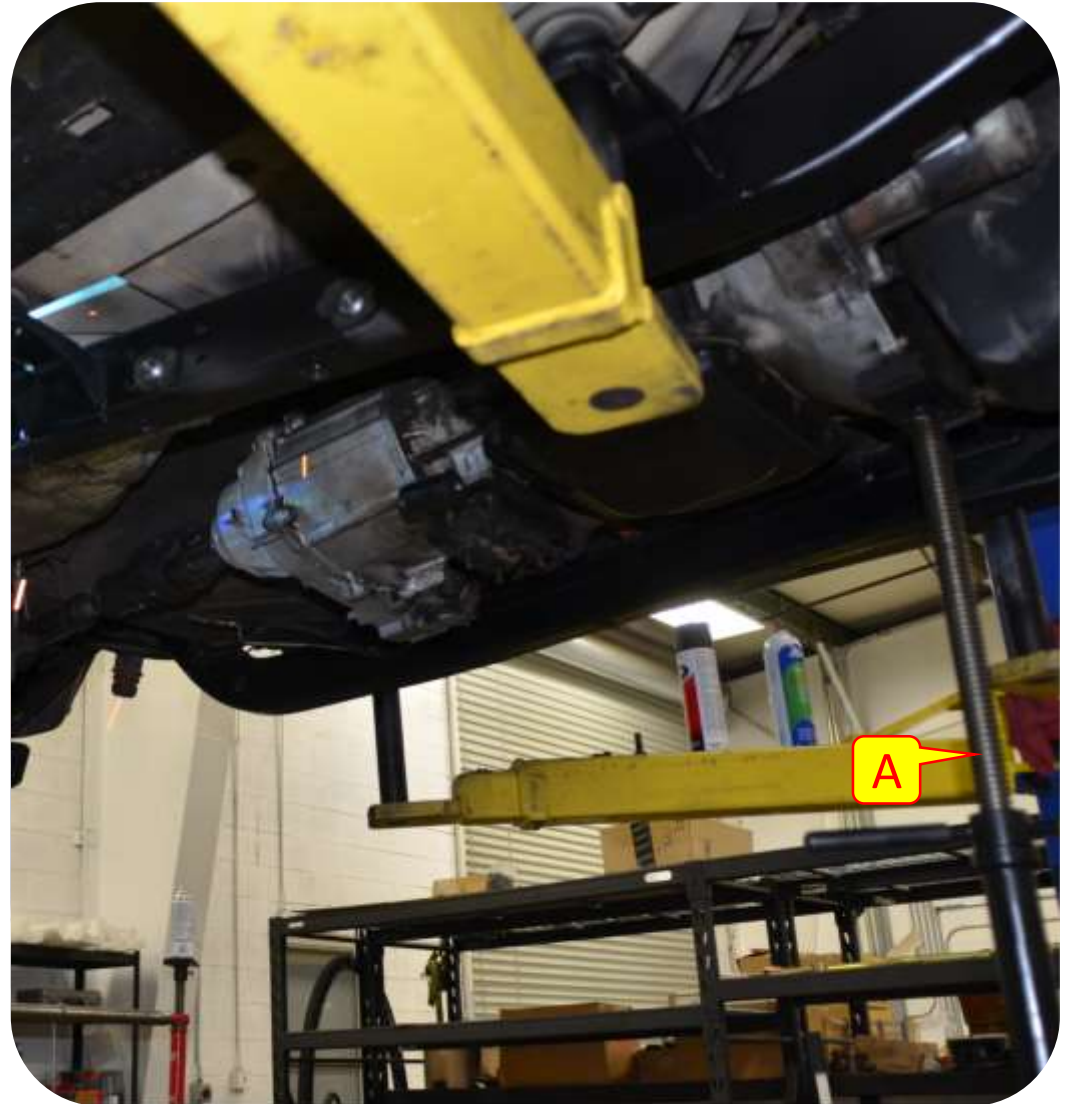
- A. Support vehicle by frame (*preferably on a lift*) Support both axles with jack stands and remove the following components; Wheels, shocks, track bars, sway bar end links, coil springs, lower control arms, bump stops, rear drive shaft, and exhaust system behind the catalytic converter
- B. Cut off the (4) factory lower and (4) factory upper control arm mounts from the frame.
- C. Grind sharp areas smooth and repaint



Section 2: Installation Instructions

Step 2: Removal of Crossmember

- A. Support the transmission and transfer case and remove the stock crossmember.

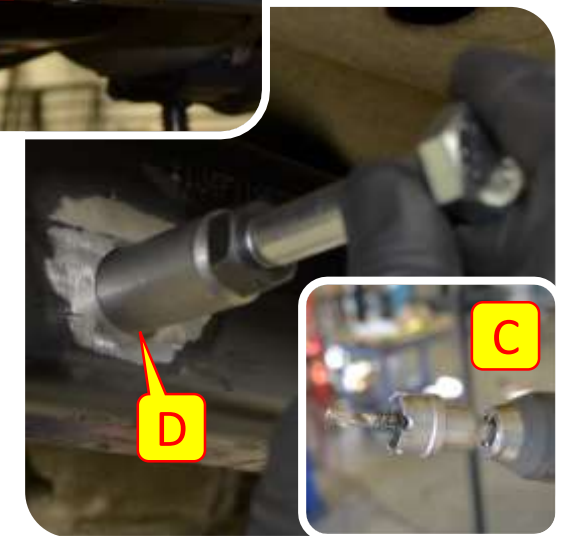
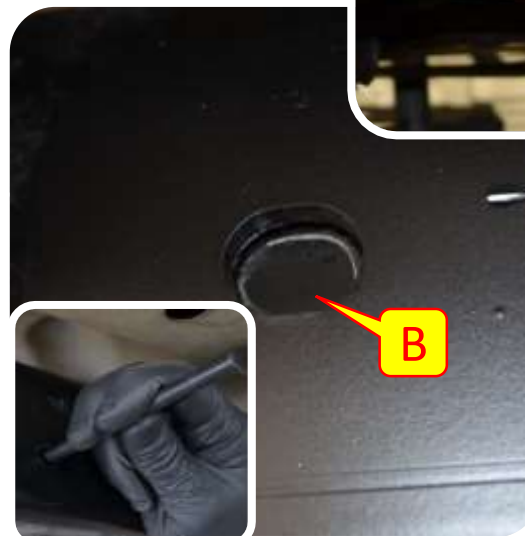
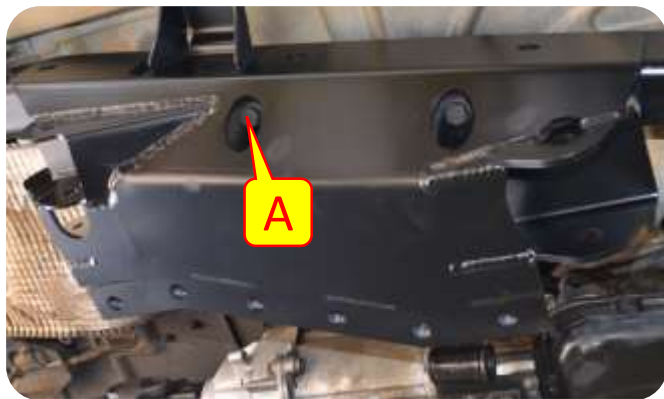


Note: The “Rubicon” model TJ’s will require relocation of the compressor. The factory compressor bracket may be reused by drilling a hole and mounting it to the seat belt bolt on the underside of the vehicle.

Section 2: Installation Instructions

Step 3: Install MetalCloak Skid Plate System

- A. Install side plates using factory holes to locate.
- B. Once the side plate is mounted mark holes on frame rail.
- C. Remove side plates and cut holes in outside frame rail for sleeves using 1" hole saw.
- D. Prepare frame rail surface for welding and install frame sleeves.
- E. Weld in frame sleeves.
- F. Use welded frame sleeve as guide to drill a 1/2" hole through inside frame rail.
- G. Grind welded areas flush and repaint bare surfaces.



Section 2: Installation Instructions



Step 3: Install MetalCloak Skid Plate System

- G. Chase bolt holes with drill bit to remove any burrs.
- H. Bolt side plates on to frame rails
- I. Install transmission mount adapter on center section
- J. Install center section to frame rails
- K. Lower transmission and bolt to center section.
- L. Tighten all hardware.

