



Installation Instructions



PRODUCT: JK Hi-Steer Kit

REV: B | 08-20-2020 | II-7247

**READ INSTRUCTIONS IN FULL BEFORE INSTALLATION.
QUESTIONS? CALL 916-631-8071 M-F 7:00 AM – 5:00 PM PST**

The MetalCloak experience includes the ease of installation of our products. We design for most contingencies, but installation may be different based on different Jeep condition, configuration and/or year.

We are continually trying to improve our products and instructions – please help us by providing feedback and pictures if you find any part of the instructions that do not match your particular Jeep or are not easily understandable.

If you have any difficulties at all, please give us a call. Thank you and enjoy your MetalCloak Products!

IMPORTANT NOTE: We use Stainless Steel Hardware where possible. Therefore, a tube of Silver Anti-seize is provided and should be used on all bolts—only a small amount is needed.

WARRANTY INFORMATION: This article is sold without warranty expressed or implied. No warranty or representation is made as to this products ability to protect the user from injury or death. The user assumes that risk. The effectiveness, warranty and longevity of this equipment are directly related to the manner in which it is INSTALLED, USED and/or MAINTAINED. THE USER ASSUMES ALL RISK. By purchasing this product and opening the packaging, purchasers expressly acknowledge, understand and agree that they take, select and purchase these MetalCloak products from Armored Works, LLC, its affiliates and distributors and agents as is and with all faults. The entire risk as to the quality and performance of these MetalCloak products is with the purchaser. Working on your vehicle can be a dangerous activity. If you are unsure of what you are doing, please leave mechanical or safety critical work to a skilled mechanic. We take no responsibility for the incorrect use and/or installation of MetalCloak products.

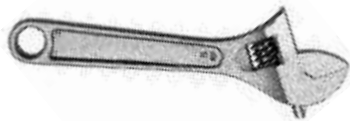
Section 1: Tools & Notes on Installation

Tools Required: This list is the recommended tools for ease of installation. Other versions of the same tool can be used. For example, Allen Wrenches instead of Allen Drive Sockets.



Ratchet

14mm Socket
19mm Socket
22mm Socket



Large Adjustable Wrench

9/16" Wrench
22mm Wrench



Hammer

Drill



7/8" Drill Bit

10mm Allen Socket or Wrench



HOW TO USE THIS GUIDE: The installation guide contains ALL steps for installation. Please read and follow the instructions in order of each page top to bottom, and left to right.

Jeep Model: Instructions may apply to multiple Jeep models, but are labeled separately where appropriate (i.e. TJ vs. LJ).

Options: Because of the number of component options we offer, these instructions may contain steps that will not match your particular configuration. You can skip these steps.

Images: Pictures are provided and parts are labeled throughout the instructions. Each text box contains guidance based on the pictures next to it. The text will refer to alphabetical labels (A, B, etc.) found in the images.

Installation Notes: Terms may be used in the body of the instructions that you may not be familiar with, if you have any questions feel free to contact us at the number below, or email techhelp@metalcloak.com

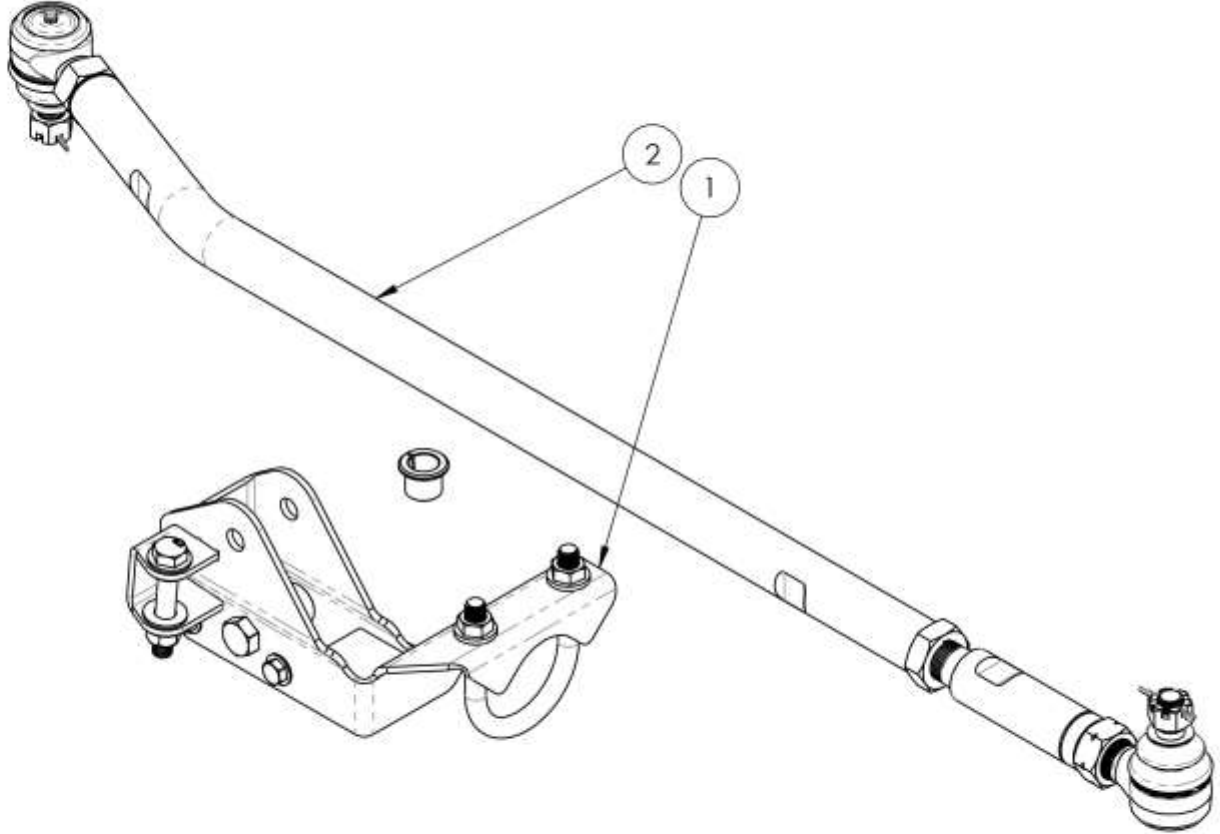
QUESTIONS: Any questions or comments about the instructions? Call us at 916-631-8071 M-F 7:00 AM – 5:00 PM PST.

Section 2: Product Components

DC-0001 REV A

SHEET 1 OF 1

1	2	3	4	5	6	7	8
ITEM	PART NUMBER/DESCRIPTION			QTY.			
1	7193 DRAG LINK FLIP BRACKET, JK			1			
2	7243 HD DRAG LINK, JK			1			



THE INFORMATION CONTAINED ON THIS DRAWING IS THE EXCLUSIVE PROPERTY OF ARMORED WORKS, LLC. UNAUTHORIZED REPRODUCTION IS PROHIBITED.
DO NOT SCALE DRAWING

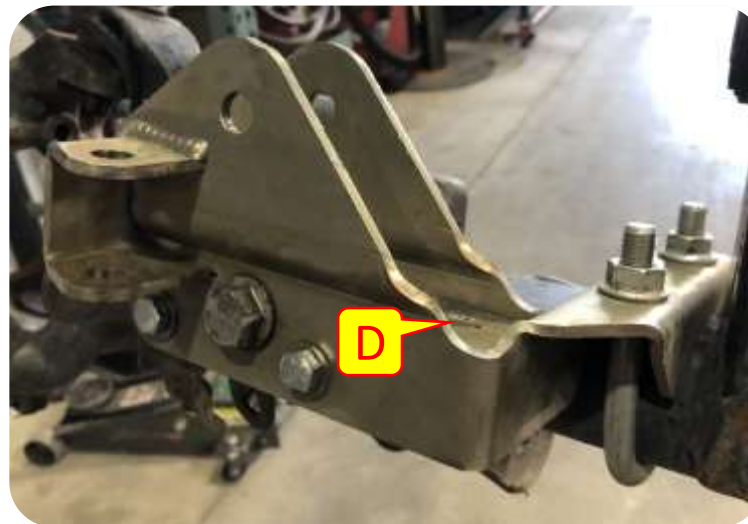
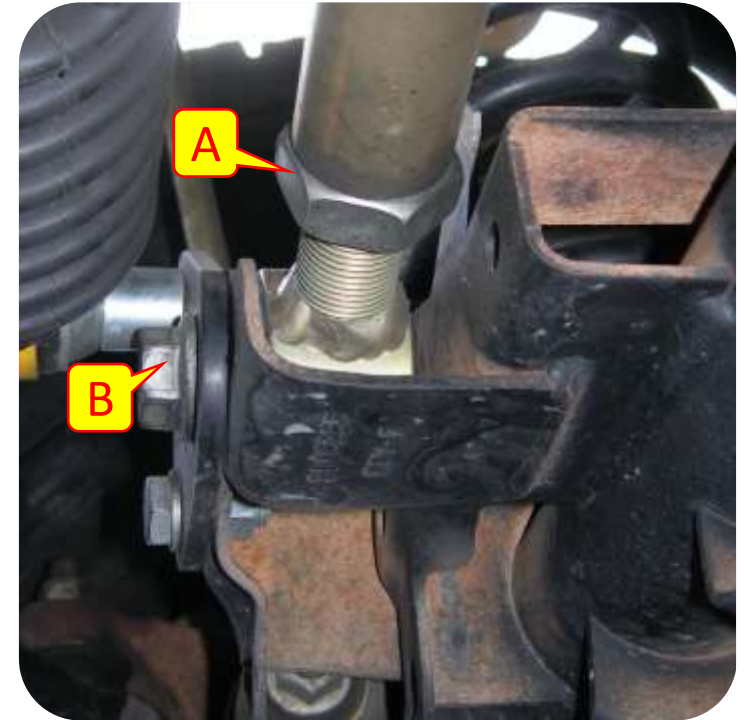
MetalCloak
 A DIVISION OF ARMORED WORKS, LLC

PART NUMBER/DESCRIPTION
 7247 DRAG LINK FLIP KIT, JK

Section 3: Installation Instructions

Step 1: Disconnect stock components

- A. Loosen Front Track Bar Jam Nut.
- B. Disconnect the Track Bar on the passenger side using a 22mm socket.
- C. Disconnect the axle mount side of the steering stabilizer *(If you have an aftermarket steering stabilizer mount, disconnect the mount).*
- D. Place the Flip Kit Mount over the top of the Axle
- E. Hand Tighten U-Bolt.

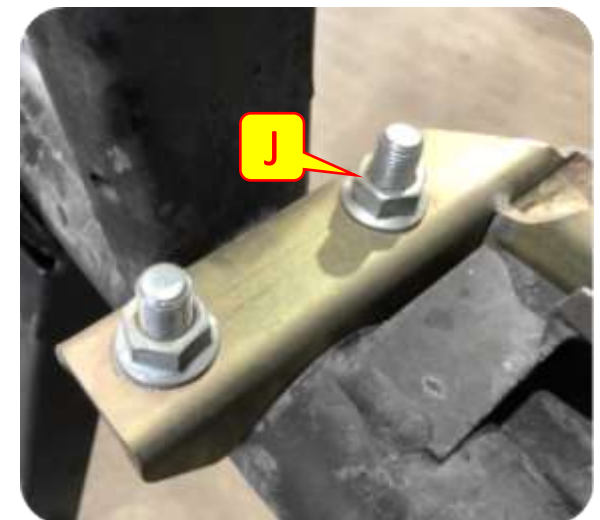
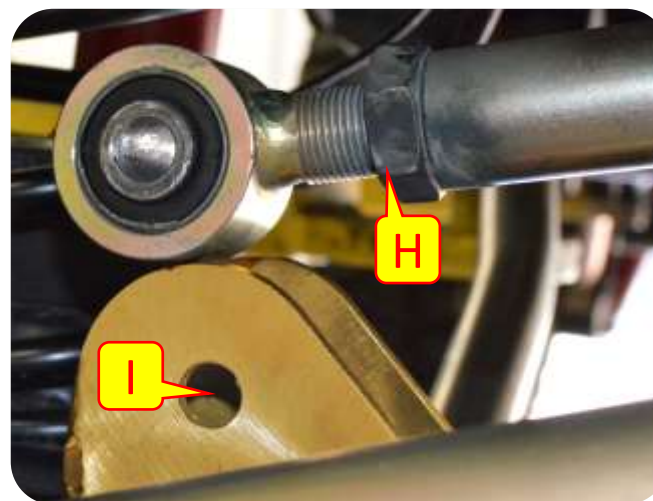
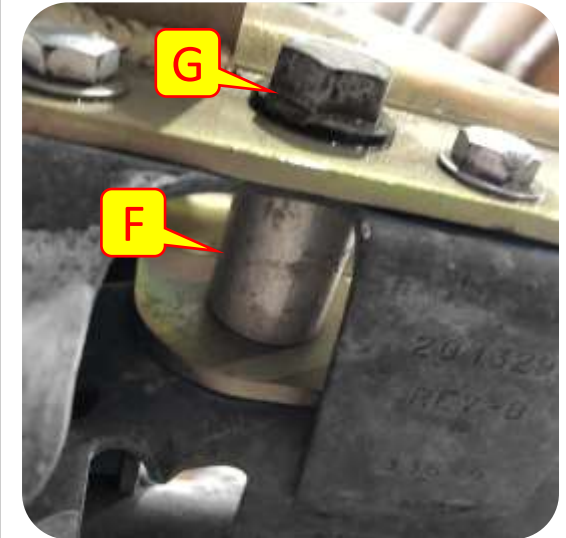


Section 3: Installation Instructions

Step 2: Install flip bracket

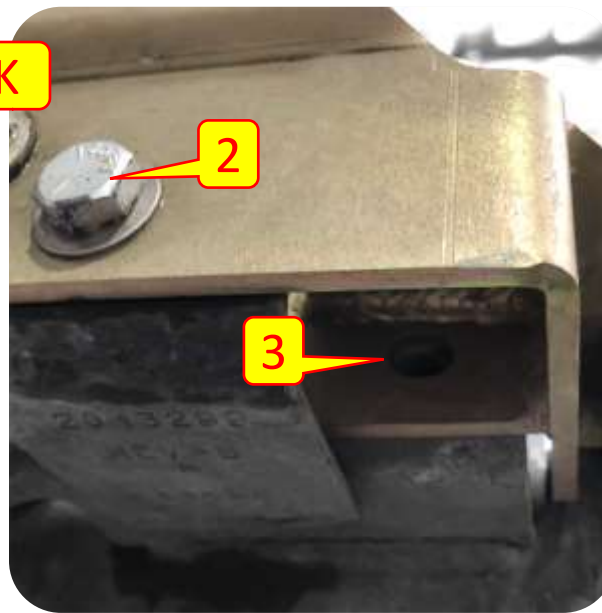
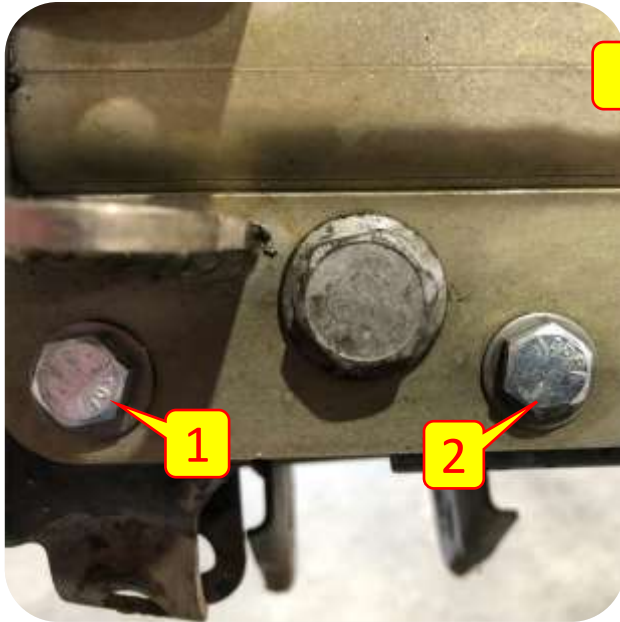
- F. Insert the bottom center bolt spacer.
- G. Using a 3/4" Socket and wrench install the bottom center bolt.
- H. Adjust Track Bar.
- I. Install track bar using a 14mm socket and a 22mm wrench.
- J. Tighten the U-bolt nuts using a 19mm socket.

Note: *It is helpful to have someone push the vehicle to the driver or passenger side to help align the hole; if you don't have an extra pair of hands you can use a ratchet strap on the frame/axle to pull the frame in the desired direction. Check to ensure the axle is centered once the bolt is in place. If not then remove the bolt, adjust the Track Bar length, replace the bolt, and re-check axle centeredness. Repeat until the axle is as close to center.*



Section 3: Installation Instructions

Step 3: Install Drag Link



- K. Install the 3 remaining mounting bolts using a 9/16" wrench and socket (*on bolt 1 insert the nut between the original steering stabilizer mount location on the bolt below the new stabilizer location*).
- L. Remove the pin from the passenger side drag link bushing.
- M. Using an adjustable wrench disconnect the drag link nut.
- N. Using a 7/8" drill bit drill out the drag link knuckle.

Section 3: Installation Instructions

Step 3: Install Drag Link



- O. Insert spacer into drilled out hole.
- P. Flip drag link and install into knuckle.
- Q. Tighten down drag link nut using an adjustable wrench
- R. Install knuckle pin
- S. Install the steering stabilizer into the steering stabilizer mount (*Install the bolt with the nut on top and tighten with a 19mm socket and wrench*).

