



PRODUCT: JK Wrangler Front Lock-N-Load System

REV: A | 03-27-2024 | II-7281

READ INSTRUCTIONS IN FULL BEFORE INSTALLATION.

QUESTIONS? CALL 916-631-8071 M-F 7:00 AM – 5:00 PM PST

The MetalCloak experience includes the ease of installation of our products. We design for most contingencies, but installation may be different based on different Jeep condition, configuration and/or year.

We are continually trying to improve our products and instructions – please help us by providing feedback and pictures if you find any part of the instructions that do not match your particular Jeep or are not easily understandable.

If you have any difficulties at all, please give us a call. Thank you and enjoy your MetalCloak Products!

IMPORTANT NOTE: We use Stainless Steel Hardware where possible. Therefore, a tube of Silver Anti-seize is provided and should be used on all bolts—only a small amount is needed.

WARRANTY INFORMATION: This article is sold without warranty expressed or implied. No warranty or representation is made as to this products ability to protect the user from injury or death. The user assumes that risk. The effectiveness, warranty and longevity of this equipment are directly related to the manner in which it is INSTALLED, USED and/or MAINTAINED. THE USER ASSUMES ALL RISK. By purchasing this product and opening the packaging, purchasers expressly acknowledge, understand and agree that they take, select and purchase these MetalCloak products from Armored Works, LLC, its affiliates and distributors and agents as is and with all faults. The entire risk as to the quality and performance of these MetalCloak products is with the purchaser. Working on your vehicle can be a dangerous activity. If you are unsure of what you are doing, please leave mechanical or safety critical work to a skilled mechanic. We take no responsibility for the incorrect use and/or installation of MetalCloak products.

Section 1: Tools & Notes on Installation



Tools Required: This list is the recommended tools for ease of installation. Other versions of the same tool can be used. For example, Allen Wrenches instead of Allen Drive Sockets.



Socket & Ratchet Wrench

18mm Socket
21mm Socket
3/4" Socket



Grinder / Cutoff wheel

18mm Wrench
21mm Wrench



HOW TO USE THIS GUIDE: The installation guide contains ALL steps for installation. Please read and follow the instructions in order of each page top to bottom, and left to right.

Jeep Model: Instructions may apply to multiple Jeep models, but are labeled separately where appropriate (i.e. TJ vs. LJ).

Options: Because of the number of component options we offer, these instructions may contain steps that will not match your particular configuration. You can skip these steps.

Images: Pictures are provided and parts are labeled throughout the instructions. Each text box contains guidance based on the pictures next to it. The text will refer to alphabetical labels (A, B, etc.) found in the images.

Installation Notes: Terms may be used in the body of the instructions that you may not be familiar with, if you have any questions feel free to contact us at the number below, or email techhelp@metalcloak.com

QUESTIONS: Any questions or comments about the instructions? Call us at 916-631-8071 M-F 7:00 AM – 5:00 PM PST.

Section 2: Product Components



DC-0001 Rev B

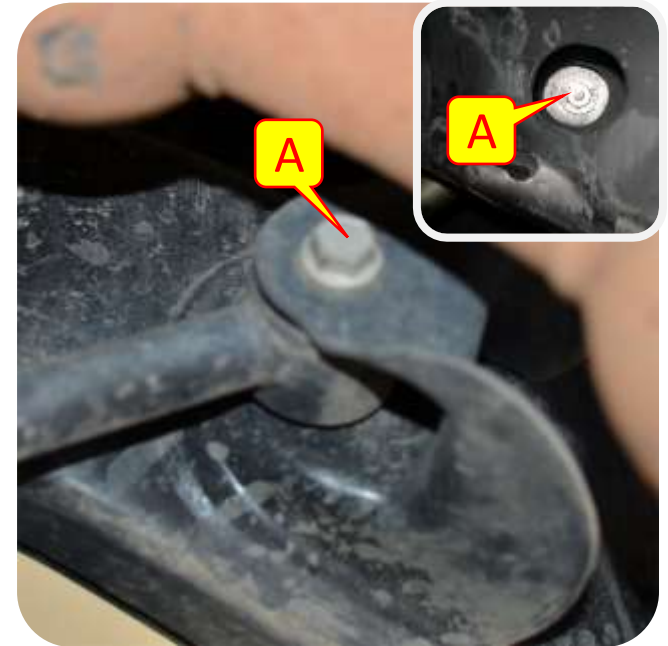
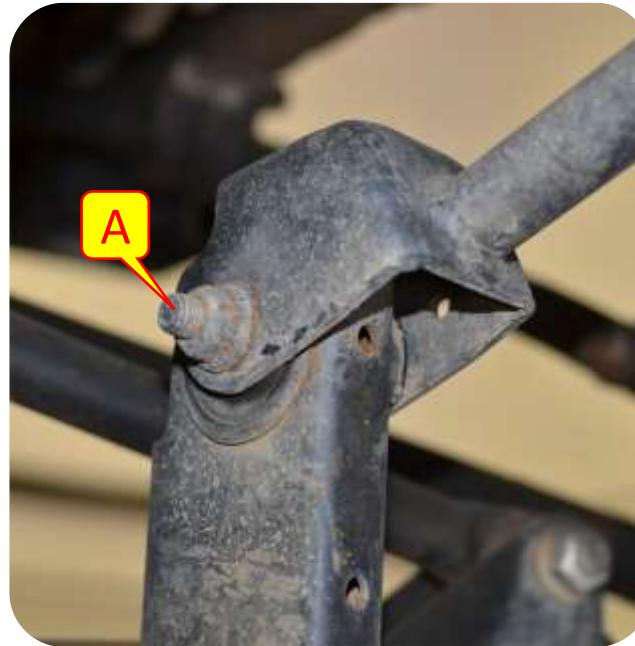
SHEET 1 OF 1

	1	2	3	4	5	6	7	8
	ITEM.	PART NUMBER / DESCRIPTION			QTY.			
	1	7230 RADIUS LONG-ARM PAIR, JK FRONT LOWER			1			
	2	7231 RADIUS ARM KIT, FRONT JK			1			
E	3	7232 LOCK-N-LOAD RADIUS ARM KIT, JK			1			
	4	7283 LONG ARM LOWER MOUNT, JK FRONT			1			
D								
C								
B								
A								
<p>THE INFORMATION CONTAINED ON THIS DRAWING IS THE EXCLUSIVE PROPERTY OF ARMORED WORKS, LLC. UNAUTHORIZED REPRODUCTION IS PROHIBITED. DO NOT SCALE DRAWING</p> <p>PART NUMBER/DESCRIPTION 7281 LOCK-N-LOAD LONG ARM SYSTEM, JK</p>					<p>A DIVISION OF ARMORED WORKS, LLC</p>			

Section 3: Installation Instructions

Step 1: Remove Front Control Arm Brackets

- A. Use an 18mm socket & wrench to remove the stock bolts. You will need a socket extension to access the head of the upper bolt inside the frame.
- B. The exhaust on the passenger side of some models interferes with removal of the upper bolt. Cut the stock bolt and replace it with the $\frac{1}{2}$ -13 x 3 $\frac{1}{4}$ " flange hex head bolt and $\frac{1}{2}$ "-20 hex flange nut provided, install bolt from the outside of frame and the nut inside the frame.
- C. Use a 21mm socket and wrench to remove the stock hardware and front lower control arms. **Save all hardware.**

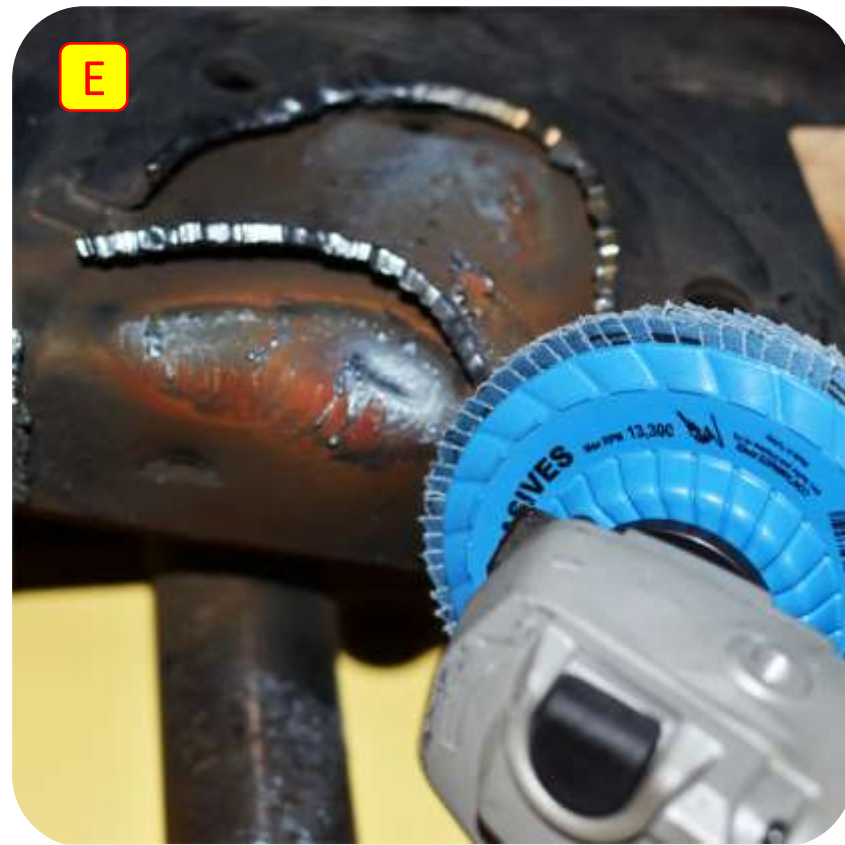


Section 3: Installation Instructions

Step 2: Remove Front Control Arm Brackets

- D. Choose your tool to remove the front lower control arm bracket at the frame; we use the combination of a plasma torch and a cut off wheel.
- E. Using a grinder grind down the modified areas until flush with the frame.

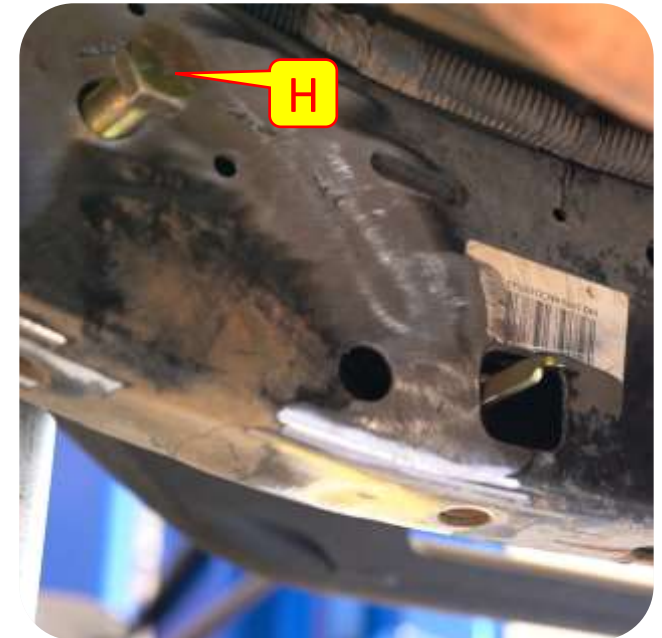
Important Note: *We recommend priming and painting any surfaces that the original finish was removed from for corrosion resistance.*



Section 3: Installation Instructions

Step 3: Front Lower Control Arm Brackets

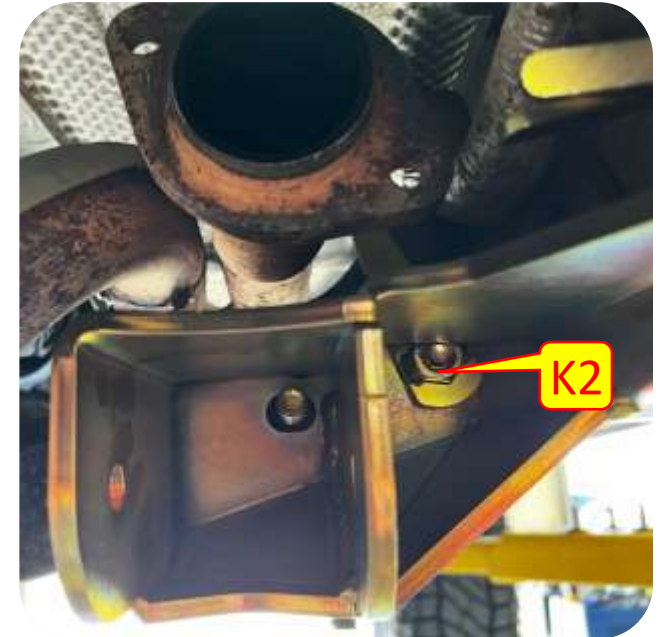
- F. Install the frame crush sleeve into the frame with a swing press. Make sure it goes through both sides of the frame and is sitting flush on both sides.
- G. Insert the large dual flag nuts into the frame through the large square hole in the frame. The lower mount will block this access once it is installed.
- H. Loosely install the 3/4 bolts to help hold the flag nut out of the way during the rest of the install of the lower mount.



Section 3: Installation Instructions

Step 3: Front Lower Control Arm Brackets

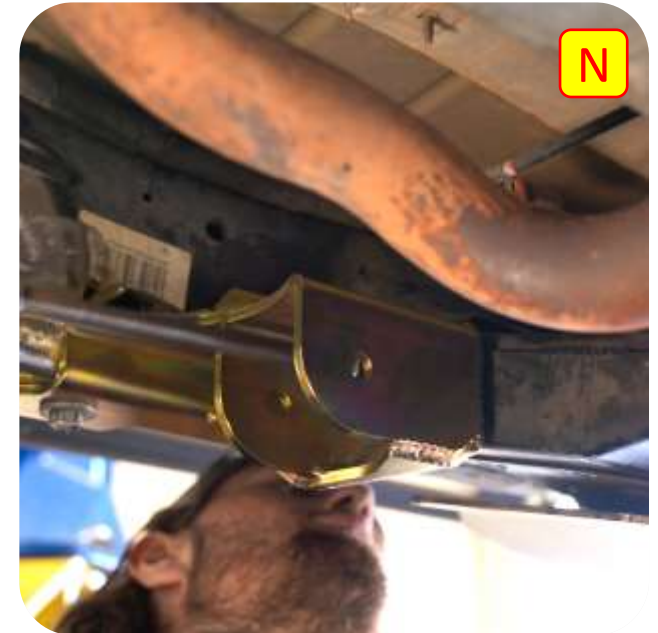
- I. Remove the Factory trans skid using 18mm socket.
- J. Support the crossmember with a Jack and remove the two factory bolts from the crossmember using an 18mm socket and wrench.
- K. Install the control arm bracket bolts through the back side of the crossmember and into the bracket and secure with the provide flag nut.



Section 3: Installation Instructions

Step 3: Front Lower Control Arm Brackets

- L. Install factory 18mm bolt into frame weld nut or if the weld nut is not equipped use the provided 1/2" bolt into the flag nut installed in step G.
- M. Install the 1/2" flange bolt, through the large frame backing washer. then through the frame Crush sleeve installed earlier using a flag nut on the bracket side and tighten down using a 3/4" in socket.
- N. Using a 3/4" socket tighten the crossmember mount bolts.
- O. Make sure all control arm bracket hardware is fully tightened.



Section 3: Installation Instructions



Step 4: Front Lower Controls

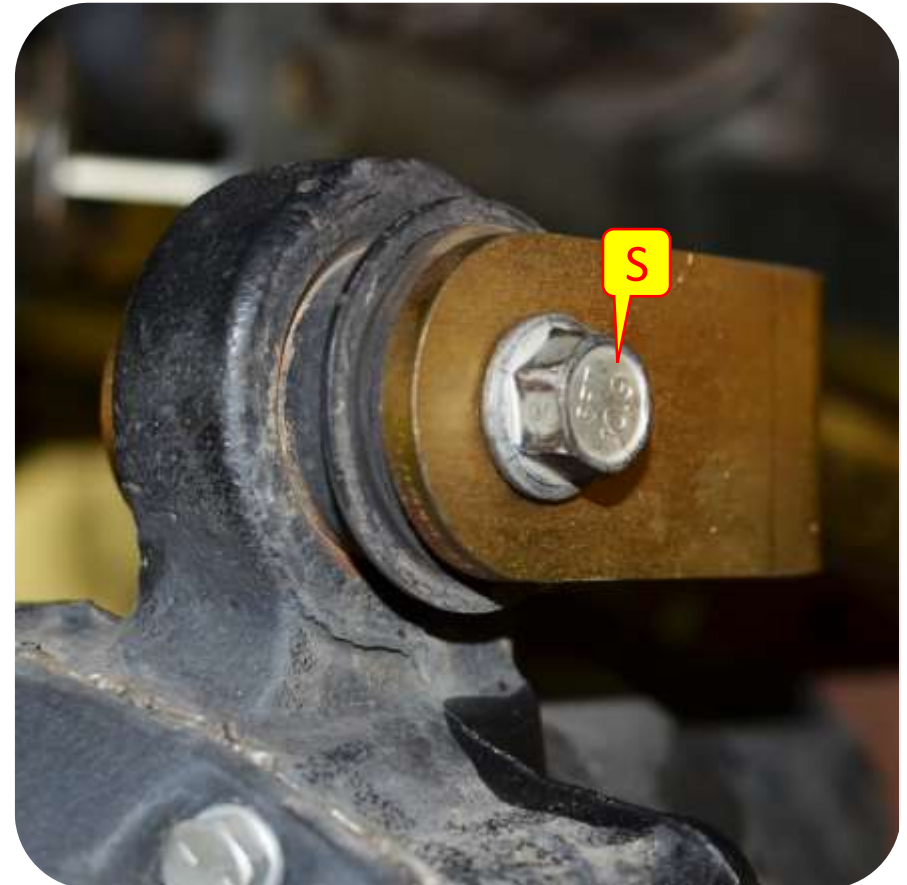
- P. Measure the Lower arm to 33 $\frac{1}{4}$ " eye to eye (*this is a starting point. Arm lengths may vary*).
- Q. Position the arms so the welded-on brackets for the front upper arms are on top and bending towards each other.
- R. Using stock hardware install the MetalCloak lower front radius long arm into the frame and axel mount.



Section 3: Installation Instructions

Step 5: Install Radius Arms

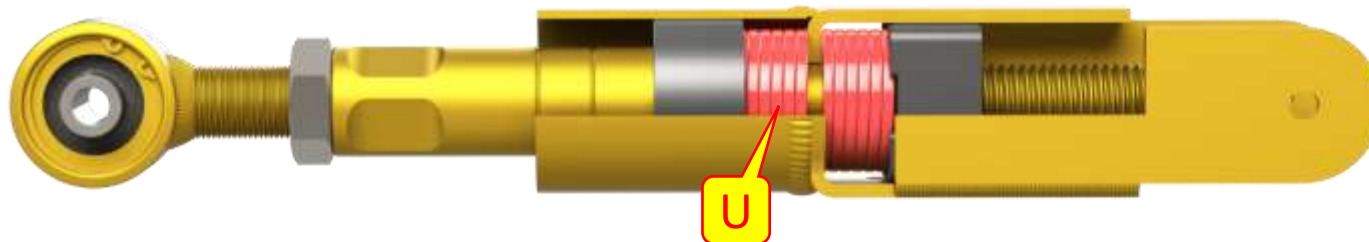
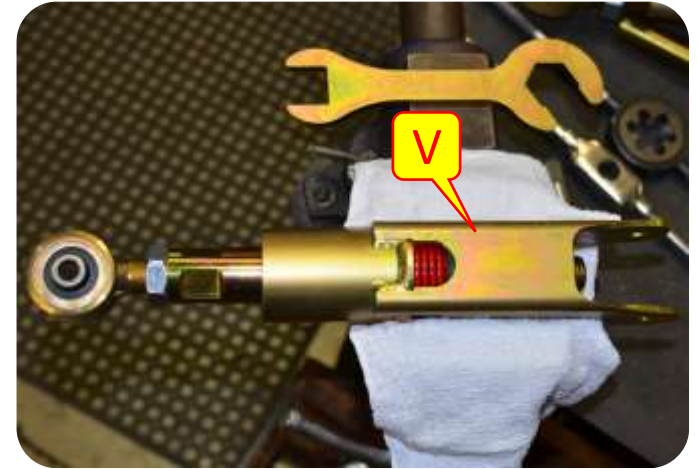
- S. Adjust the front upper control arm length to an initial setting of 19 5/8" from eye to eye. Install front upper arms with the non-adjustable side into the lower control arm brackets with supplied hardware.
- T. The upper arms will be used to adjust final caster and pinion angle.



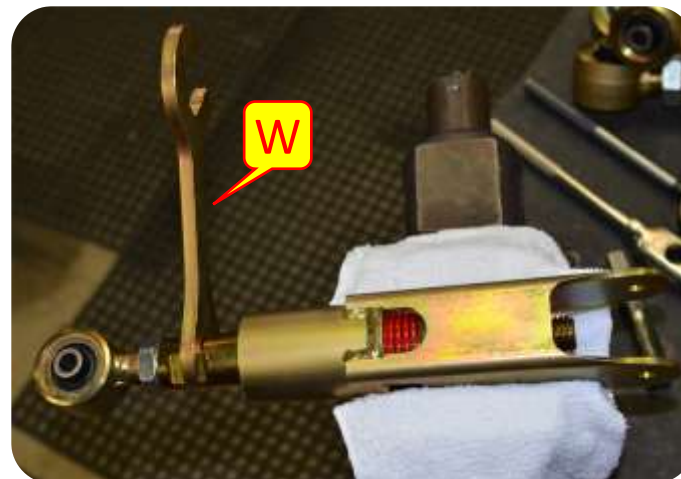
Section 3: Installation Instructions

Step 6: Install Lock-N-Load

- U. Take the Lock-N-Load control arm and make sure that it is in the Locked position (*springs are completely compressed*).
- V. If the Lock-N-Load is not in the locked position you may place the square section of the Lock-N-Load body in a vise and gently clamp to hold.
- W. Using a 1 ¼" wrench turn the adjustment of the control arm clockwise until the line on the arm corresponds with the lock position.
- X. Adjust the coupler on the control arm to 19 5/8" eye to eye (this is a starting point. Arm lengths may vary and tighten jam nut with a 1 ½" wrench).



Note: These Instructions are for the Lock-N-Load upper control arm. The Lock-N-Load was designed specifically for radius arm suspensions. The Lock-N-Load control arm is for use on radius arm suspensions and is **ONLY** installed on the passenger side upper control arm location.



Section 3: Installation Instructions

Step 6: Install Lock-N-Load

- Y. Install the squared section of the Lock-N-Load into the axle bracket and attach with given hardware.
- Z. Place back side of control arm into the radius arm bracket and attach with Lock-N-Load hardware.
- AA. Torque to spec (75lbs).
- BB. Lower the vehicle and adjust your caster.



Note: To unlock for off-road use, loosen jam nut and spin Lock-N-Load adjuster until corresponding line shows unlocked; Tighten jam nut and go wheeling.

