



PRODUCT: JK Long Arm Upper Front Frame Mount

REV: A | 07-28-2023 | II-7282

READ INSTRUCTIONS IN FULL BEFORE INSTALLATION.

QUESTIONS? CALL 916-631-8071 M-F 7:00 AM – 5:00 PM PST

The MetalCloak experience includes the ease of installation of our products. We design for most contingencies, but installation may be different based on different Jeep condition, configuration and/or year.

We are continually trying to improve our products and instructions – please help us by providing feedback and pictures if you find any part of the instructions that do not match your particular Jeep or are not easily understandable.

If you have any difficulties at all, please give us a call. Thank you and enjoy your MetalCloak Products!

IMPORTANT NOTE: We use Stainless Steel Hardware where possible. Therefore, a tube of Silver Anti-seize is provided and should be used on all bolts—only a small amount is needed.

WARRANTY INFORMATION: This article is sold without warranty expressed or implied. No warranty or representation is made as to this products ability to protect the user from injury or death. The user assumes that risk. The effectiveness, warranty and longevity of this equipment are directly related to the manner in which it is INSTALLED, USED and/or MAINTAINED. THE USER ASSUMES ALL RISK. By purchasing this product and opening the packaging, purchasers expressly acknowledge, understand and agree that they take, select and purchase these MetalCloak products from Armored Works, LLC, its affiliates and distributors and agents as is and with all faults. The entire risk as to the quality and performance of these MetalCloak products is with the purchaser. Working on your vehicle can be a dangerous activity. If you are unsure of what you are doing, please leave mechanical or safety critical work to a skilled mechanic. We take no responsibility for the incorrect use and/or installation of MetalCloak products.

Section 1: Tools & Notes on Installation

Tools Required: This list is the recommended tools for ease of installation. Other versions of the same tool can be used. For example, Allen Wrenches instead of Allen Drive Sockets.



Socket & Ratchet Wrench

18mm Socket 3/4" Socket
1 1/8" Socket



Grinder / Cutoff wheel

Electric Drill/Drill Bits
Up to a 1/2"



HOW TO USE THIS GUIDE: The installation guide contains ALL steps for installation. Please read and follow the instructions in order of each page top to bottom, and left to right.

Jeep Model: Instructions may apply to multiple Jeep models, but are labeled separately where appropriate (i.e. TJ vs. LJ).

Options: Because of the number of component options we offer, these instructions may contain steps that will not match your particular configuration. You can skip these steps.

Images: Pictures are provided and parts are labeled throughout the instructions. Each text box contains guidance based on the pictures next to it. The text will refer to alphabetical labels (A, B, etc.) found in the images.

Installation Notes: Terms may be used in the body of the instructions that you may not be familiar with, if you have any questions feel free to contact us at the number below, or email techhelp@metalcloak.com

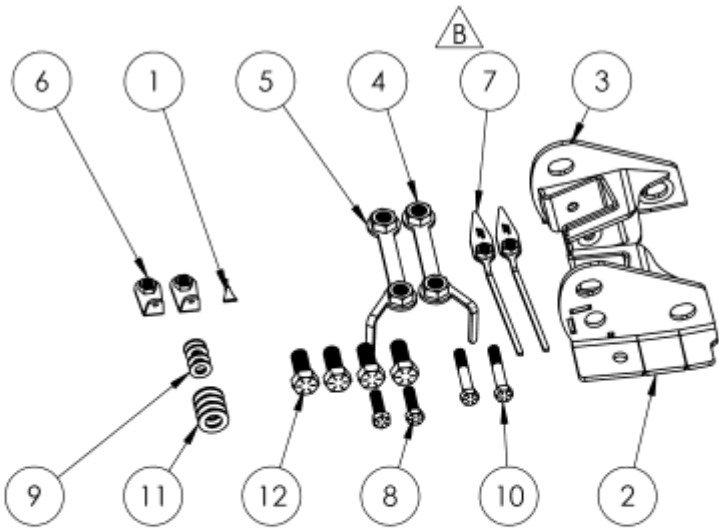
QUESTIONS: Any questions or comments about the instructions? Call us at 916-631-8071 M-F 7:00 AM – 5:00 PM PST.

Section 2: Product Components

DC-0001 Rev B

SHEET 1 OF 2

ITEM.	PART NUMBER / DESCRIPTION	QTY.
1	FA-2106 LOCTITE 262, RED .02OZ CAPSULE	1
2	WM-5884 WELDMENT, 4-LINK UPPER MOUNT, FRONT JK	1
3	WM-5884-P WELDMENT, 4-LINK MOUNT, FRONT JK	1
4	WM-5886 WELDMENT, UPPER BOLT PLATE, 4-LINK MOUNT JK	1
5	WM-5886-P WELDMENT, UPPER BOLT PLATE, 4-LINK MOUNT JK	1
6	WM-5896 WELDMENT, FLAG NUT .5-20, 4-LINK MOUNT JK JL	2
7	WM-5902 WELDMENT, RUBICON BOLT PLATE, UPPER ARM MOUNT JK	2
HK-7282		
8	FS-08173 HHCS, 0.5-13 x 1.75L STL G8 ZINC FULL THREAD	2
9	FS-08307 WASHER, 0.53ID X 1.06OD X 0.20TH STL GR8 GOLD ZINC	4
10	FS-08311 HHCS, 0.5-20 x 3.00L STL G8 ZINC	2
11	FS-12319 WASHER, 0.81ID X 1.49OD X 0.12TH STL GR8 GOLD ZINC	4
12	FS-12352 HHCS, 0.75-10 X 1.75L STL G8 GOLD ZINC	4



THE INFORMATION CONTAINED ON THIS DRAWING IS THE EXCLUSIVE PROPERTY OF ARMORED WORKS, LLC. UNAUTHORIZED REPRODUCTION IS PROHIBITED.
DO NOT SCALE DRAWING

Metal Cloak
 A DIVISION OF ARMORED WORKS, LLC

PART NUMBER/DESCRIPTION
 7282 4-LINK UPPER MOUNT, FRONT JK

Section 3: Installation Instructions

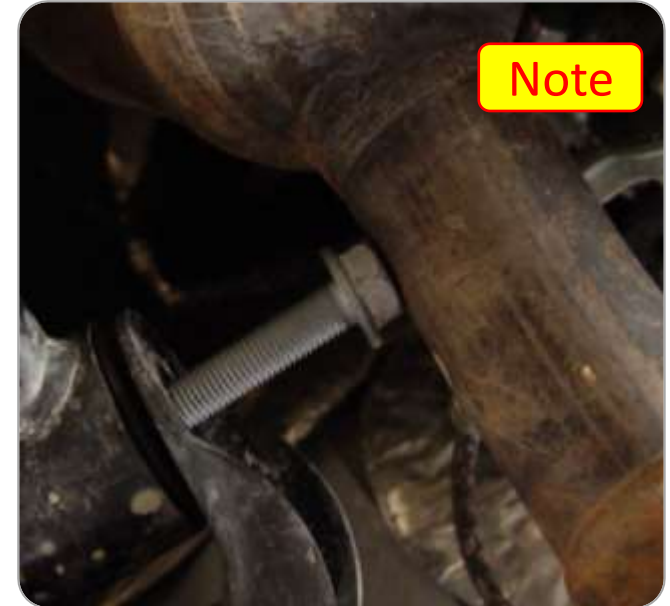
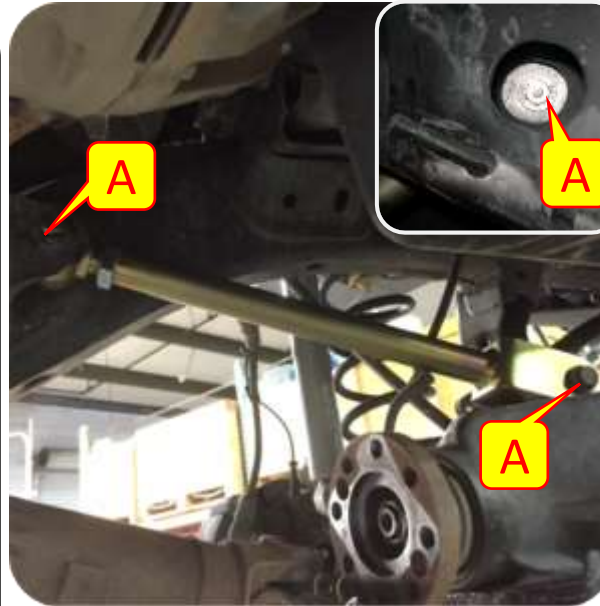
Step 1: Remove Front Control Arm Brackets

- A. Use a 18mm socket and wrench to remove the stock hardware and front upper control arms. Save all hardware.

Important Note: *The exhaust on the passenger side of some models interferes with removal of the upper bolt. Cut the stock bolt and replace it with the Flange Hex Head Bolt and Hex Flange Nut provided.*

- B. Choose your tool to remove the front control arm bracket at the frame; we use the combination of a plasma torch and a cut off wheel.

- C. Using a grinder grind down the modified areas until flush with the frame.



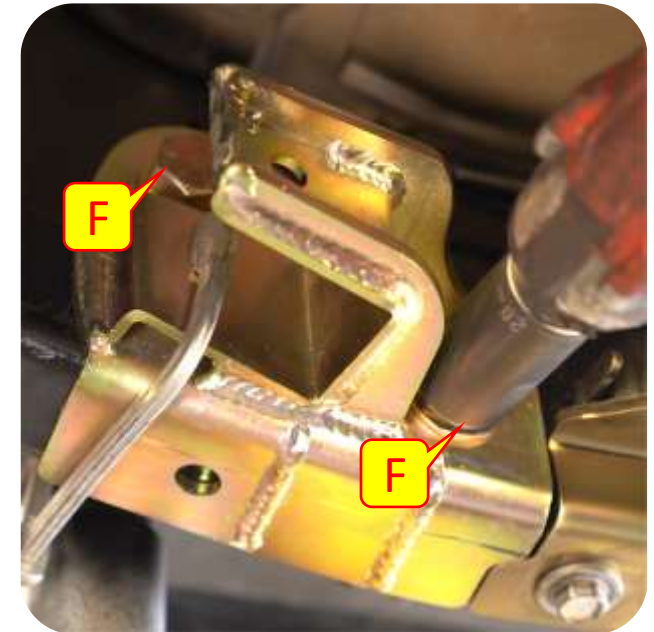
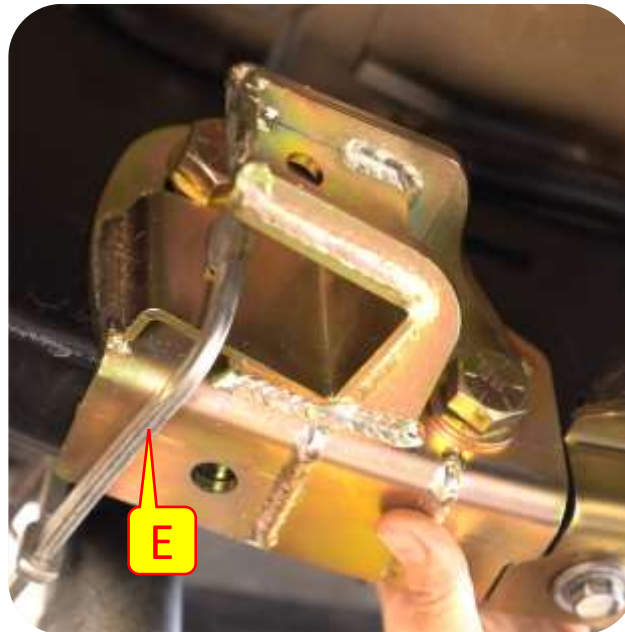
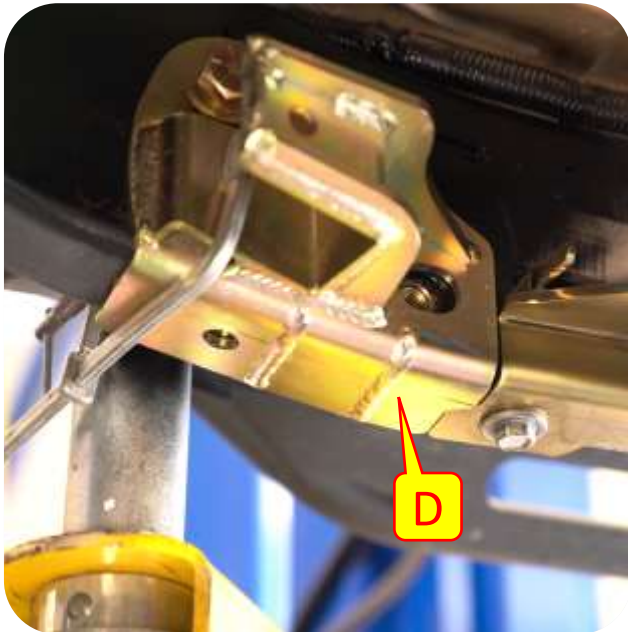
Important Note: *We recommend priming and painting any surfaces that the original finish was removed from for corrosion resistance.*

Section 3: Installation Instructions



Step 3: Front Upper Control Arm Brackets (*Bolt-On Option*)

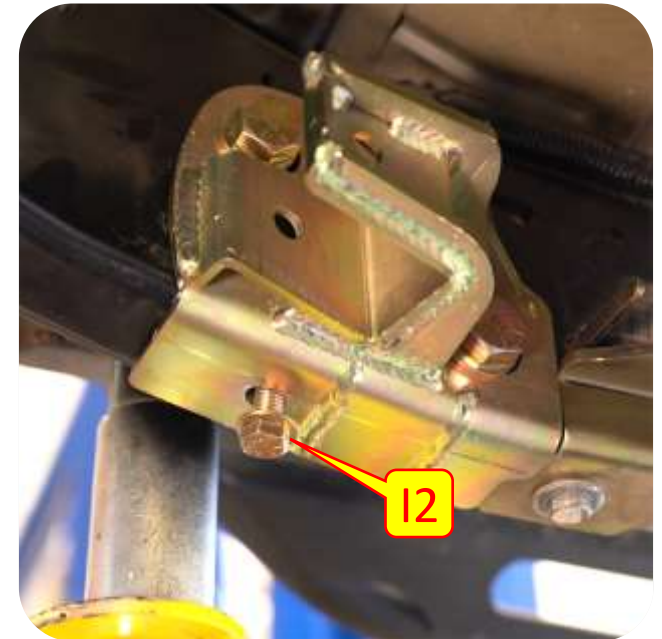
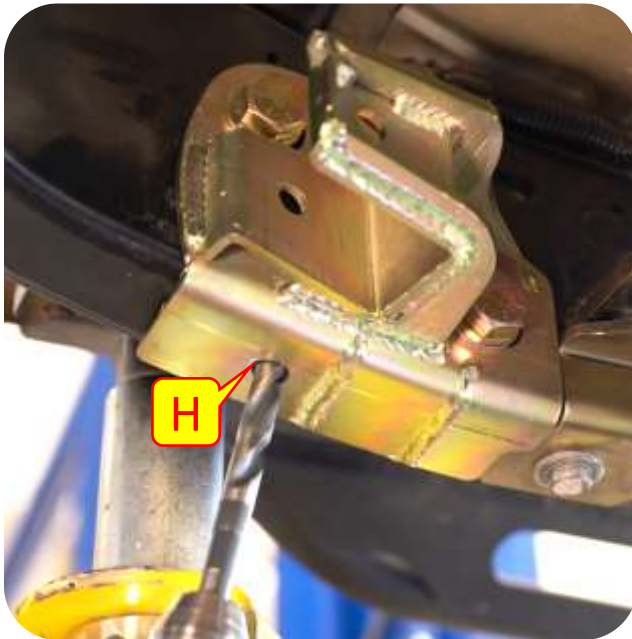
- D. Align Upper arm mount with large holes on the inside of the frame and loosely install both 3/4" bolts into the large flag nut. You can use needle nose vice grips to help grip and position the flag nut if needed.
- E. Use a floor jack or clamp to press up on the bracket to fully seat it with the frame. Also making sure the bracket remaining flush with the lower arm mount to maintain proper spacing of the arms.
- F. Fully tighten the 3/4" bolts using a 1 1/8" socket.
- G. Remove floor jack supporting upper arm mount.



Section 3: Installation Instructions

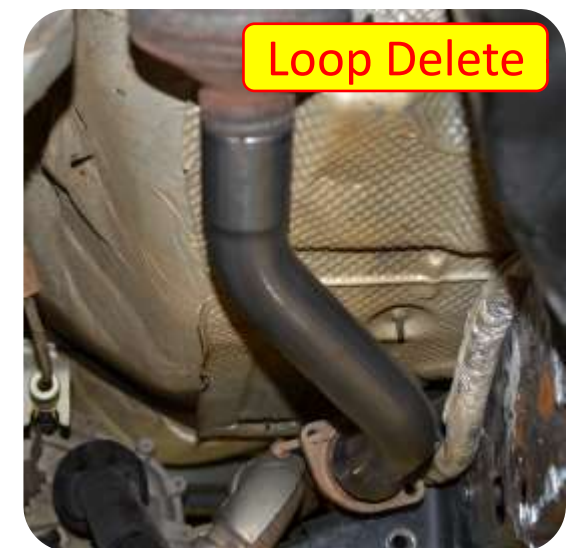
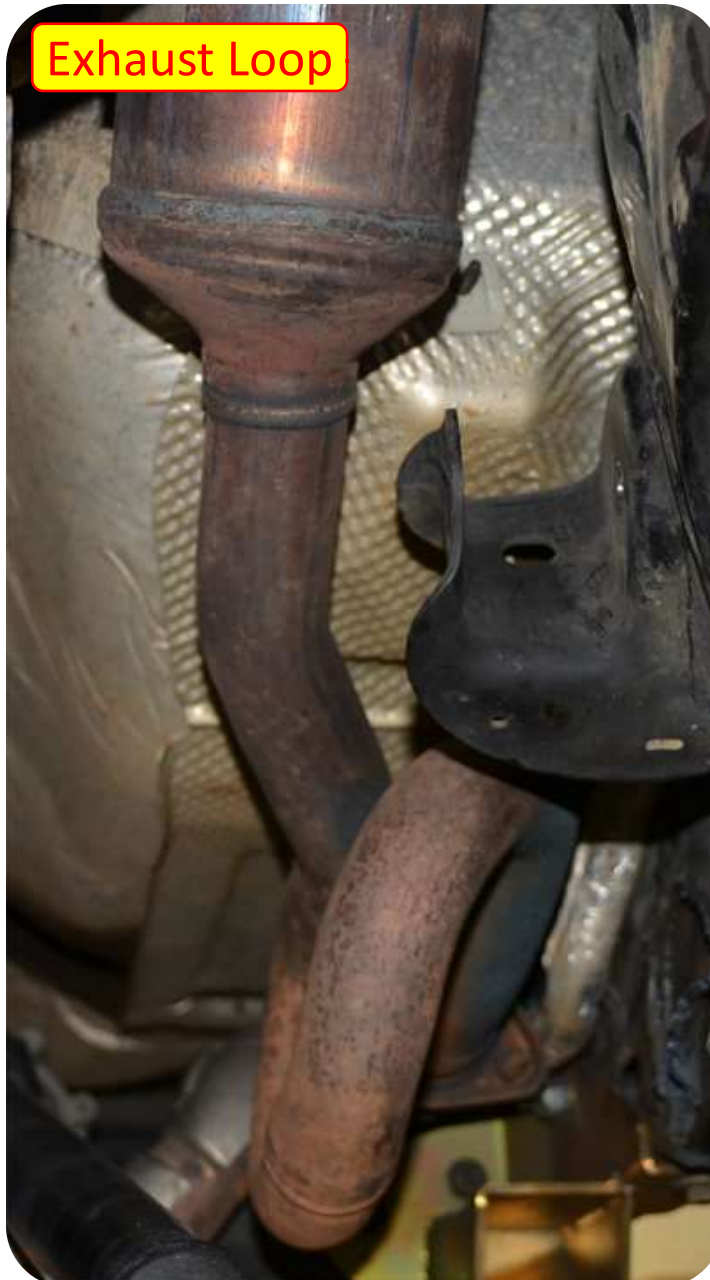
Step 3: Front Upper Control Arm Brackets (*Bolt-On Option*)

- H. Mark the Hole on the bottom of the upper arm mount and Drill out to 1/2”.
- I. Install the small flag nut through the hole in the frame within the front wheel well; using the provided 1/2” bolt install the bolt through the drilled-out hole on the bottom of the control arm mount and tighten with a 3/4” socket.
- J. Make sure all the upper bracket hardware is fully tightened.



Section 3: Installation Instructions

Step 4: Exhaust Modification



Important Note: *If exhaust modifications need to be performed (exhaust loop delete) now is a good time to do so. Follow MFG instructions on how to modify exhaust. *Exhaust loop delete is NOT included and must be purchased separately.*

Section 3: Installation Instructions



Step 5: Control Arm Installation

- U. Install Upper arm to the Upper Frame side bracket and install provided 1/2 bolt and flag nut.
- V. Install the upper arm to the upper axle mount using the factory hardware.
- W. Tighten all control arm hardware.

