



## PRODUCT: JK Front Lower Long Arm Mounting Bracket

REV: A | 02-07-2024 | II-7283

**READ INSTRUCTIONS IN FULL BEFORE INSTALLATION.**

**QUESTIONS? CALL 916-631-8071 M-F 7:00 AM – 5:00 PM PST**

The MetalCloak experience includes the ease of installation of our products. We design for most contingencies, but installation may be different based on different Jeep condition, configuration and/or year.

We are continually trying to improve our products and instructions – please help us by providing feedback and pictures if you find any part of the instructions that do not match your particular Jeep or are not easily understandable.

If you have any difficulties at all, please give us a call. Thank you and enjoy your MetalCloak Products!

**IMPORTANT NOTE: We use Stainless Steel Hardware where possible. Therefore, a tube of Silver Anti-seize is provided and should be used on all bolts—only a small amount is needed.**

**WARRANTY INFORMATION:** This article is sold without warranty expressed or implied. No warranty or representation is made as to this products ability to protect the user from injury or death. The user assumes that risk. The effectiveness, warranty and longevity of this equipment are directly related to the manner in which it is INSTALLED, USED and/or MAINTAINED. THE USER ASSUMES ALL RISK. By purchasing this product and opening the packaging, purchasers expressly acknowledge, understand and agree that they take, select and purchase these MetalCloak products from Armored Works, LLC, its affiliates and distributors and agents as is and with all faults. The entire risk as to the quality and performance of these MetalCloak products is with the purchaser. Working on your vehicle can be a dangerous activity. If you are unsure of what you are doing, please leave mechanical or safety critical work to a skilled mechanic. We take no responsibility for the incorrect use and/or installation of MetalCloak products.

## Section 1: Tools & Notes on Installation



**Tools Required:** This list is the recommended tools for ease of installation. Other versions of the same tool can be used. For example, Allen Wrenches instead of Allen Drive Sockets.



Socket & Ratchet Wrench

18mm Socket  
21mm Socket  
3/4" Socket



Grinder / Cutoff wheel

18mm Wrench  
21mm Wrench



**HOW TO USE THIS GUIDE:** The installation guide contains ALL steps for installation. Please read and follow the instructions in order of each page top to bottom, and left to right.

**Jeep Model:** Instructions may apply to multiple Jeep models, but are labeled separately where appropriate (i.e. TJ vs. LJ).

**Options:** Because of the number of component options we offer, these instructions may contain steps that will not match your particular configuration. You can skip these steps.

**Images:** Pictures are provided and parts are labeled throughout the instructions. Each text box contains guidance based on the pictures next to it. The text will refer to alphabetical labels (A, B, etc.) found in the images.

**Installation Notes:** Terms may be used in the body of the instructions that you may not be familiar with, if you have any questions feel free to contact us at the number below, or email [techhelp@metalcloak.com](mailto:techhelp@metalcloak.com)

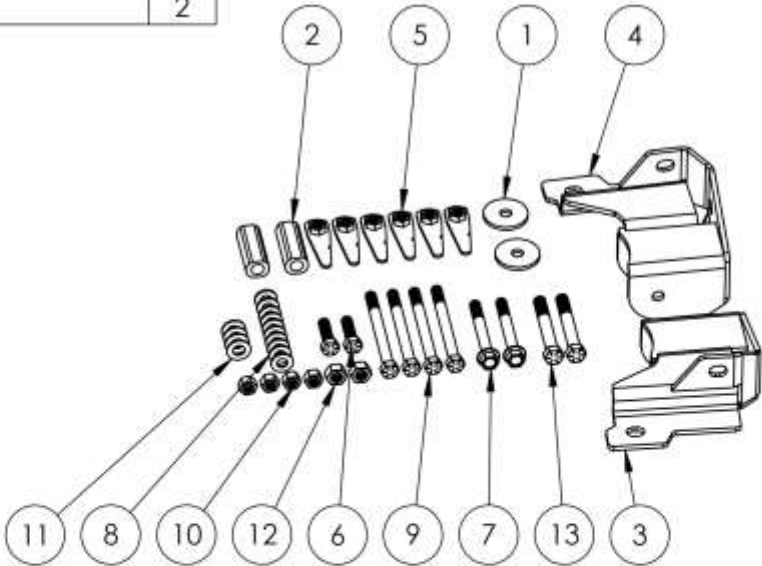
**QUESTIONS:** Any questions or comments about the instructions? Call us at 916-631-8071 M-F 7:00 AM – 5:00 PM PST.

Section 2: Product Components



DC-0001 Rev B

SHEET 1 OF 2

	1	2	3	4	5	6	7	8																																													
E	<table> <tr> <th>ITEM.</th><th>PART NUMBER / DESCRIPTION</th><th>QTY.</th></tr> <tr> <td>1</td><td>SS-0277 WASHER PLATE, 4-LINK MOUNT, FRONT JK</td><td>2</td></tr> <tr> <td>2</td><td>SS-0278 CRUSH SLEEVE, 4-LINK MOUNT, FRONT JK</td><td>2</td></tr> <tr> <td>3</td><td>WM-5883 WELDMENT, LONG ARM LOWER MOUNT, FRONT JK</td><td>1</td></tr> <tr> <td>4</td><td>WM-5883-P WELDMENT, LOCK-N-LOAD ARM MOUNT, FRONT JK</td><td>1</td></tr> <tr> <td>5</td><td>WM-5885 WELDMENT, .5-13 FLAG NUT</td><td>6</td></tr> <tr> <td colspan="3">HK-7283</td></tr> <tr> <td>6</td><td>FS-08173 HHCS, 0.5-13 x 1.75L STL G8 ZINC FULL THREAD</td><td>2</td></tr> <tr> <td>7</td><td>FS-08187 HHCS FLANGE, 0.5-13 X 4.0L STL G8 ZINC</td><td>2</td></tr> <tr> <td>8</td><td>FS-08307 WASHER, 0.53ID X 1.06OD X 0.20TH STL GR8 GOLD ZINC</td><td>10</td></tr> <tr> <td>9</td><td>FS-08349 HHCS, 0.5-13 X 5.5L STL G8 GOLD ZINC</td><td>4</td></tr> <tr> <td>10</td><td>FS-08359 TOPLOCK NUT, 0.5-13 X .44H STL GC STL ZINC</td><td>4</td></tr> <tr> <td>11</td><td>FS-09119 WASHER, 0.59ID X 1.16OD 0.10TH STL GOLD ZINC</td><td>4</td></tr> <tr> <td>12</td><td>FS-09305 TOPLOCK NUT, 0.56-18 X .48H STL GC STL ZINC</td><td>2</td></tr> <tr> <td>13</td><td>FS-09313 HHCS, 0.56-18 X 4.0L STL GOLD ZINC</td><td>2</td></tr> </table>								ITEM.	PART NUMBER / DESCRIPTION	QTY.	1	SS-0277 WASHER PLATE, 4-LINK MOUNT, FRONT JK	2	2	SS-0278 CRUSH SLEEVE, 4-LINK MOUNT, FRONT JK	2	3	WM-5883 WELDMENT, LONG ARM LOWER MOUNT, FRONT JK	1	4	WM-5883-P WELDMENT, LOCK-N-LOAD ARM MOUNT, FRONT JK	1	5	WM-5885 WELDMENT, .5-13 FLAG NUT	6	HK-7283			6	FS-08173 HHCS, 0.5-13 x 1.75L STL G8 ZINC FULL THREAD	2	7	FS-08187 HHCS FLANGE, 0.5-13 X 4.0L STL G8 ZINC	2	8	FS-08307 WASHER, 0.53ID X 1.06OD X 0.20TH STL GR8 GOLD ZINC	10	9	FS-08349 HHCS, 0.5-13 X 5.5L STL G8 GOLD ZINC	4	10	FS-08359 TOPLOCK NUT, 0.5-13 X .44H STL GC STL ZINC	4	11	FS-09119 WASHER, 0.59ID X 1.16OD 0.10TH STL GOLD ZINC	4	12	FS-09305 TOPLOCK NUT, 0.56-18 X .48H STL GC STL ZINC	2	13	FS-09313 HHCS, 0.56-18 X 4.0L STL GOLD ZINC	2
ITEM.	PART NUMBER / DESCRIPTION	QTY.																																																			
1	SS-0277 WASHER PLATE, 4-LINK MOUNT, FRONT JK	2																																																			
2	SS-0278 CRUSH SLEEVE, 4-LINK MOUNT, FRONT JK	2																																																			
3	WM-5883 WELDMENT, LONG ARM LOWER MOUNT, FRONT JK	1																																																			
4	WM-5883-P WELDMENT, LOCK-N-LOAD ARM MOUNT, FRONT JK	1																																																			
5	WM-5885 WELDMENT, .5-13 FLAG NUT	6																																																			
HK-7283																																																					
6	FS-08173 HHCS, 0.5-13 x 1.75L STL G8 ZINC FULL THREAD	2																																																			
7	FS-08187 HHCS FLANGE, 0.5-13 X 4.0L STL G8 ZINC	2																																																			
8	FS-08307 WASHER, 0.53ID X 1.06OD X 0.20TH STL GR8 GOLD ZINC	10																																																			
9	FS-08349 HHCS, 0.5-13 X 5.5L STL G8 GOLD ZINC	4																																																			
10	FS-08359 TOPLOCK NUT, 0.5-13 X .44H STL GC STL ZINC	4																																																			
11	FS-09119 WASHER, 0.59ID X 1.16OD 0.10TH STL GOLD ZINC	4																																																			
12	FS-09305 TOPLOCK NUT, 0.56-18 X .48H STL GC STL ZINC	2																																																			
13	FS-09313 HHCS, 0.56-18 X 4.0L STL GOLD ZINC	2																																																			
D																																																					
C																																																					
B																																																					
A	<div> <div> <p>THE INFORMATION CONTAINED ON THIS DRAWING IS THE EXCLUSIVE PROPERTY OF ARMORED WORKS, LLC. UNAUTHORIZED REPRODUCTION IS PROHIBITED.</p> <p><b>DO NOT SCALE DRAWING</b></p> <p><b>PART NUMBER/DESCRIPTION</b></p> <p>7283 LONG ARM LOWER MOUNT, JK FRONT</p> </div> <div> <p><b>Metal Cloak</b></p> <p>A DIVISION OF ARMORED WORKS, LLC</p> </div> </div>																																																				

## Section 3: Installation Instructions



### Step 1: Remove Front Control Arm Brackets

- A. Use a 21mm socket and wrench to remove the stock hardware and front lower control arms. **Save all hardware.**
- B. Choose your tool to remove the front lower control arm bracket at the frame; we use the combination of a plasma torch and a cut off wheel.
- C. Using a grinder grind down the modified areas until flush with the frame.

**Important Note:** *We recommend priming and painting any surfaces that the original finish was removed from for corrosion resistance.*



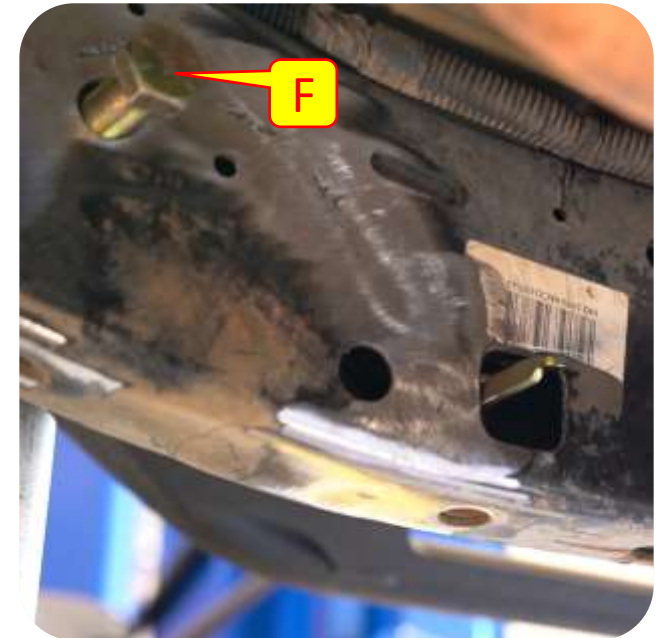


## Section 3: Installation Instructions



### Step 2: Front Lower Control Arm Brackets

- D. Install the frame crush sleeve into the frame with a swing press. Make sure it goes through both sides of the frame and is sitting flush on both sides.
- E. Insert the large dual flag nuts into the frame through the large square hole in the frame. the lower mount will block this access once it is installed.
- F. Loosely install the 3/4 bolts to help hold the flag nut out of the way during the rest of the install of the lower mount.

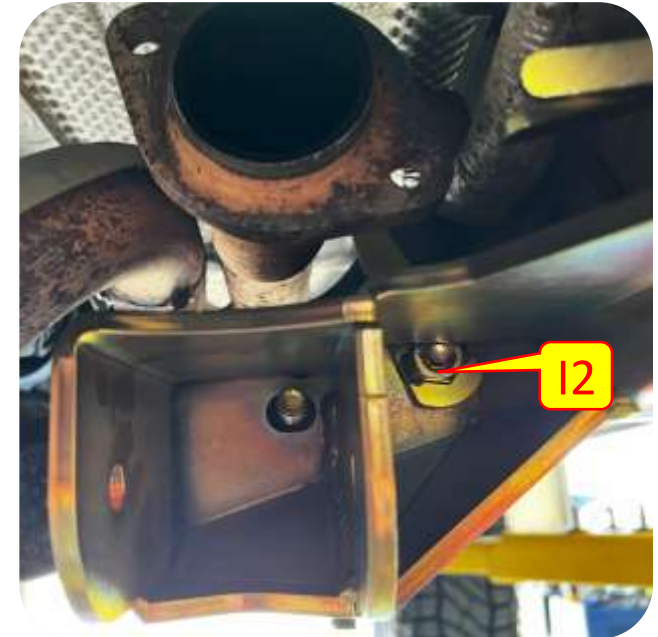


## Section 3: Installation Instructions



### Step 2: Front Lower Control Arm Brackets

- H. Remove the Factory trans skid using 18mm socket.
- I. Support the crossmember with a Jack and remove the two factory bolts from the crossmember using an 18mm socket and wrench.
- J. Install the control arm bracket bolts through the back side of the crossmember and into the bracket and secure with the provide flag nut.



## Section 3: Installation Instructions



### Step 2: Front Lower Control Arm Brackets

- K. Install factory 18mm bolt into frame weld nut or if the weld nut is not equipped use the provided 1/2" bolt into the flag nut installed in step E.
- L. Install the 1/2" flange bolt, through the large frame backing washer. then through the frame Crush sleeve installed earlier using a flag nut on the bracket side and tighten down using a 3/4" in socket.
- M. Using a 3/4" socket tighten the crossmember mount bolts.
- N. Make sure all control arm bracket hardware is fully tightened.
- O. Install front lower control arm.

