



PRODUCT: JL Rear Lower Shock Mount Relocation Kit

REV: B | 02-20-2020 | II-7620

READ INSTRUCTIONS IN FULL BEFORE INSTALLATION.
QUESTIONS? CALL 916-631-8071 M-F 7:00 AM – 5:00 PM PST

The MetalCloak experience includes the ease of installation of our products. We design for most contingencies, but installation may be different based on different Jeep condition, configuration and/or year.

We are continually trying to improve our products and instructions – please help us by providing feedback and pictures if you find any part of the instructions that do not match your particular Jeep or are not easily understandable.

If you have any difficulties at all, please give us a call. Thank you and enjoy your MetalCloak Products!

IMPORTANT NOTE: We use Stainless Steel Hardware where possible. Therefore, a tube of Silver Anti-seize is provided and should be used on all bolts—only a small amount is needed.

WARRANTY INFORMATION: This article is sold without warranty expressed or implied. No warranty or representation is made as to this products ability to protect the user from injury or death. The user assumes that risk. The effectiveness, warranty and longevity of this equipment are directly related to the manner in which it is INSTALLED, USED and/or MAINTAINED. THE USER ASSUMES ALL RISK. By purchasing this product and opening the packaging, purchasers expressly acknowledge, understand and agree that they take, select and purchase these MetalCloak products from Armored Works, LLC, its affiliates and distributors and agents as is and with all faults. The entire risk as to the quality and performance of these MetalCloak products is with the purchaser. Working on your vehicle can be a dangerous activity. If you are unsure of what you are doing, please leave mechanical or safety critical work to a skilled mechanic. We take no responsibility for the incorrect use and/or installation of MetalCloak products.

Section 1: Tools & Notes on Installation



Tools Required: This list is the recommended tools for ease of installation. Other versions of the same tool can be used. For example, Allen Wrenches instead of Allen Drive Sockets.



Socket & Ratchet Wrench

18MM Socket
9/16" Socket



18MM Wrench
9/16" Wrench

Electric Drill/Drill Bits
3/8"



Cutoff Wheel (Optional)

HOW TO USE THIS GUIDE: The installation guide contains ALL steps for installation. Please read and follow the instructions in order of each page top to bottom, and left to right.

Jeep Model: Instructions may apply to multiple Jeep models, but are labeled separately where appropriate (i.e. TJ vs. LJ).

Options: Because of the number of component options we offer, these instructions may contain steps that will not match your particular configuration. You can skip these steps.

Images: Pictures are provided and parts are labeled throughout the instructions. Each text box contains guidance based on the pictures next to it. The text will refer to alphabetical labels (A, B, etc.) found in the images.

Installation Notes: Terms may be used in the body of the instructions that you may not be familiar with, if you have any questions feel free to contact us at the number below, or email techhelp@metalcloak.com

QUESTIONS: Any questions or comments about the instructions? Call us at 916-631-8071 M-F 7:00 AM – 5:00 PM PST.

Section 2: Product Components

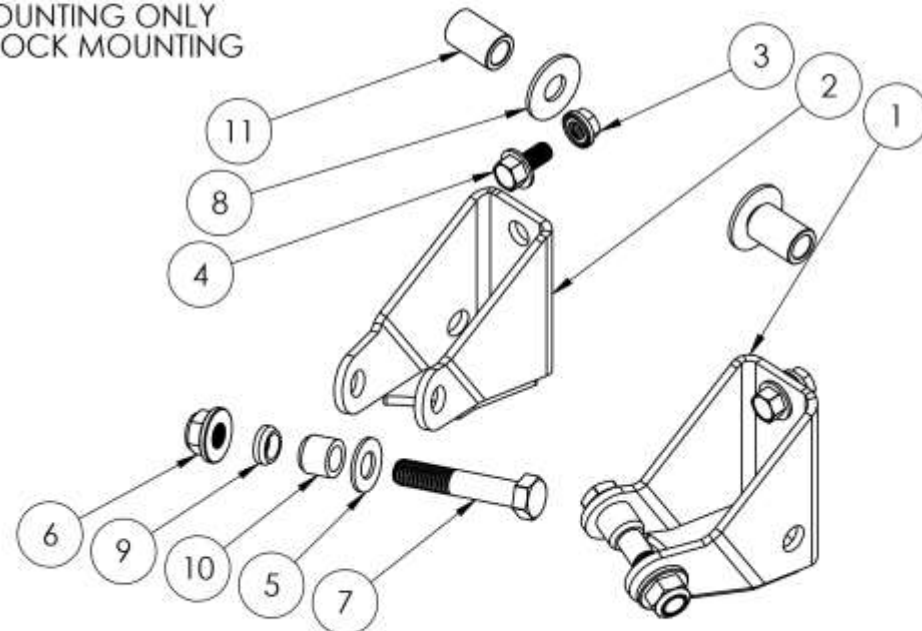
DC-0001 REV A

SHEET 1 OF 2

ITEM	PART NUMBER/DESCRIPTION	QTY.	
1	WM-6223-P WELDMENT, SHOCK MOUNT, JL REAR LOWER	1	
2	WM-6223 WELDMENT, SHOCK MOUNT, JL REAR LOWER	1	
E			
HK-7620 [INTERNAL]			
3	FS-06053 SERRATED FLANGE LOCK NUT, 0.38-16 X 0.34H STL GF ZINC	2	
4	FS-06104 HHCS SERRATED FLANGE, 0.38-16 X 0.75L STL G5 ZINC	2	
5	FS-08023 WASHER, 0.53ID X 1.06OD X 0.10TH STL ZINC	2	
6	FS-08127 NYLOCK FLANGE NUT, 0.5-13 X 0.56H STL GF ZINC	2	
7	FS-08134 HHCS, 0.5-13 X 2.75L STL G8 ZINC	2	
8	FS-09032 WASHER, 0.56ID X 1.38OD X 0.11TH STL ZINC	2	
9	SS-0040-022 SPACER, SHOCK MOUNT .5 ID X .75 OD	2	
D	10	SS-0040-064 SPACER, SHOCK MOUNT .5 ID X .75 OD	2
	11	SS-0042 SPACER, SHOCK MOUNT .5ID X .75OD X 1.13L	2

NOTES:

- 1) SS-0040-022 AND SS-0040-064 ARE FOR 6PAK MOUNTING ONLY
- 2) SS-0042 AND FS-09032 NOT USED FOR STOCK SHOCK MOUNTING



THE INFORMATION CONTAINED ON THIS DRAWING IS THE EXCLUSIVE PROPERTY OF ARMORED WORKS, LLC. UNAUTHORIZED REPRODUCTION IS PROHIBITED.

DO NOT SCALE DRAWING

PART NUMBER/DESCRIPTION

Metal Cloak

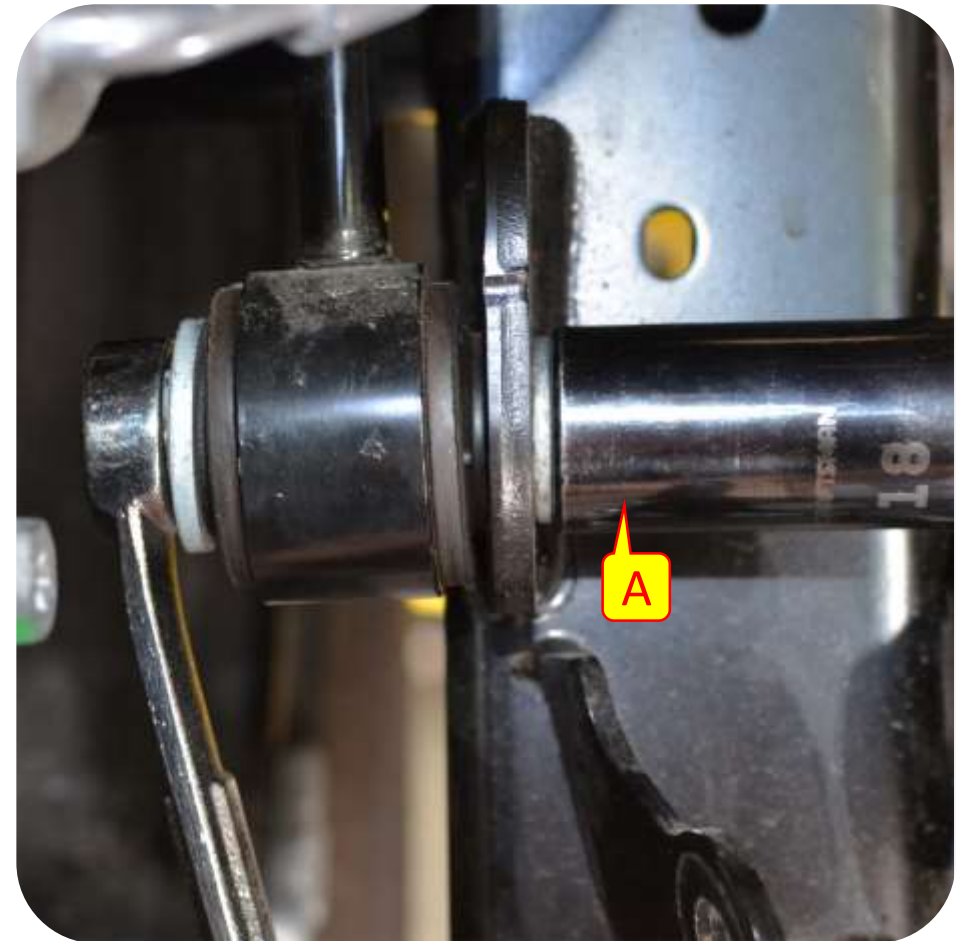
A DIVISION OF ARMORED WORKS, LLC

7620 SHOCK MOUNT BRACKETS, JL REAR

Section 3: Installation Instructions

Step 1: Disconnect Stock Components

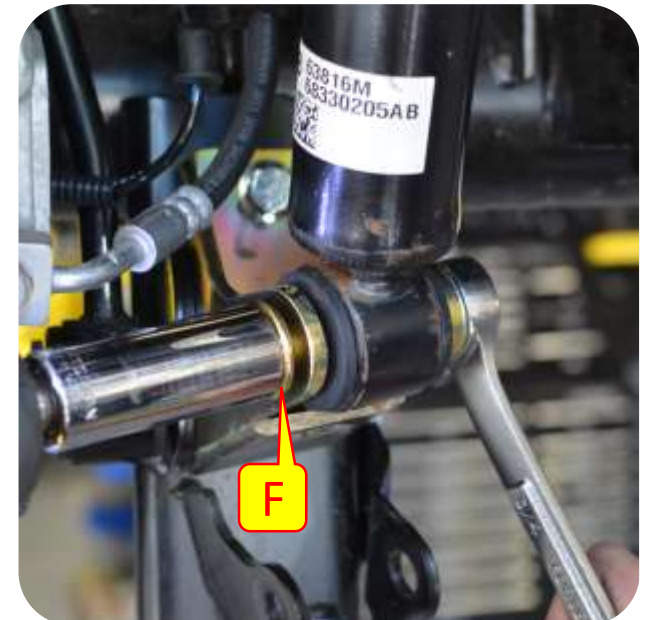
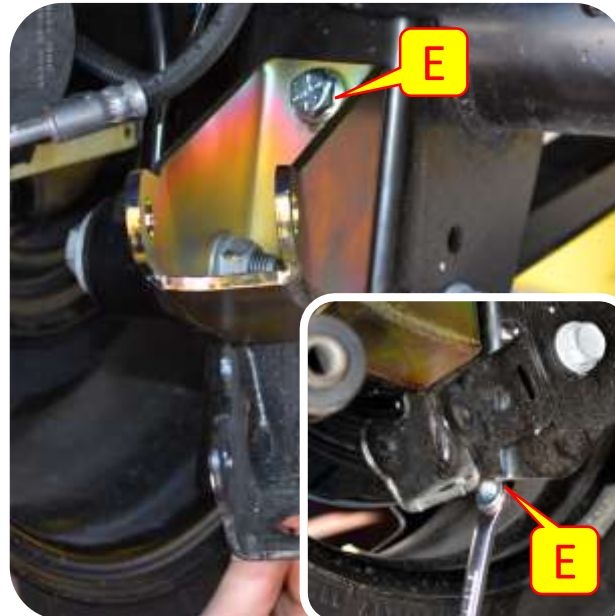
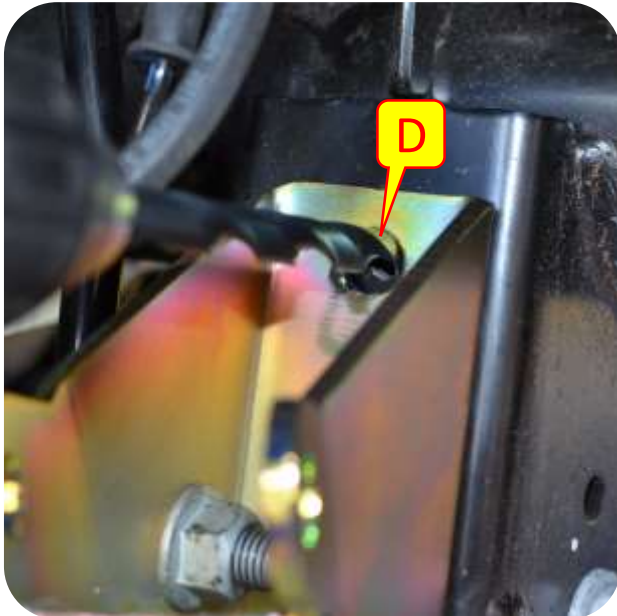
- A. Using a 18mm Socket and Wrench disconnect the shock from the bottom stock shock mount.
- B. Using a 18mm Socket and Wrench disconnect the lower part of the rear sway bar from the stock shock mount (*keep hardware*).



Section 3: Installation Instructions

Step 2: Install Sway Bar End Links (Shock Option 1)

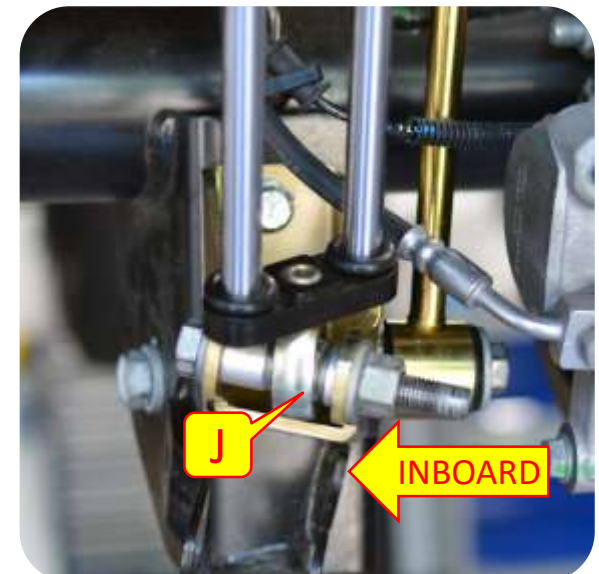
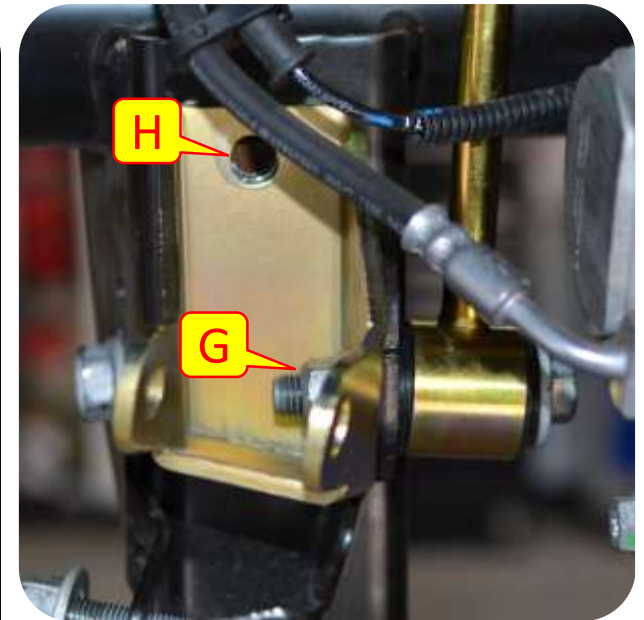
- C. Align the MetalCloak rear shock relocation bracket and reinstall the sway bar using a 18mm socket and wrench.
- D. Using a drill and 3/8" drill bit drill out the shock mounts upper hole
- E. Using a 9/16" socket and wrench install the shock mount upper bolt. You must go from behind and underneath the stock shock mount to reach the hole with the nut and wrench.
- F. Using the provided hardware install the stock shock or RockSport shock into the new mount using a 18mm Socket and wrench.



Section 3: Installation Instructions

Step 2: Install Sway Bar End Links (Shock Option 2)

- G. Align the MetalCloak rear shock relocation bracket and install the sway bar end link using a 18mm socket and wrench.
- H. Using a drill and 3/8" drill bit drill out the shock mounts upper hole
- I. Using a 9/16" socket and wrench install the shock mount upper bolt. You must go from behind and underneath the stock shock mount to reach the hole with the nut and wrench.
- J. Using the stock hardware install the shock into the new mount using a 18MM Socket and wrench. Make sure the large spacer is on the inboard side of the shock and the thinner spacer is on the outboard side.



Section 3: Installation Instructions



Step 3: Install 6Pak Bushing End

K. Using the stock hardware install the upper part of the 6Pak shock (bushing end) making sure to add the washer and spacer on the INBOARD side.



Optional Step



Important Note: For maximum ground clearance you may trim the lower stock shock mount bracket. This is optional.