



PRODUCT: JL Front Control Arm Drop Bracket

REV: C | 04-04-2024 | II-7674

READ INSTRUCTIONS IN FULL BEFORE INSTALLATION.

QUESTIONS? CALL 916-631-8071 M-F 7:00 AM – 5:00 PM PST

The MetalCloak experience includes the ease of installation of our products. We design for most contingencies, but installation may be different based on different Jeep condition, configuration and/or year.

We are continually trying to improve our products and instructions – please help us by providing feedback and pictures if you find any part of the instructions that do not match your particular Jeep or are not easily understandable.

If you have any difficulties at all, please give us a call. Thank you and enjoy your MetalCloak Products!

IMPORTANT NOTE: We use Stainless Steel Hardware where possible. Therefore, a tube of Silver Anti-seize is provided and should be used on all bolts—only a small amount is needed.

WARRANTY INFORMATION: This article is sold without warranty expressed or implied. No warranty or representation is made as to this products ability to protect the user from injury or death. The user assumes that risk. The effectiveness, warranty and longevity of this equipment are directly related to the manner in which it is INSTALLED, USED and/or MAINTAINED. THE USER ASSUMES ALL RISK. By purchasing this product and opening the packaging, purchasers expressly acknowledge, understand and agree that they take, select and purchase these MetalCloak products from Armored Works, LLC, its affiliates and distributors and agents as is and with all faults. The entire risk as to the quality and performance of these MetalCloak products is with the purchaser. Working on your vehicle can be a dangerous activity. If you are unsure of what you are doing, please leave mechanical or safety critical work to a skilled mechanic. We take no responsibility for the incorrect use and/or installation of MetalCloak products.

Section 1: Tools & Notes on Installation



Tools Required: This list is the recommended tools for ease of installation. Other versions of the same tool can be used. For example, Allen Wrenches instead of Allen Drive Sockets.



Socket & Ratchet Wrench

12MM Socket 18MM Socket
21MM Socket 3/4" Socket
15/16" Socket



18MM Wrench 24MM Wrench
3/4" Wrench 15/16" Wrench

Socket Extension

8MM Allen Socket

HOW TO USE THIS GUIDE: The installation guide contains ALL steps for installation. Please read and follow the instructions in order of each page top to bottom, and left to right.

Jeep Model: Instructions may apply to multiple Jeep models, but are labeled separately where appropriate (i.e. TJ vs. LJ).

Options: Because of the number of component options we offer, these instructions may contain steps that will not match your particular configuration. You can skip these steps.

Images: Pictures are provided and parts are labeled throughout the instructions. Each text box contains guidance based on the pictures next to it. The text will refer to alphabetical labels (A, B, etc.) found in the images.

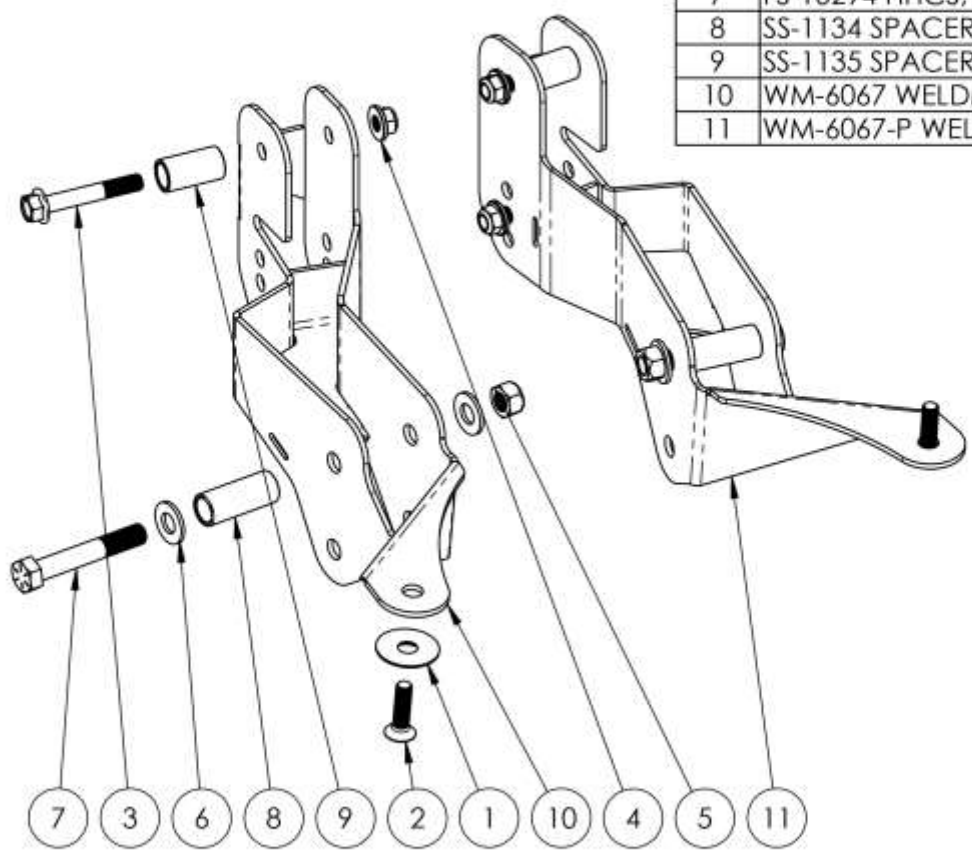
Installation Notes: Terms may be used in the body of the instructions that you may not be familiar with, if you have any questions feel free to contact us at the number below, or email techhelp@metalcloak.com

QUESTIONS: Any questions or comments about the instructions? Call us at 916-631-8071 M-F 7:00 AM – 5:00 PM PST.

Section 2: Product Components

DC-0001 Rev B

SHEET 1 OF 1

	1	2	3	4	5	6	7	8	
	ITEM	PART NUMBER/DESCRIPTION							QTY.
	1	CP-6085 BEVELLED SKID WASHER, 90DEG							2
	2	FM-12188 SFHCS, M12-1.5 X 45L STL C10.9 CLEAR ZINC							2
	3	FS-08125 HHCS FLANGE, 0.5-13 X 3.25L STL G8 ZINC							3
	4	FS-08127 NYLOCK FLANGE NUT, 0.5-13 X 0.56H STL GF ZINC							3
	5	FS-10130 TOPLOCK NUT, 0.63-18 X 0.55H STL GC CAD							2
	6	FS-10161 WASHER, 0.66ID X 1.31OD X 0.14TH STL GR8 GOLD ZINC							4
	7	FS-10294 HHCS, 0.63-18 X 4.0L STL G8 ZINC							2
	8	SS-1134 SPACER, CONTROL ARM DROP, LOWER JK							2
	9	SS-1135 SPACER, CONTROL ARM DROP, UPPER FRONT JK							2
	10	WM-6067 WELDMENT, 3IN DROP BRACKET, FRONT JL							1
11	WM-6067-P WELDMENT, 3IN DROP BRACKET, FRONT JL							1	

THE INFORMATION CONTAINED ON THIS DRAWING IS THE EXCLUSIVE PROPERTY OF ARMORED WORKS, LLC. UNAUTHORIZED REPRODUCTION IS PROHIBITED.

DO NOT SCALE DRAWING

PART NUMBER/DESCRIPTION

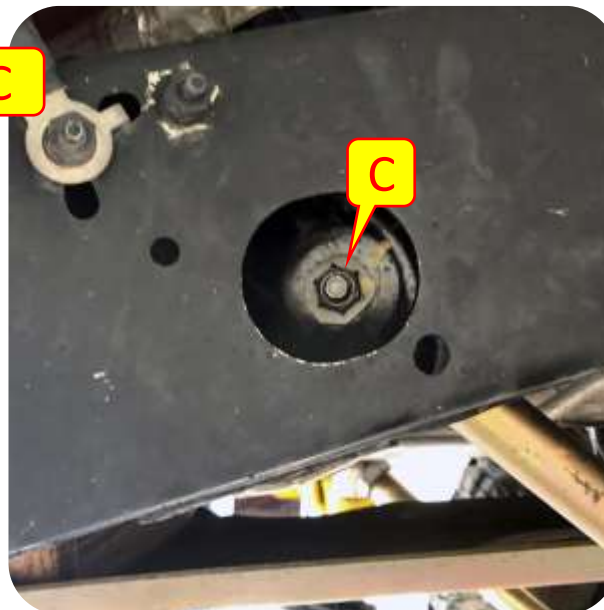
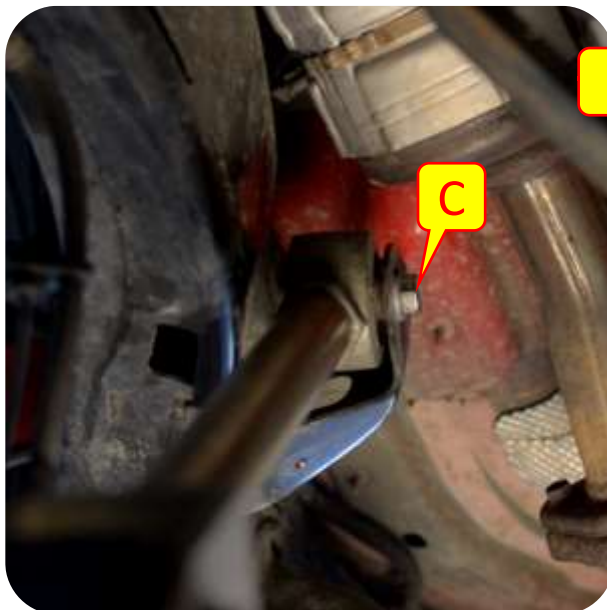
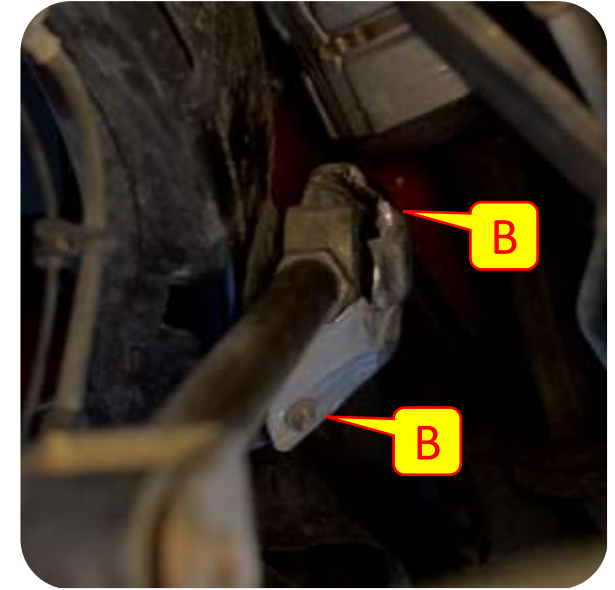
7674 CONTROL ARM 3IN DROP BRACKET KIT, JL FRONT

Metal Cloak
A DIVISION OF ARMORED WORKS, LLC

Section 3: Installation Instructions

Step 1: Disconnect Components

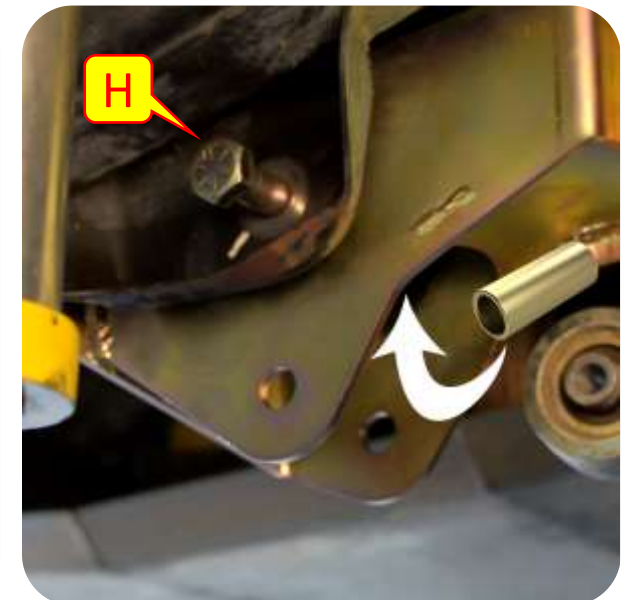
- A. If using a lift use a 21mm socket and wrench disconnect the frame side of the track bar. **Save Hardware.**
- B. Using a 10mm socket remove the heat shield from the upper control arm at the frame.
- C. Using a 18mm deep socket and wrench disconnect the upper control arm at the frame. **Save Hardware.**
- D. Using a 18mm socket remove the stock frame bolt.



Section 3: Installation Instructions

Step 2: Install Drop Bracket

- E. Using a 21mm socket and a 24mm wrench disconnect the lower control arm at the frame. **Save Hardware.**
- F. Place the drop bracket to the frame and use the provided countersunk bolt (*8mm allen*) and skid washer to attach the bracket to the frame in the stock location. **Do not fully tighten.**
- G. Using the provided smaller spacer and hardware (*3/4" socket and wrench*) loosely install the upper part of the drop bracket into the stock control arm bracket location.
- H. Using the provided larger spacer and bolt (*15/16" Socket and Wrench*), nut, and washers loosely install the lower part of the drop bracket into the lower stock control arm bracket location.
- I. Tighten all drop bracket hardware.



Section 3: Installation Instructions

Step 3: Install Control Arms

Note: The upper front control arm hole location depends on the size of your lift. The upper hole is for 2.5" lifts the middle hole is for 3.5" lifts and the bottom hole is for 4.5" lifts.

- J. Using the stock hardware (18mm socket and wrench) install the upper front control arms into the drop bracket.
- K. Using the stock hardware (21mm socket and 24mm wrench) install the lower front control arms into the drop bracket.
- L. Tighten All control arm hardware and torque to spec.
- M. Reinstall the track bar at the frame and torque to spec.
- N. Check axle center and caster.

