



PRODUCT: RAM Sway Bar Quick Disconnects

REV: A | 09-21-2022 | II-8069

READ INSTRUCTIONS IN FULL BEFORE INSTALLATION.

QUESTIONS? CALL 916-631-8071 M-F 7:00 AM – 5:00 PM PST

The MetalCloak experience includes the ease of installation of our products. We design for most contingencies, but installation may be different based on different vehicle condition, configuration and/or year.

We are continually trying to improve our products and instructions – please help us by providing feedback and pictures if you find any part of the instructions that do not match your particular vehicle or are not easily understandable.

If you have any difficulties at all, please give us a call. Thank you and enjoy your MetalCloak Products!

IMPORTANT NOTE: We use Stainless Steel Hardware where possible. Therefore, a tube of Silver Anti-seize is provided and should be used on all bolts—only a small amount is needed.

WARRANTY INFORMATION: This article is sold without warranty expressed or implied. No warranty or representation is made as to this products ability to protect the user from injury or death. The user assumes that risk. The effectiveness, warranty and longevity of this equipment are directly related to the manner in which it is INSTALLED, USED and/or MAINTAINED. THE USER ASSUMES ALL RISK. By purchasing this product and opening the packaging, purchasers expressly acknowledge, understand and agree that they take, select and purchase these MetalCloak products from Armored Works, LLC, its affiliates and distributors and agents as is and with all faults. The entire risk as to the quality and performance of these MetalCloak products is with the purchaser. Working on your vehicle can be a dangerous activity. If you are unsure of what you are doing, please leave mechanical or safety critical work to a skilled mechanic. We take no responsibility for the incorrect use and/or installation of MetalCloak products.

Section 1: Tools & Notes on Installation



Tools Required: This list is the recommended tools for ease of installation. Other versions of the same tool can be used. For example, Allen Wrenches instead of Allen Drive Sockets.



Socket & Ratchet Wrench

8mm Wrench 10mm Wrench
18mm Wrench 21mm Wrench
7/8" Wrench 7/16" Wrench
3/4" Wrench 1/2" Wrench
1 1/8" Wrench



11/32" Drill Bits & Drill

5/8" Socket
1/2" Socket
3/4" Socket



HOW TO USE THIS GUIDE: The installation guide contains ALL steps for installation. Please read and follow the instructions in order of each page top to bottom and left to right.

Ram Model: Instructions may apply to multiple truck models but are labeled separately where appropriate.

Options: Because of the number of component options we offer, these instructions may contain steps that will not match your particular configuration. You can skip these steps.

Images: Pictures are provided, and parts are labeled throughout the instructions. Each text box contains guidance based on the pictures next to it. The text will refer to alphabetical labels (A, B, etc.) found in the images.

Installation Notes: Terms may be used in the body of the instructions that you may not be familiar with, if you have any questions feel free to contact us at the number below, or email techhelp@metalcloak.com

QUESTIONS: Any questions or comments about the instructions? Call us at 916-631-8071 M-F 7:00 AM – 5:00 PM PST.

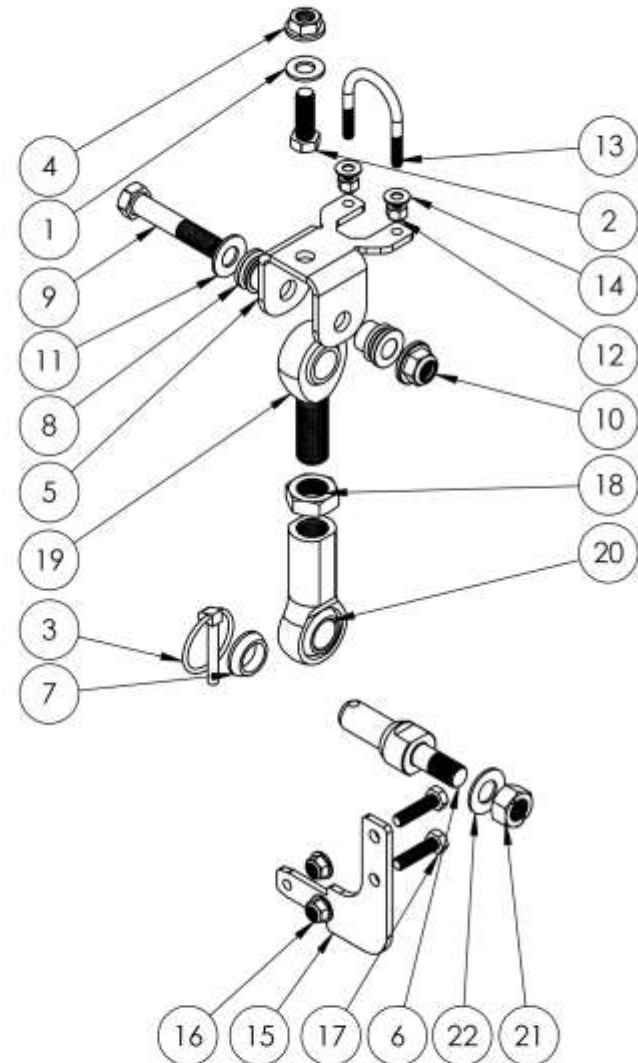
Section 2: Product Components



DC-0001 Rev B

SHEET 1 OF 1

| ITEM NO. | PART NUMBER | QTY. |
|----------|--|------|
| 1 | FS-07281 WASHER, 0.47ID X 0.92OD X 0.06TH STL ZINC | 1 |
| 2 | FS-07066 HHCS, .44-16 X 1.25L STL G8 ZINC | 1 |
| 3 | FA-6277 LINCH PIN, 0.25OD X 1.25L STL ZINC | 1 |
| 4 | FS-07059 SERRATED FLANGE LOCK NUT, 0.44-14 X 0.39H STL GF ZINC | 1 |
| 5 | SS-8101 SWAY BAR BRACKET, SWAY BAR DISCONNECT, RAM 2500 FRONT | 1 |
| 6 | SS-8105 BULLET STUD, SWAY BAR DISCONNECT, RAM 2500 FRONT | 1 |
| 7 | SS-8106 ROD END SPACER, SWAY BAR DISCONNECT, RAM 2500 FRONT | 1 |
| 8 | CP-3713 ROD END SPACER, .51ID | 2 |
| 9 | FS-08134 HHCS, 0.5-13 X 2.75L STL G8 ZINC | 1 |
| 10 | FS-08127 NYLOCK FLANGE NUT, 0.5-13 X 0.56H STL GF ZINC | 1 |
| 11 | FS-08023 WASHER, 0.53ID X 1.06OD X 0.10TH STL ZINC | 1 |
| 12 | FS-04005 NYLOCK NUT, 0.25-20 X 0.31H STL GF ZINC | 2 |
| 13 | FS-04163 U-BOLT, 0.25-20 X D1.38 X 2.0L STL B7 ZINC | 1 |
| 14 | FS-04003 WASHER, 0.28ID X 0.63OD X 0.05TH SS 18-8 | 2 |
| 15 | SS-8104 DISCONNECT BRACKET, SWAY BAR DISCONNECT | 1 |
| 16 | FS-05250 NYLOCK FLANGE NUT, 0.31-18 X 0.34H STL GF ZINC | 2 |
| 17 | FS-05194 HHCS, 0.31-18 X 1.25L STL G5 ZINC | 2 |
| 18 | FS-12128 JAM NUT, 0.75-16 X 0.42H STL G5 ZINC | 1 |
| 19 | SS-8103 SPHERICAL JOINT ROD END, 0.75-16 X 0.88ID X 1.75L | 1 |
| 20 | SS-8107 SPHERICAL JOINT ROD END, FEMALE, 0.75-16 X 1.562 THREAD LENGTH | 1 |
| 21 | FS-09305 TOPLOCK NUT, 0.56-18 X .48H STL GC STL ZINC | 1 |
| 22 | FS-09119 WASHER, 0.59ID X 1.16OD 0.10TH STL GOLD ZINC | 1 |



THE INFORMATION CONTAINED ON THIS DRAWING IS THE EXCLUSIVE PROPERTY OF ARMORED WORKS, LLC. UNAUTHORIZED REPRODUCTION IS PROHIBITED.



DO NOT SCALE DRAWING

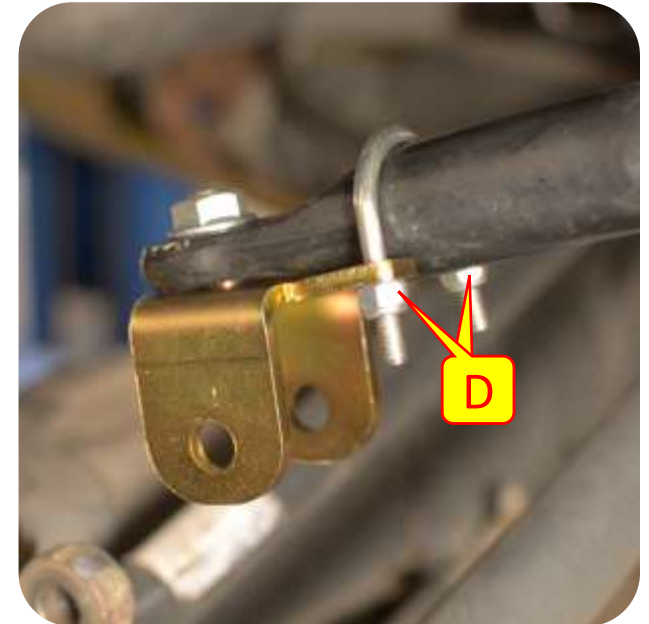
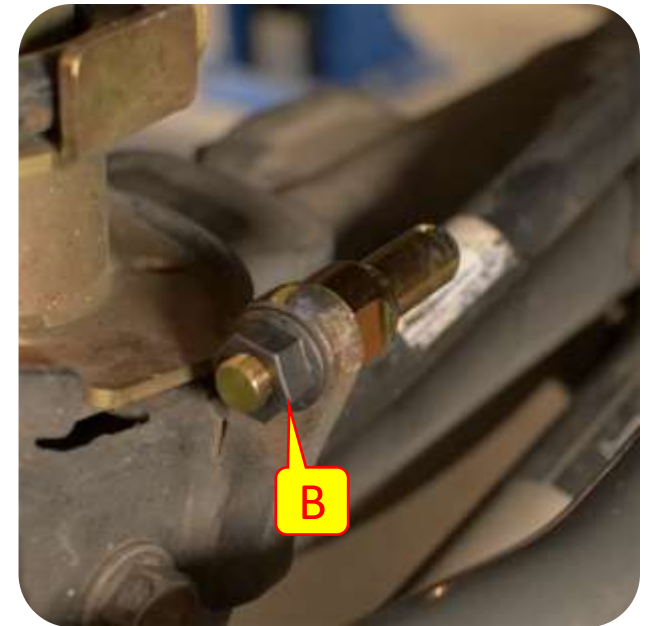
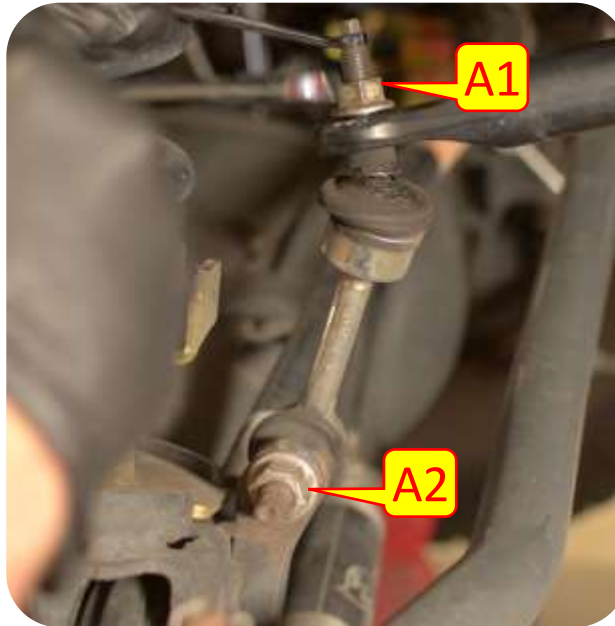
PART NUMBER/DESCRIPTION

8069 SWAY BAR QUICK DISCONNECT, RAM 2500 FRONT

Section 3: Installation Instructions

Step 1: Disconnect Stock Ram Sway Bar End Links

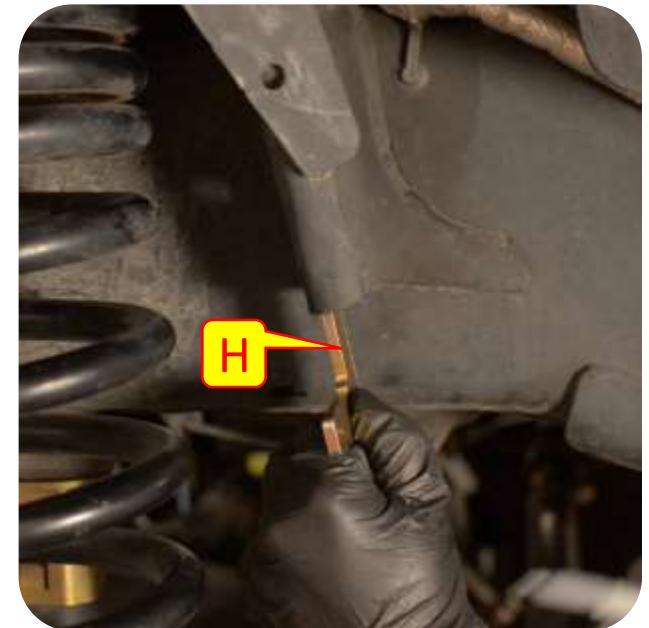
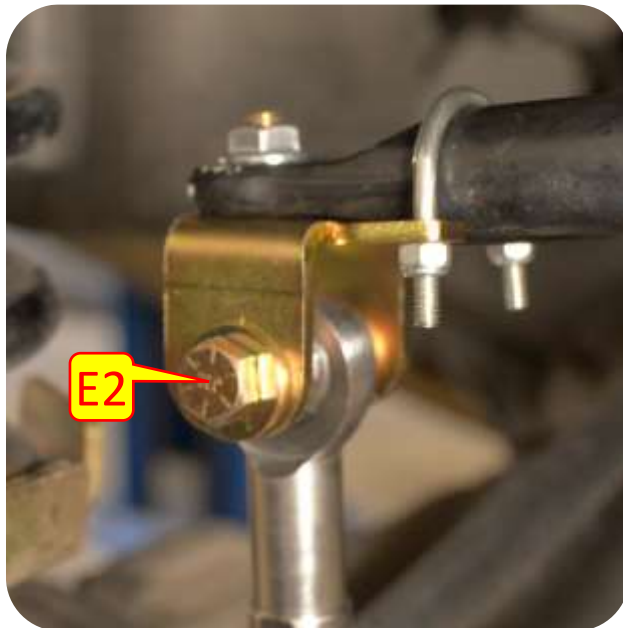
- A. Remove the factory sway bar end links using an 18mm and 8mm (A1) wrench at the sway bar, and a 21mm and 10mm wrench (A2) at the axle.
- B. Place the bullet stud at the axle, facing inward. Tighten with a 7/8" wrench.
- C. Place the sway bar bracket on the sway bar and insert the provided 5/8" hardware through the bracket and sway bar. Tighten down using a 5/8" socket and 7/16" wrench.
- D. Place the provided U-bolt over the top of the sway bar and through the sway bar bracket. Then add the provided washers and bolts to the U-bolt. Tighten down with a 7/16" wrench.



Section 3: Installation Instructions

Step 2: Install Front Bump Stops

- E. Insert the rod end spacers into the sway bar end link (E1) and place the end link into the sway bar bracket. Insert the provided 3/4" hardware through both the bracket and end link (E2).
- F. Repeat steps 1-5 on the opposite side.
- G. Adjust the sway bars so they both fit onto the bullet stud, then disconnect them from the bullet stud.
- H. Place the disconnect bracket onto the front coil bucket bracket so that the disconnects can easily be placed on and off.



Section 3: Installation Instructions

Step 2: Install Front Bump Stops

- I. Mark the mounting locations (I1) and drill using a 11/32 drill bit (I2).
- J. Install the provided hardware and tight down using a 1/2" socket and wrench.
- K. Reattach the end links to the bullet stud with the end spacer (K1) and insert the lynch pin (K2).
- L. Make sure all hardware is tight and tighten down the jam nut using a 1 1/8" wrench.

