



## PRODUCT: Bronco Front Bumper System

REV: A | 05-30-2023 | II-B0205

**READ INSTRUCTIONS IN FULL BEFORE INSTALLATION.**

**QUESTIONS? CALL 916-631-8071 M-F 7:00 AM – 5:00 PM PST**

The MetalCloak experience includes the ease of installation of our products. We design for most contingencies, but installation may be different based on different Bronco condition, configuration and/or year.

We are continually trying to improve our products and instructions – please help us by providing feedback and pictures if you find any part of the instructions that do not match your Bronco or are not easily understandable.

If you have any difficulties at all, please give us a call. Thank you and enjoy your MetalCloak Products!

**IMPORTANT NOTE: We use Stainless Steel Hardware where possible. Therefore, a tube of Silver Anti-seize is provided and should be used on all bolts—only a small amount is needed.**

**WARRANTY INFORMATION:** This article is sold without warranty expressed or implied. No warranty or representation is made as to this products ability to protect the user from injury or death. The user assumes that risk. The effectiveness, warranty and longevity of this equipment are directly related to the manner in which it is INSTALLED, USED and/or MAINTAINED. THE USER ASSUMES ALL RISK. By purchasing this product and opening the packaging, purchasers expressly acknowledge, understand and agree that they take, select and purchase these MetalCloak products from Armored Works, LLC, its affiliates and distributors and agents as is and with all faults. The entire risk as to the quality and performance of these MetalCloak products is with the purchaser. Working on your vehicle can be a dangerous activity. If you are unsure of what you are doing, please leave mechanical or safety critical work to a skilled mechanic. We take no responsibility for the incorrect use and/or installation of MetalCloak products.

## Section 1: Tools & Notes on Installation

### Tools Required:



Socket & Ratchet Wrench

13mm Socket    15mm Socket  
18mm Socket    1/2" Socket  
3/4" Socket      7/8" Socket



T40 Torx Wrench

5/32" Allen Wrench  
7/32" Allen Wrench



**HOW TO USE THIS GUIDE:** The installation guide contains ALL steps for installation. Please read and follow the instructions in order of each page top to bottom and left to right.

**Model:** Instructions may apply to multiple Bronco models but are labeled separately where appropriate.

**Options:** Because of the number of component options we offer, these instructions may contain steps that will not match your particular configuration. You can skip these steps.

**Images:** Pictures are provided, and parts are labeled throughout the instructions. Each text box contains guidance based on the pictures next to it. The text will refer to alphabetical labels (A, B, etc.) found in the images.

**Installation Notes:** Terms may be used in the body of the instructions that you may not be familiar with, if you have any questions feel free to contact us at the number below, or email [techhelp@metalcloak.com](mailto:techhelp@metalcloak.com)

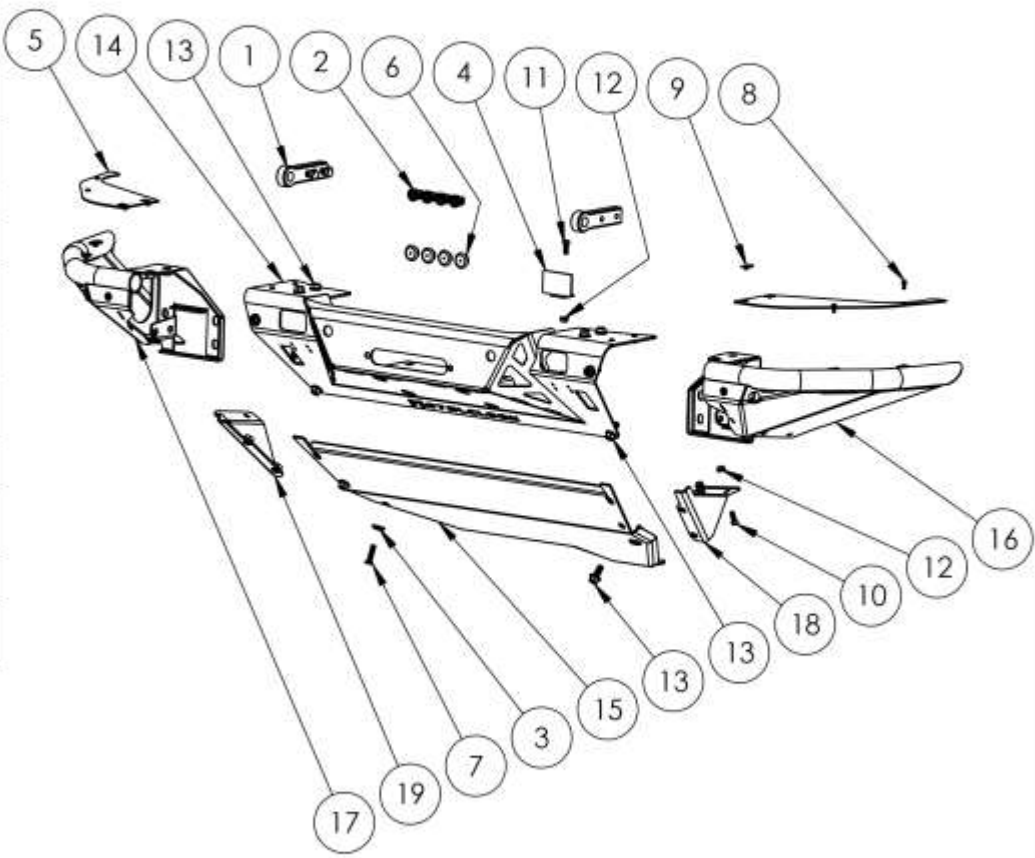
**QUESTIONS:** Any questions or comments about the instructions? Call us at 916-631-8071 M-F 7:00 AM – 5:00 PM PST.

# Section 2: Product Components

DC-0001 Rev B

SHEET 1 OF 1

ITEM	PART NUMBER/DESCRIPTION	QTY.
1	6803 D-RING MOUNTS, REAR JT	1
2	B0204 BUMPER SENSOR RETAINER SET, BRONCO	1
3	CB-0021 BEVELLED SKID WASHER, 10MM	4
4	CB-0049 LIGHT FILL, BUMPER, BRONCO	2
5	CB-0064 TRIM PANEL, BUMPER, FRONT, BRONCO	2
6	FA-0145 HOLE PLUG, 1.00D X 0.63H PLASTIC BLACK	4
7	FM-10120 SFHCS, M10-1.5 X 45L STL C10.9 ZINC	4
8	FS-04021 SBHCS, 0.25-20 X 0.63L SS 18-8 PLAIN	8
9	FS-04267 CLIP-ON NUT, 0.25-20 STL ZINC, 0.03-0.15 PANEL	8
10	FS-06010-BZ SBHCS, 0.38-16 X 1.0L STL G8 BLACK ZINC	4
11	FS-06031 HHCS, 0.38-16 X 1.0L STL G5 ZINC	2
12	FS-06053 SERRATED FLANGE LOCK NUT, 0.38-16 X 0.34H STL GF ZINC	6
13	FS-08219 HHCS FLANGE, 0.5-13 X 1.25L STL G8 ZINC	10
14	WM-8510 WELDMENT, WINCH BODY, BUMPER, FRONT, BRONCO	1
15	WM-8511 WELDMENT, BASH PLATE, BUMPER, FRONT, BRONCO	1
16	WM-8512 HIGH CLEARANCE CAP, BUMPER, FRONT, BRONCO	1
17	WM-8512-P HIGH CLEARANCE CAP, BUMPER, FRONT, BRONCO	1
18	WM-8513 WELDMENT, LOWER CAP FILL, BUMPER, BRONCO	1
19	WM-8513-P WELDMENT, LOWER CAP FILL, BUMPER, BRONCO	1



OPTION 1 (INCLUDE FAIRLEAD)  
3120 FIXED FAIRLEAD, STANDARD

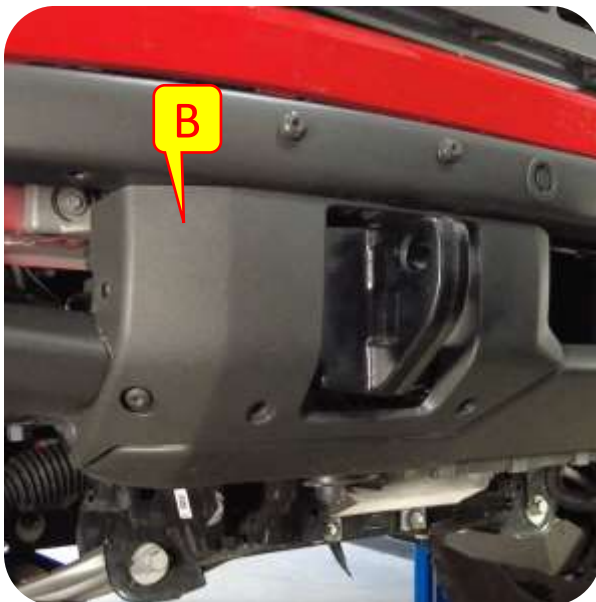
B  
  
  
  
  
  
  
  
  
  
A

THE INFORMATION CONTAINED ON THIS DRAWING IS THE EXCLUSIVE PROPERTY OF ARMORED WORKS, LLC. UNAUTHORIZED REPRODUCTION IS PROHIBITED.  
**DO NOT SCALE DRAWING**  
 A DIVISION OF ARMORED WORKS, LLC  
**PART NUMBER/DESCRIPTION**  
**B0205 BUMPER SYSTEM, WINCH, FRONT, BRONCO**

## Section 3: Installation Instructions

### Step 1: Remove Front Bumper from the Bronco

- A. Remove factory bash plate and bumper using a 15mm socket.
- B. Pull off the front bumper plastic covers.
- C. Using a 18mm socket remove the frame mounting bolts. **Save Hardware.**
- D. Pull the bumper away from the bronco and on the driver side disconnect the plug for the sensors. MetalCloak recommends having a second pair of hands to help remove the bumper.

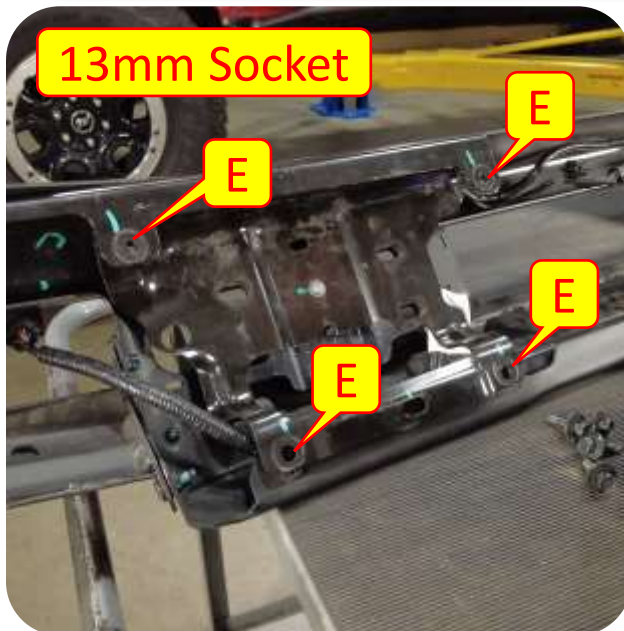




## Section 3: Installation Instructions

### Step 2: Front Bumper Sensor Removal

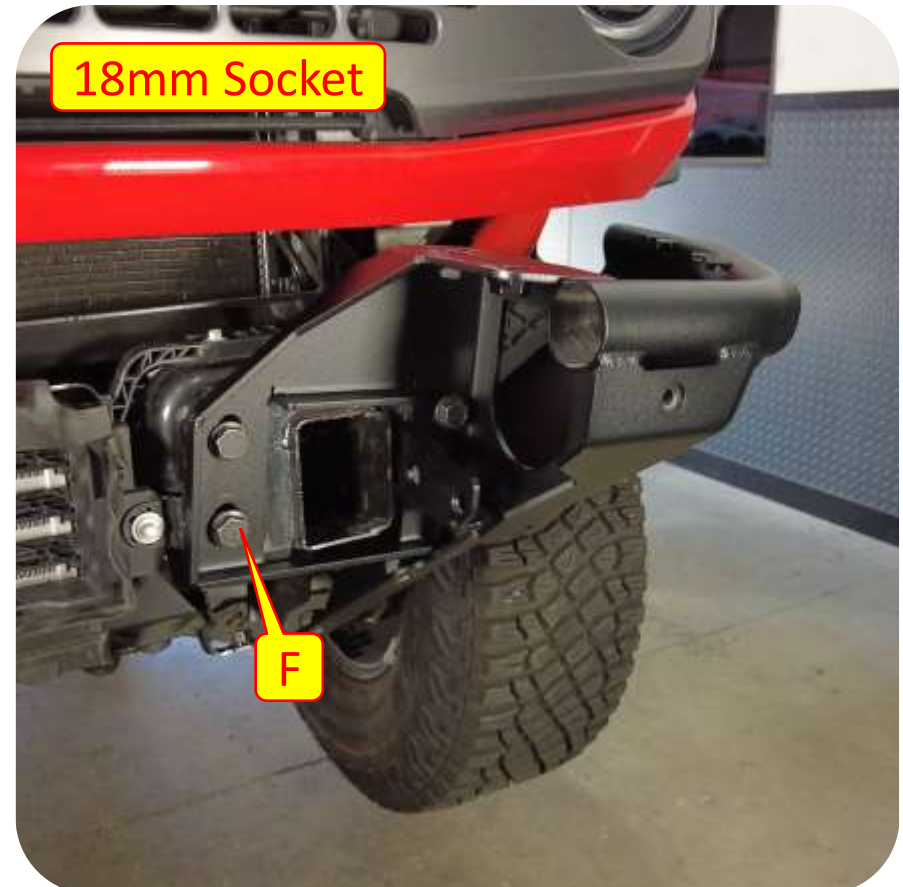
- E. Remove the inner structure of the bumper to access the bumper sensors using a 13mm socket and T40 torx bit.
- F. Remove the bumper sensors from the bumper. Note the position of each sensor and wiring plug location for easier routing later.



## Section 3: Installation Instructions

### Step 3: End Cap Installation

- E. Loosely install the cap fill weldments (*BOM #18 and #19*) into each cap using (*BOM # 10 and 12*) from the hardware kit using the empty holes in the cap fill weldment and the empty holes in the bottom of the caps. The button heads install from the outside of the cap, then through the fill weldment, followed by the serrated nut. Do both passenger and driver side.
- F. Install bumper caps on to frame, reusing stock hardware in to weld nuts in the front of the frame. Tighten the hardware finger-tight (*18mm*), leaving slop for the cap to be adjusted up and down.

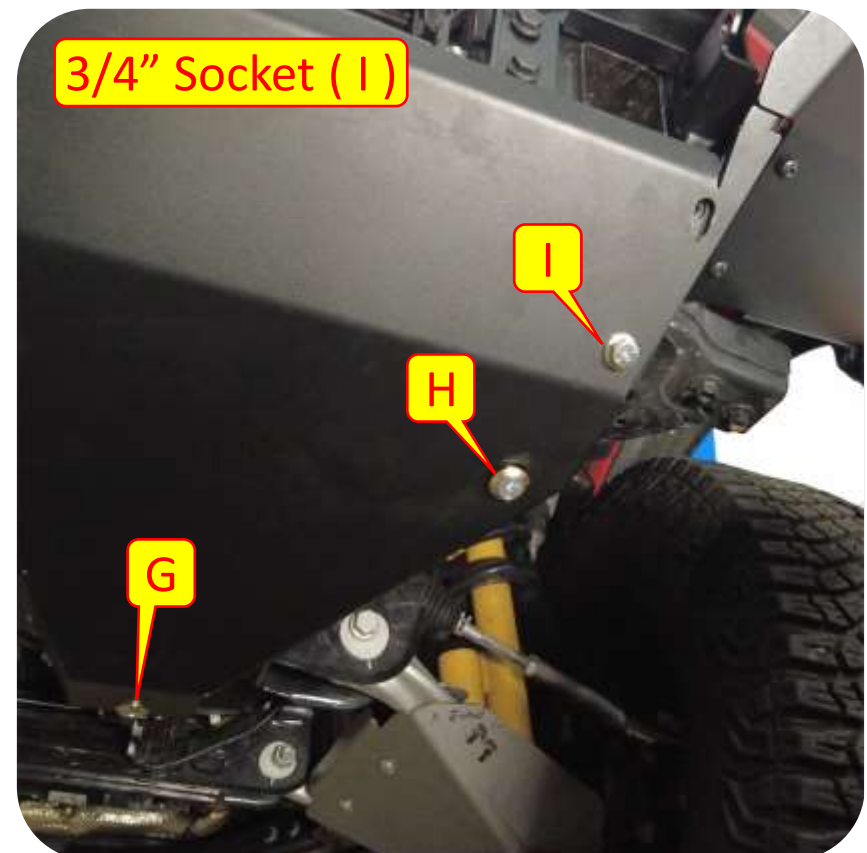
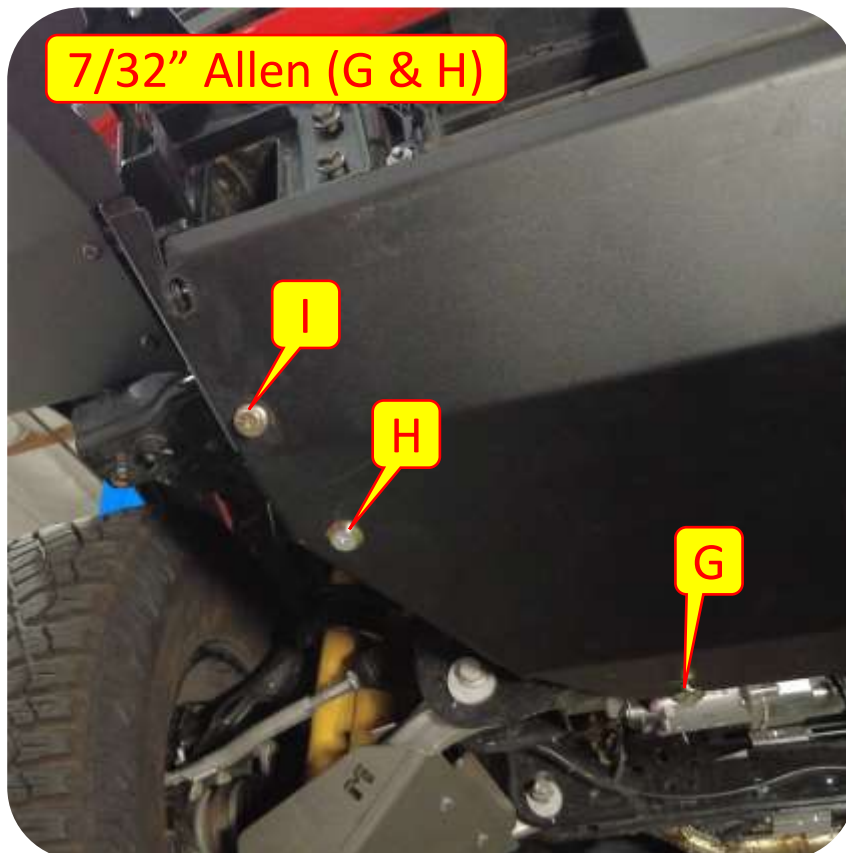


## Section 3: Installation Instructions



### Step 4: Text

- G. Loosely install the new bash plate (*BOM #15*) over the front axle splash guard or MetalCloak axle skids (*if applicable*) then loosely install (*BOM #3 and 7*) in to through bash plate and in to bottom of front crossmember.
- H. Use (*BOM #3 and 7*) to bolt the bash plate to the factory reinforcement brackets (*the triangular brackets bolted to the bottom of the frame rails*). The top two holes on each side of the bash plate should roughly line up with the weld nuts in the cap fill weldments.
- I. Install (*BOM #13*) through the lower set of empty holes in the bash plate and into the weld nuts in the cap fill weldments. The top holes in the bash plate should be left empty at this time.

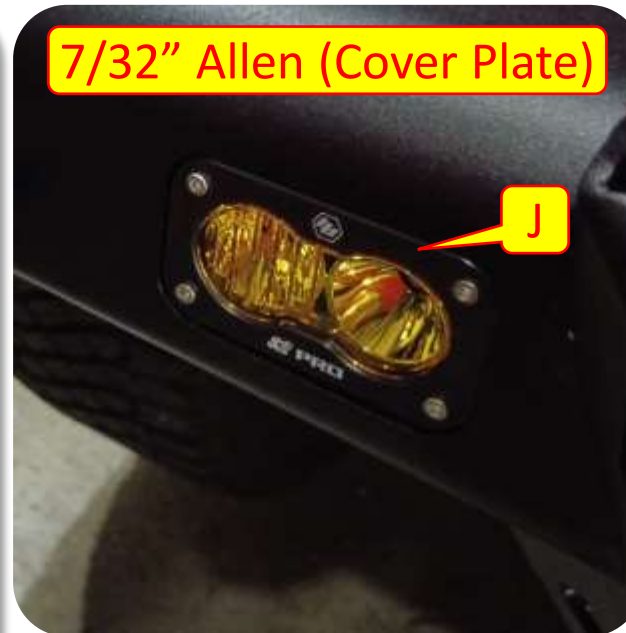




## Section 3: Installation Instructions

### Step 5: Install Body/Winch Mount

- J. Mount the Baja Designs S2 lights or the light fills in the body of the bumper using (BOM #11 and #12) from the hardware kit.
- K. Install winch to the bumper base per manufacturers instructions.
- L. Mount the bumper base on to the caps using (BOM #13) from the hardware kit to attach it to the caps, cap fills, and bash plate.





## Section 3: Installation Instructions

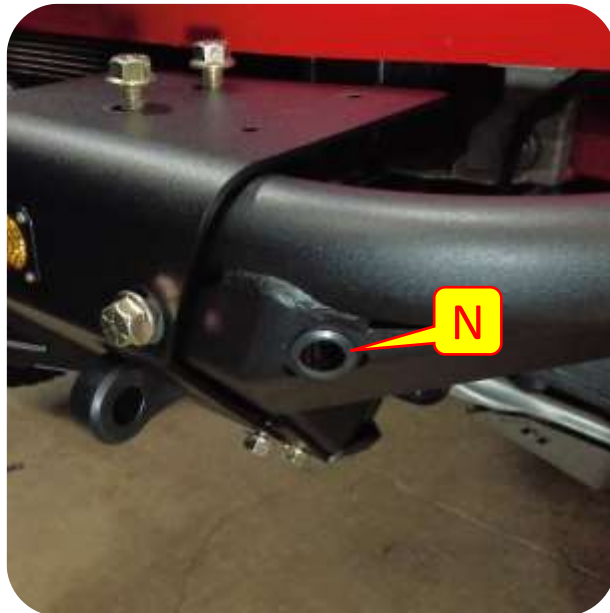
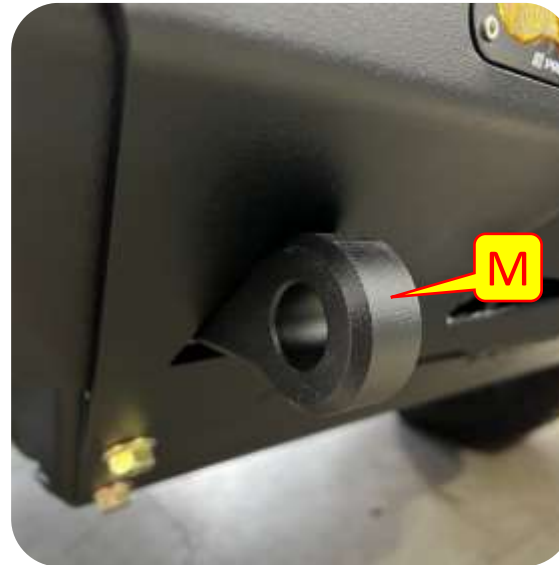
### Step 6: Wiring/Finalization

M. Install recovery points using supplied hardware, omitting the washers that come with the kit.

N. Install bumper sensor retainers (*BOM #2*) (*N1*); reconnect the sensor plug (*N2*) and run wiring to install the sensors into the retainers (*N3*).

**Note:** *The sensor mount only fits on the sensor in one position so rotate the mount to fit the sensor correctly as you install it.*

O. Tighten all hardware.



## Section 3: Installation Instructions

### Step 6: Wiring/Finalization

- P. Install (BOM #9) from the hardware kit on to the trim plates (BOM #5). Make sure you install the nuts, so you have a mirrored set to make the passenger side and drivers side trim plates.
- Q. Install (BOM #9) from the hardware kit on to the welded tabs on the tubes of the caps with the threaded “barrel” on the underside.
- R. Install the trim plates on to the caps with (BOM #10) from the hardware kit.

